

Public Meeting #2

Feasibility Study: Mystic River Path Connection to the Minuteman Bikeway

Wednesday
March 30, 2022



Zoom Meeting Guidelines



Everyone is muted by default. You will have the opportunity to virtually raise your hand and unmute during the Q&A.



If you're comfortable, activate your camera to better connect with other attendees. Feel free to use a digital background if you want.



If you have a question during the presentation, enter it in the chat. It will be addressed during the Q&A after the presentation.



This meeting is being recorded and will be posted to the Town's website.

Zoom 101

- Mute and unmute buttons are in the lower left corner of the Zoom screen
- Raise hand feature: Click on Reactions at the bottom of your screen and choose "Raise Hand". Don't forget to "Lower Hand" once you've been called on.
- If you are calling in by phone, *9 controls mute/unmute and *6 is to raise your hand.

Agenda

7:30 pm

Introduction

7:35 pm

Presentation

- Recap of project purpose and goals
- Update on project progress and timeline
- Summary of results from first public survey
- Concept Overview
- Next Steps

8 pm

Question & Answer

8:15 pm

Open Comment/Question Period

Project Purpose

From Alewife Brook Greenway to the Minuteman Bikeway, establish multiuse path:

- Preferred alignment
- Facility types
- Intersection safety improvements

Goals

- Provide an accessible route that contributes to a regional biking network by connecting the Minuteman Bikeway, Mystic River Paths, and Alewife Brook Greenway
- Strengthen the walking and biking network between Arlington, Medford, and Somerville by developing connections to perpendicular streets, sidewalks, and planned bike routes
- Increase safety and comfort for all users, particularly at intersections and rotaries
- Improve access to and views of the Mystic River and Mystic Lakes to enhance people's experience and draw them to these resources
- Reduce emissions by increasing bicycle mode share, and incorporate planning and design concepts that contribute to climate resiliency
- Preserve and enhance wetlands, trees canopy, and animal and plant habitat

Progress & Timeline

Task	Dec	Jan	Feb	Mar	Apr	May	Jun
Analyze existing conditions		S PM					
Draft alternatives, intersections, placemaking plan				S, FG PM			
Produce maintenance recommendations						S	
Develop preferred alternative concept							
Feasibility study & implementation matrix							S PM

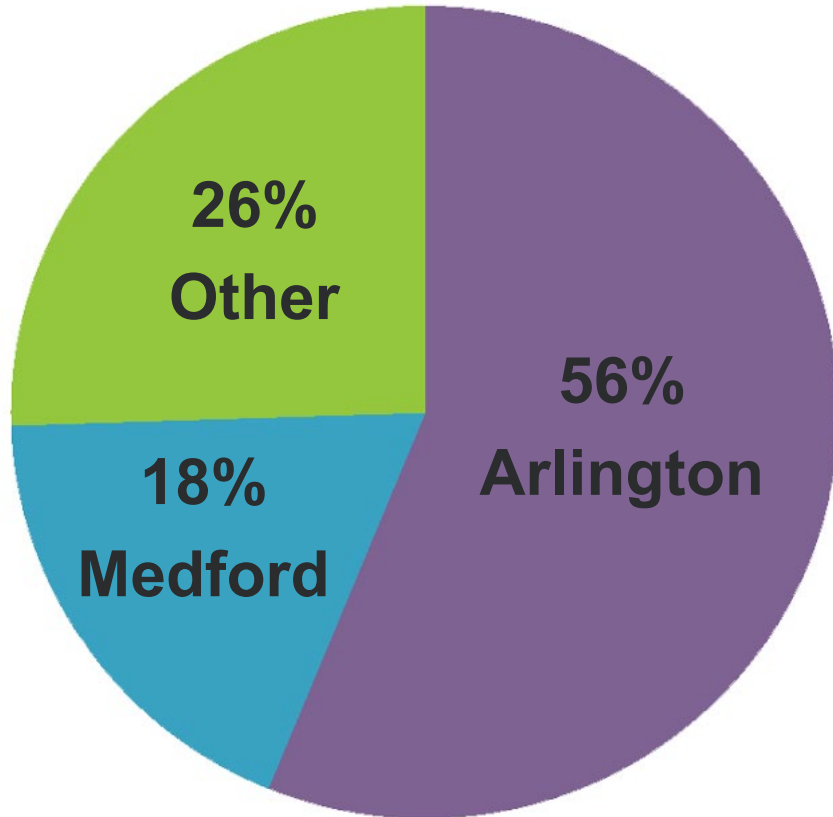
PM - Public meeting

S – Stakeholder meeting

FG – Focus group meeting

Results from 1st Public Survey & Meeting

Survey Response: Where You Live



520 completed survey responses

“Other” primarily includes:

- Cambridge
- Somerville
- Winchester

Priorities for Potential Path

	1 - Not important	2	3 - Somewhat important	4	5 - Most important	Responses
Safe crossings with slow vehicle speeds where I am visible to drivers Count Row %	2 0.4%	6 1.2%	36 7.2%	116 23.2%	340 68.0%	500
Feeling of security, knowing I am visible to other path users or people/homes near the path Count Row %	41 8.2%	65 13.0%	150 30.0%	132 26.4%	112 22.4%	500
Crossings/connections from neighborhood streets Count Row %	13 2.6%	52 10.5%	170 34.4%	150 30.4%	109 22.1%	494
Path or bike lane connections over bridges between Arlington and Medford Count Row %	12 2.4%	26 5.2%	112 22.5%	141 28.4%	206 41.4%	497

Key Safety Concerns

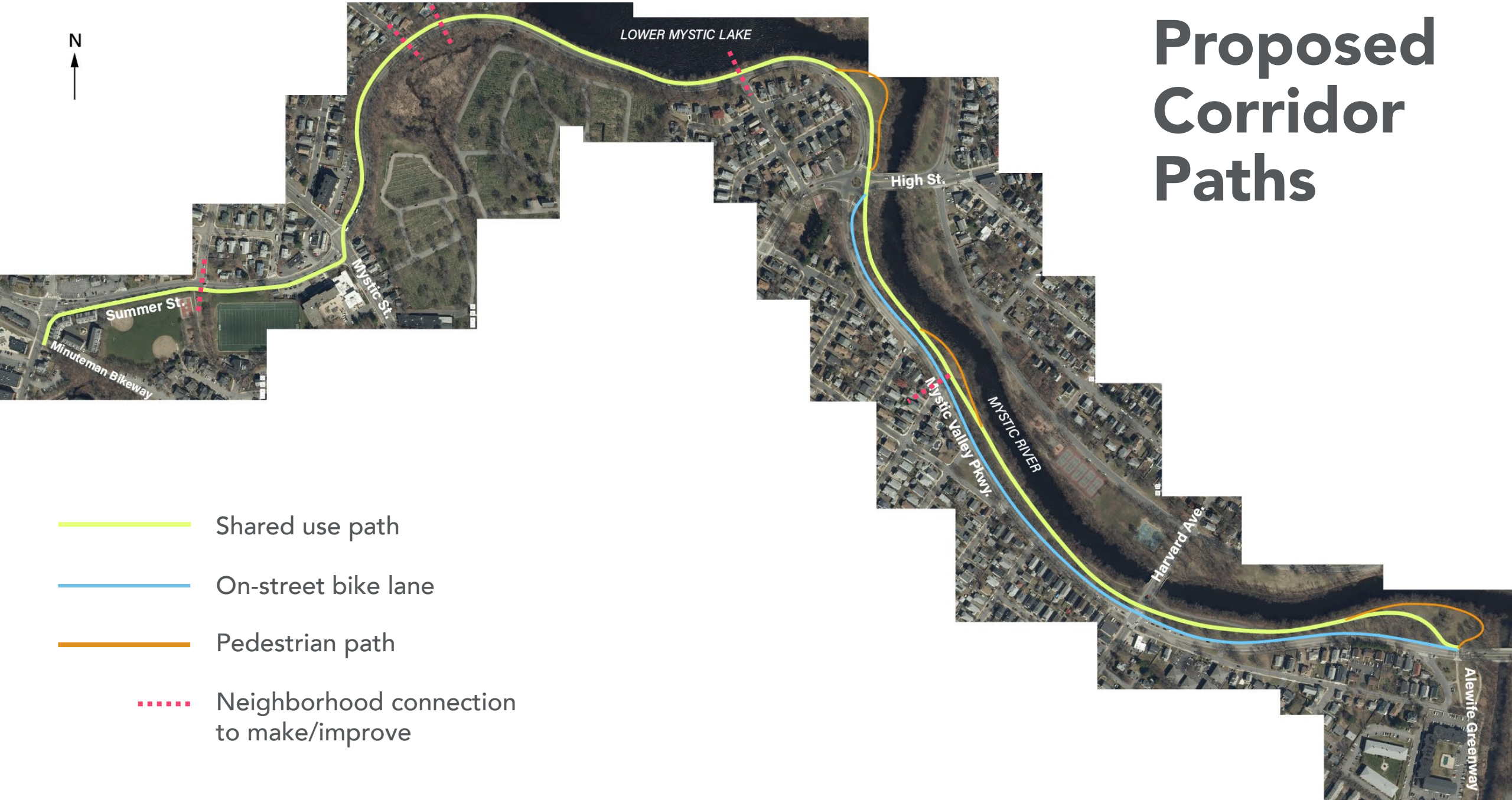
- 230+ responses cited the rotaries and lack of safe crossings. All intersections mentioned multiple times
- Lack of useable shoulder on Summer Street or the tight and curved portion of the parkway south of Lower Mystic Lake
- Poor pavement conditions, whether in the roadway or sidewalk

Key Takeaways

- Need for connectivity with Medford, surrounding paths, and parks
- Recognize users of all ages and abilities, including different types of cyclists, in design
- Many people want separation between cyclists and pedestrians, and commuting cyclists would like separate facilities on-road for faster use
- Several people expressed concern about a path through Buzzell Field due to current field use and configuration

Overview of Concepts

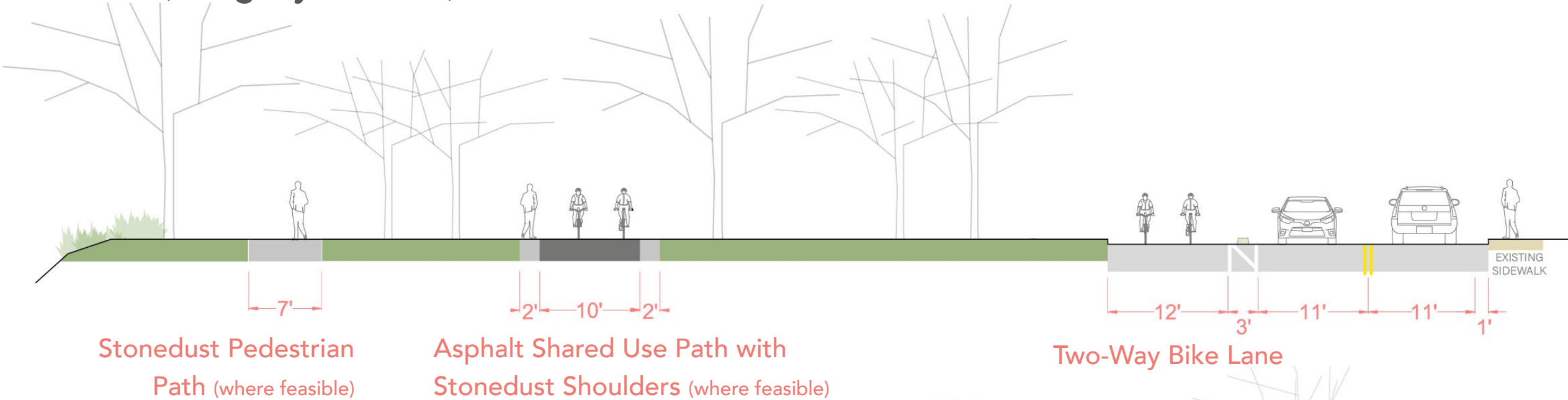
Proposed Corridor Paths



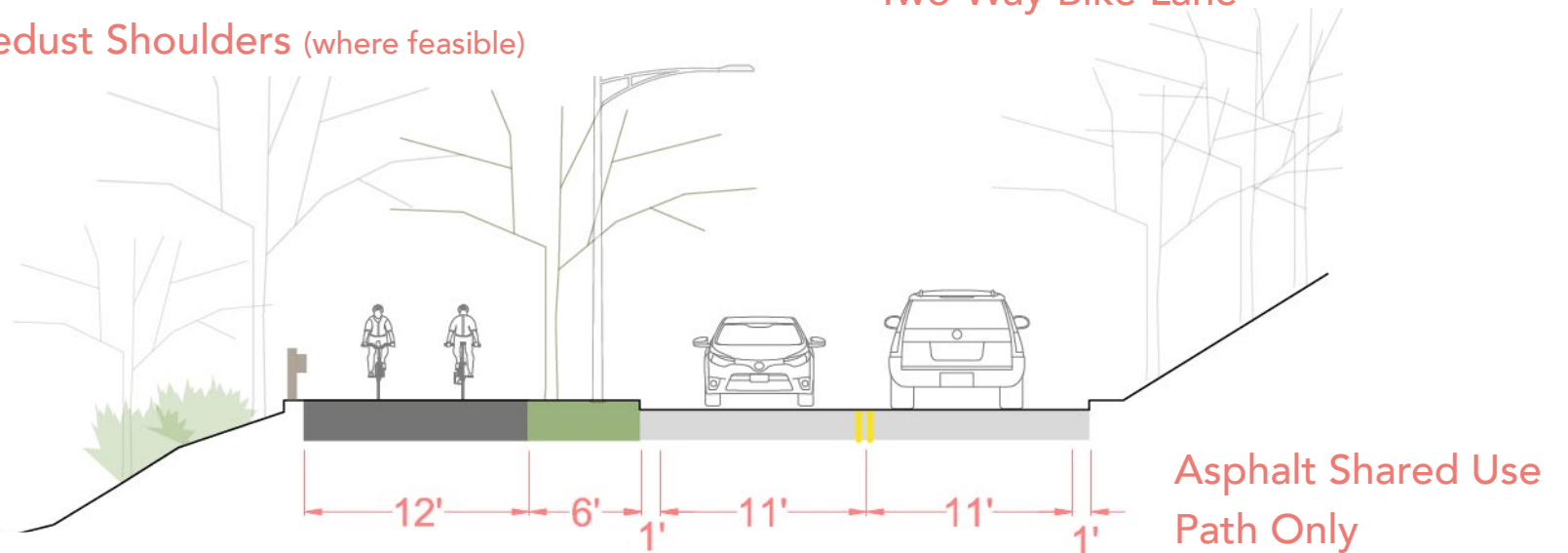
Typical Cross Sections

*Widths may change with final design

Wide (along Mystic River)



Constrained (along Lower Mystic Lake)



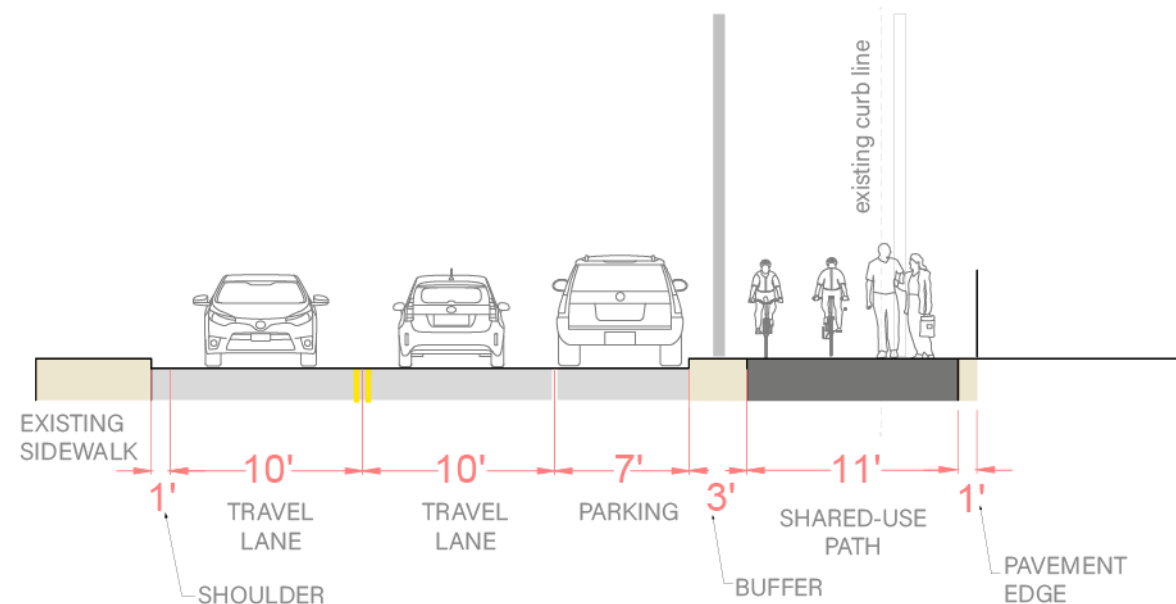
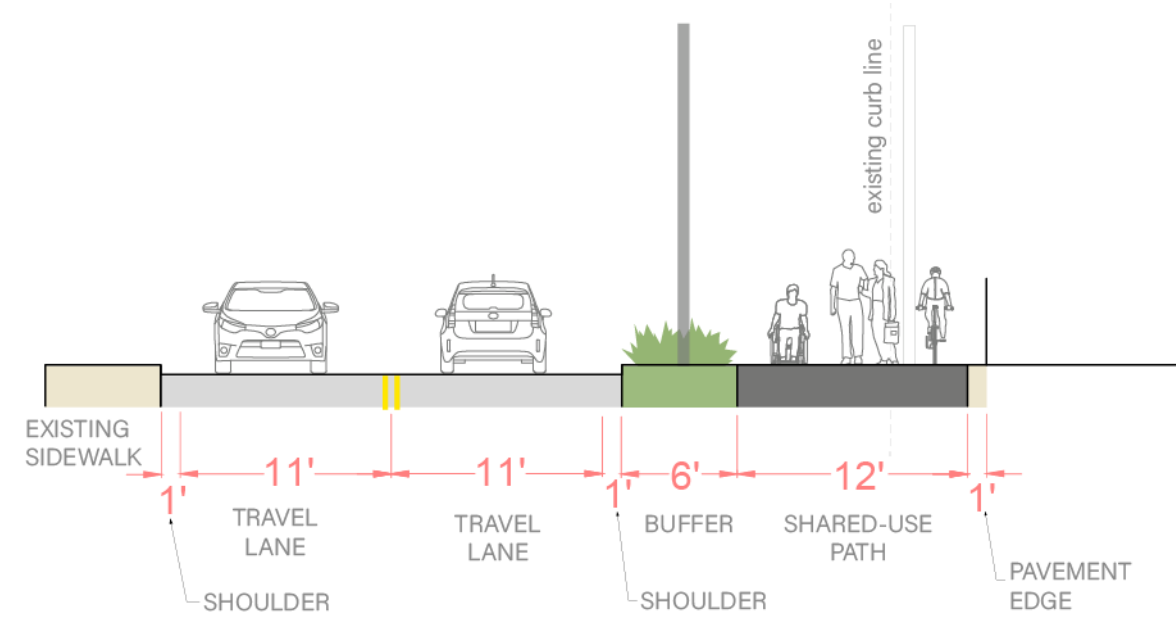
Summer Street

Alternative A

- Slightly wider path and typical travel lane width
- Wider buffer provides more opportunity for lawn / low planting / sense of integration into park space
- Requires removal of all parking on Summer Street

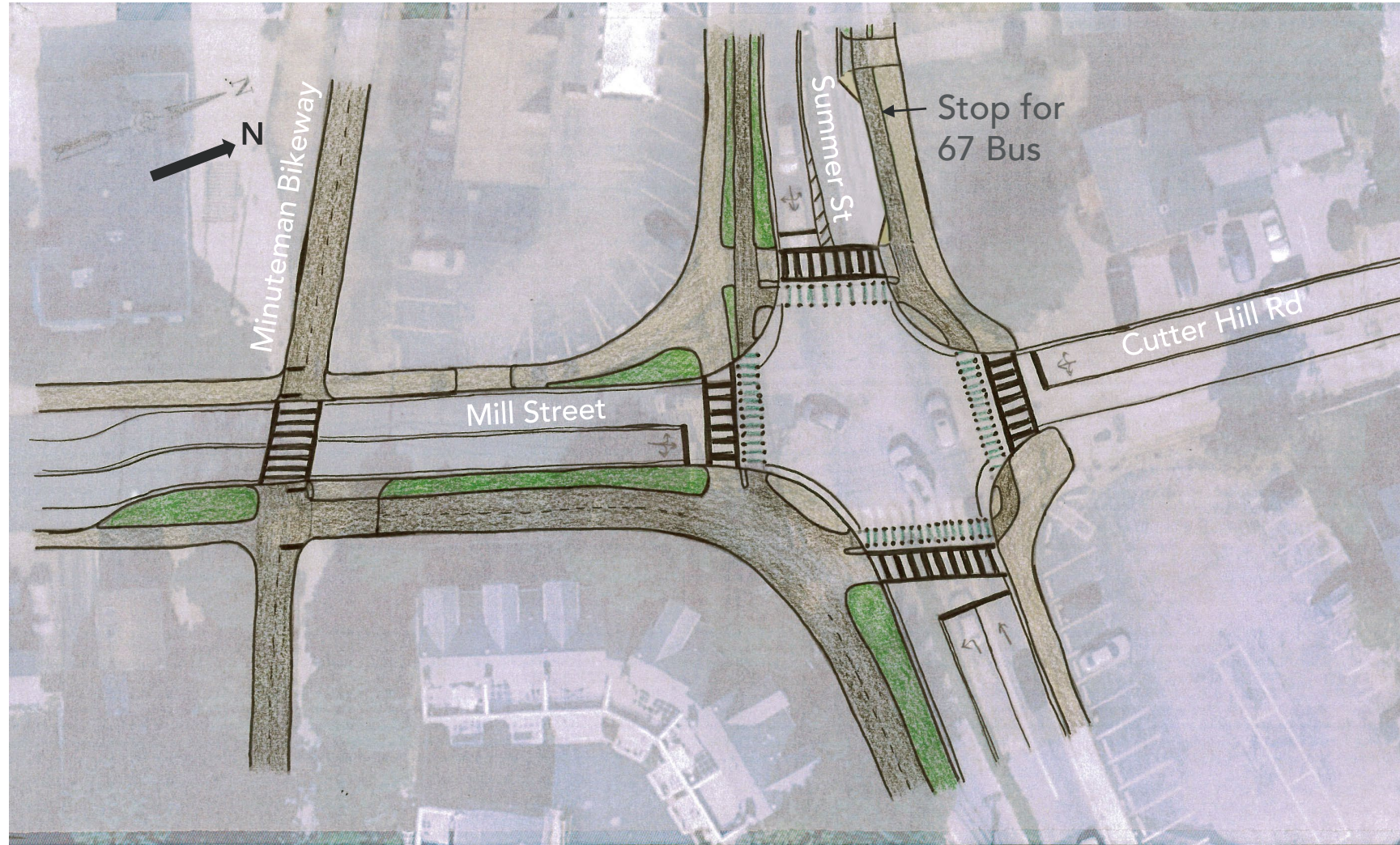
Alternative B

- Narrower roadway, path, and path buffer
- Retains parking on south side of Summer Street
- All hard-paved



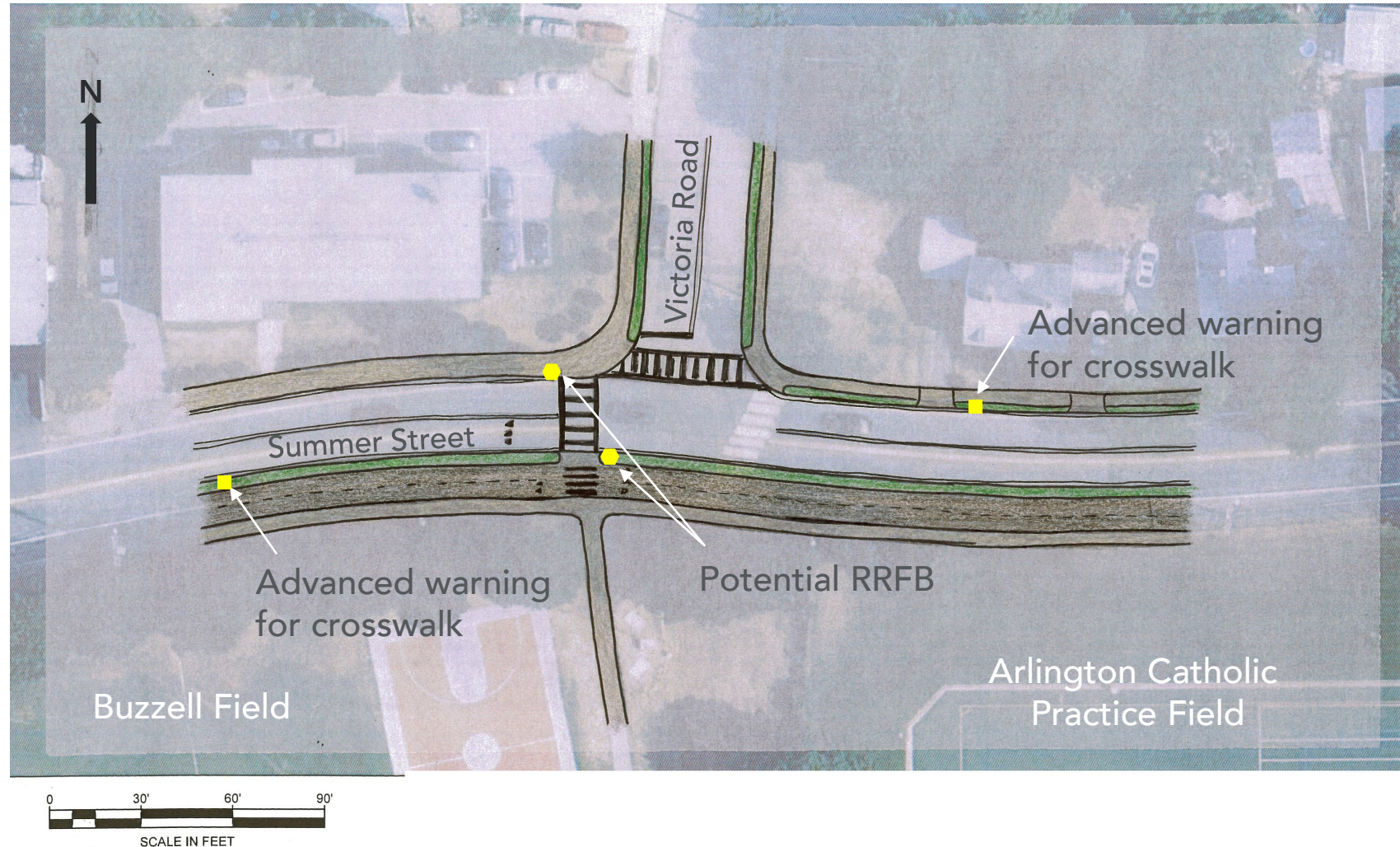
Mill Street and Summer Street

- Medians and right turn lanes removed to tighten intersection, shorten crossings, and slow vehicles
- Intersection treated as a gateway with proposed bike lanes on west side
- Protected intersection for people on bikes



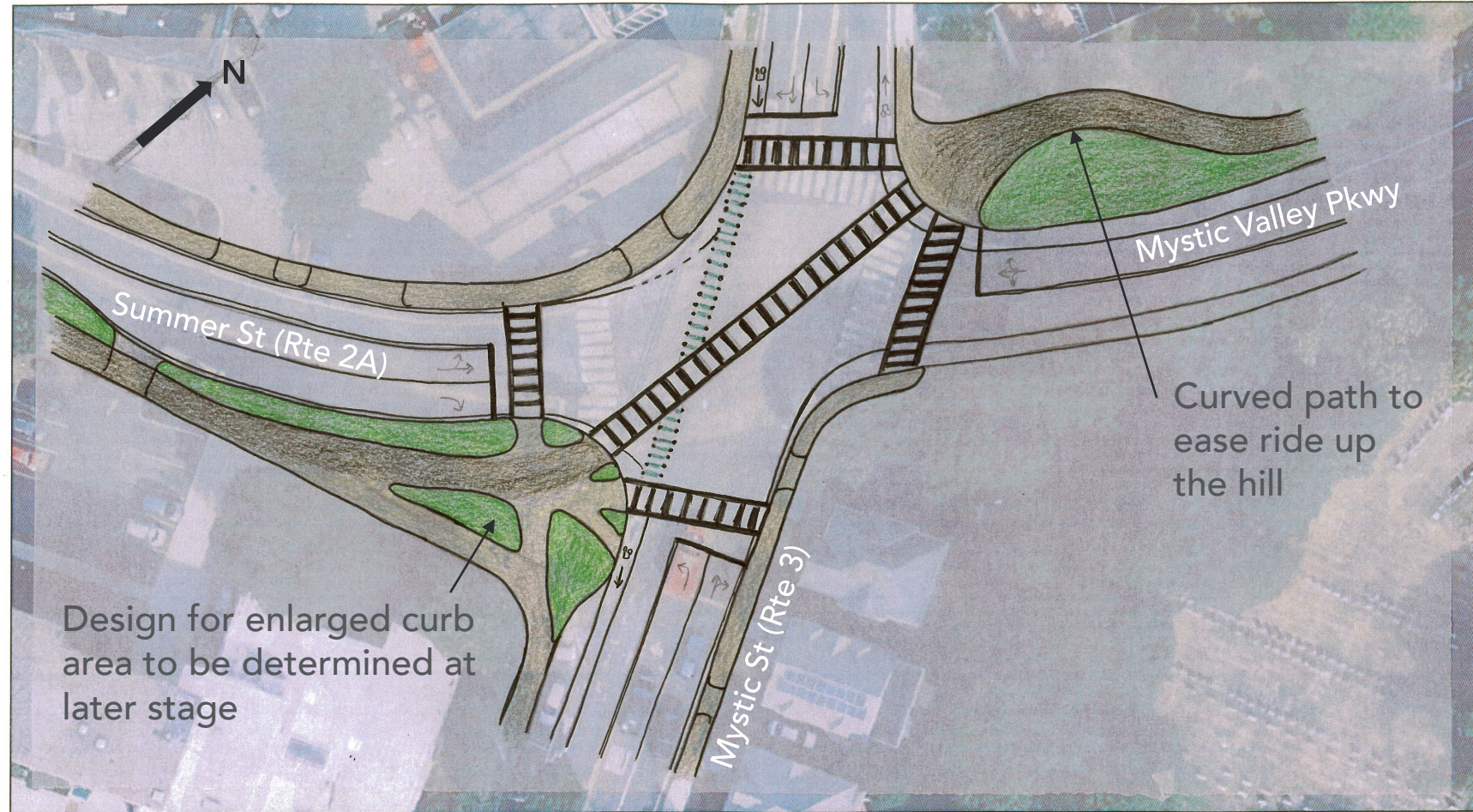
Typical Neighborhood Connection: Summer Street at Victoria Road

- Relocate crossing to improve sightlines and connection to Buzzell Field
- Pavement markings and signage enhance pedestrian visibility in crosswalk
- Rectangular Rapid Flashing Beacon (RRFB) may be needed due to sightlines on curve



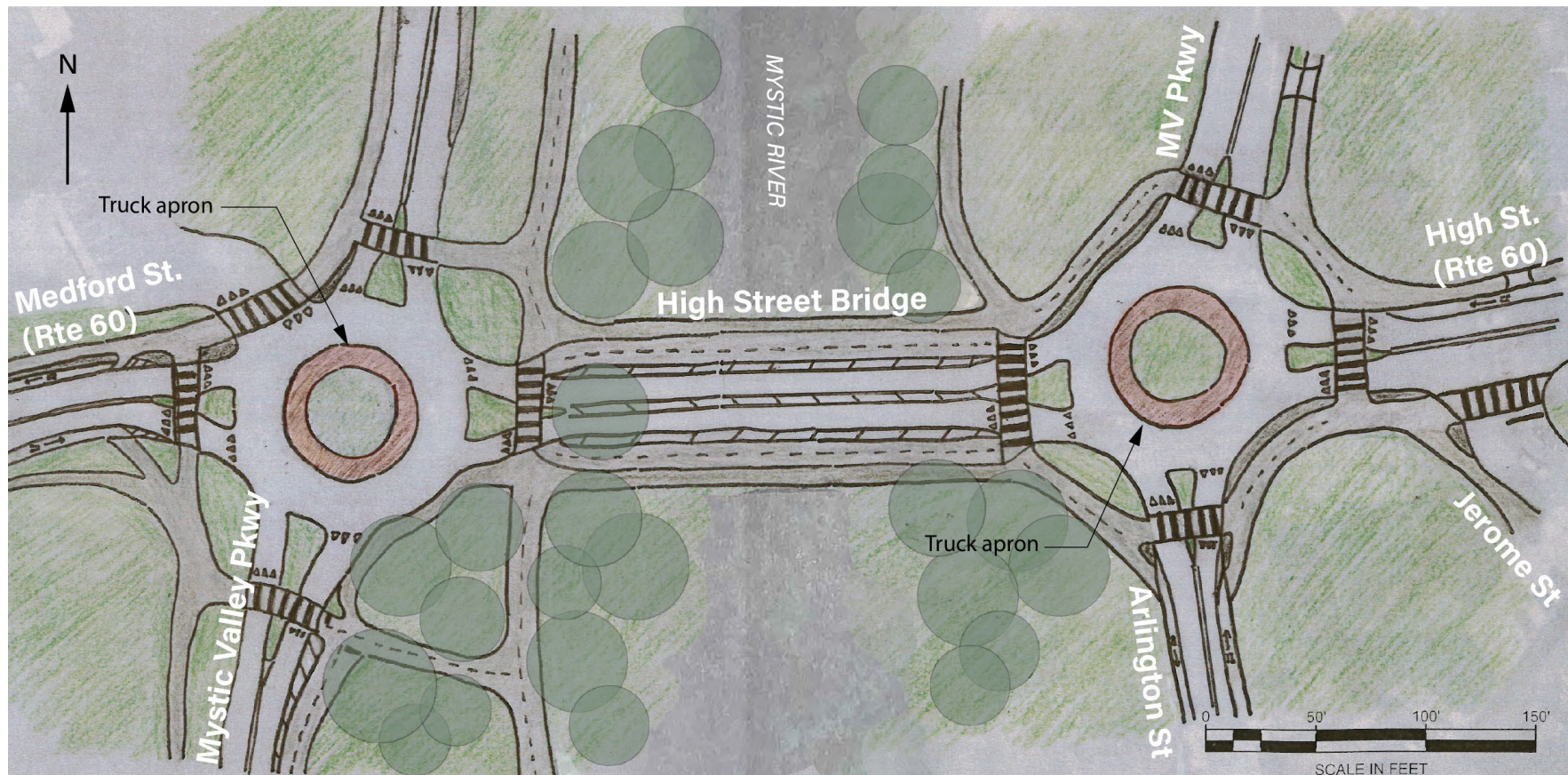
Summer Street/Mystic Street/ Mystic Valley Parkway

- Remove channelized right turn lane on Summer St to add space for path and sidewalk users and shorten crossings to north and east
- Dedicated signal phase for bike/ped crossings
- Diagonal crossing to follow desire line for path and prevent potential conflict with gas station



Medford St / High St Roundabouts

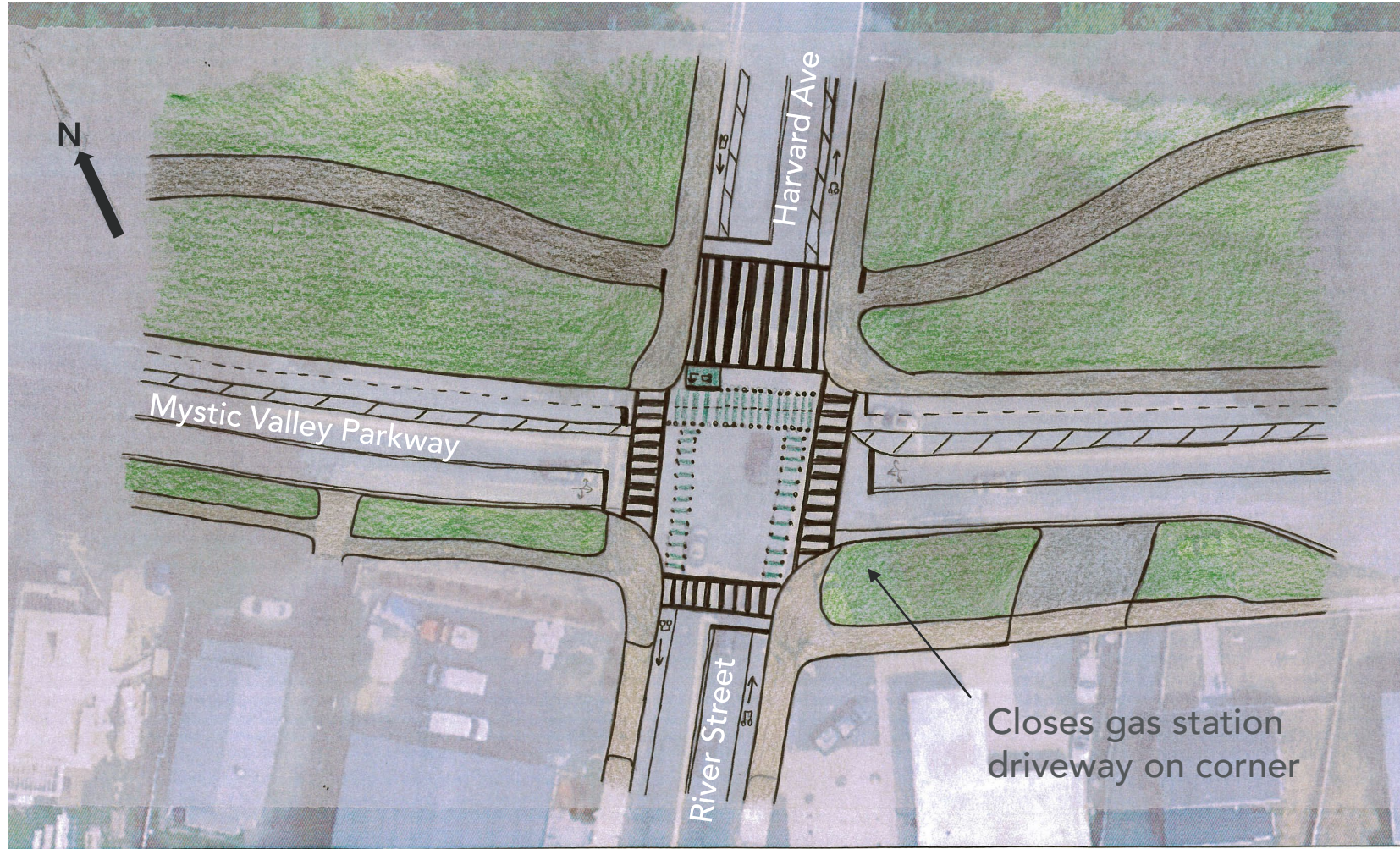
- Tightens roadway lanes to slow vehicles
- Two-way bike lanes on both sides of bridge
- Crossings placed so cars entering roundabouts are not in conflict with bike/ped crossings
- Signage to clarify movements



River Street

- Wide crosswalk serves both path and existing sidewalk
- Two-stage left-turn box for bikes
- Connect to proposed bike lanes on River St/ Harvard Ave

*Report to recommend connection to paths on Medford side



Placemaking Opportunities



Wayside
Map & interpretive signage, seating, bike rack, bike repair, etc



Scenic Overlook



Nature Opportunity Area
Native planting, rain garden, orchard, etc



Nature Opportunity Areas



On curve north
of rotaries



Across from
Palmer Street

Near Alewife Brook Greenway



Next Steps

- Maintenance recommendations
- Preferred alternative development in April / May
- Implementation recommendations
- Next public meeting to review final report in June

Please take the survey!

<https://tinyurl.com/MystictoBikewaySurvey2>

Question + Answer (15 min)

Please stick to questions only at this time. We can call on the same people again during the comment period.

Open Comment / Question Period (45 min)

All comments and additional
questions are welcome.