

Public Meeting #1

Feasibility Study: Mystic River Path Connection to the Minuteman Bikeway

Wednesday
January 26, 2022



Project Funding & Team

- Funded through a grant of \$80,000 from the MassTrails program and \$10,000 from the Lawrence & Lillian Solomon Foundation
- **Arlington Department of Planning and Community Development**
- **Mystic River Watershed Association (MyRWA)**
- Toole Design
- City of Medford
- MA Department of Transportation (MassDOT)
- MA Department of Conservation and Recreation (DCR)
- Metropolitan Area Planning Council (MAPC)



Zoom Meeting Guidelines



Everyone is muted by default. You will have the opportunity to virtually raise your hand and unmute during the Q&A and may be unmuted during breakout sessions.



If you're comfortable, activate your camera to better connect with other attendees. Feel free to use a digital background if you want.



If you have a question during a presentation, enter it in the chat. There will be Q&A after the presentation, and the chat will be available during breakout groups.



The main room of this meeting is being recorded and will be posted to the Town's website.

Zoom 101

- Mute and unmute buttons are in the lower left corner of the Zoom screen
- Raise hand feature: Click on Reactions at the bottom of your screen and choose "Raise Hand". Don't forget to "Lower Hand" once you've been called on.
- If you are calling in by phone, *9 controls mute/unmute and *6 is to raise your hand.

Agenda

- Introductions
- Presentation
 - Overview of project scope and timeline
 - Draft Goals
 - Existing conditions observations and considerations
 - Next Steps
- Q+A
- Breakout Groups

Scope & Timeline

Task	Dec	Jan	Feb	Mar	Apr	May	Jun
Analyze existing conditions		PM					
Draft alternatives, intersections, placemaking plan				PM			
Produce maintenance recommendations							
Develop preferred alternative concept							
Feasibility study & implementation matrix							PM


PM - Public meeting

Public Engagement: Communication

Ways you will hear from us:

- Social media
- Project page updates
- Email list from this meeting

LEND YOUR THOUGHTS
on a feasibility study to establish
establish a walking and biking connector
along the Mystic Valley Parkway from
Alewife Brook Greenway to the
Minuteman Bikeway.



**FIRST VIRTUAL
PUBLIC MEETING**
January 26
7:30-9 pm

Please register here:
tinyurl.com/MystictoBikewayMeeting1

This project extends through June 2022.



Postcards to neighbors for kick-off

Feedback Format

- Miro meetings
- Survey

<https://tinyurl.com/MystictoBikewaySurvey1>

Alternative 3
Metrics are noted on a scale of 1 to 5, where 5 is the most desirable outcome.

Please rank each alternative, where 1 is your most preferred alternative and 4 is your least preferred alternative. Each ranking may only be selected once.

	1	2	3	4
Alternative 1A: Four vehicle travel lanes with a mix of expanded and reduced sidewalks, angled parking, and a mix of separated and shared bike lanes	<input type="radio"/>	<input type="radio"/>	<input type="radio"/>	<input type="radio"/>
Alternative 1B: Four vehicle travel lanes with expanded sidewalks, angled parking, and no bike lanes	<input type="radio"/>	<input type="radio"/>	<input type="radio"/>	<input type="radio"/>
Alternative 2: Four vehicle travel lanes with expanded sidewalks, parallel parking, and a mix of separated and shared bike lanes	<input type="radio"/>	<input type="radio"/>	<input type="radio"/>	<input type="radio"/>
Alternative 3: Three vehicle travel lanes with expanded sidewalks, separated bike lanes, and angled parking	<input type="radio"/>	<input type="radio"/>	<input type="radio"/>	<input type="radio"/>

Why did you choose your most preferred alternative?

Why did you choose your least preferred alternative?

[Back](#) [Submit](#)

67%

Draft Goals

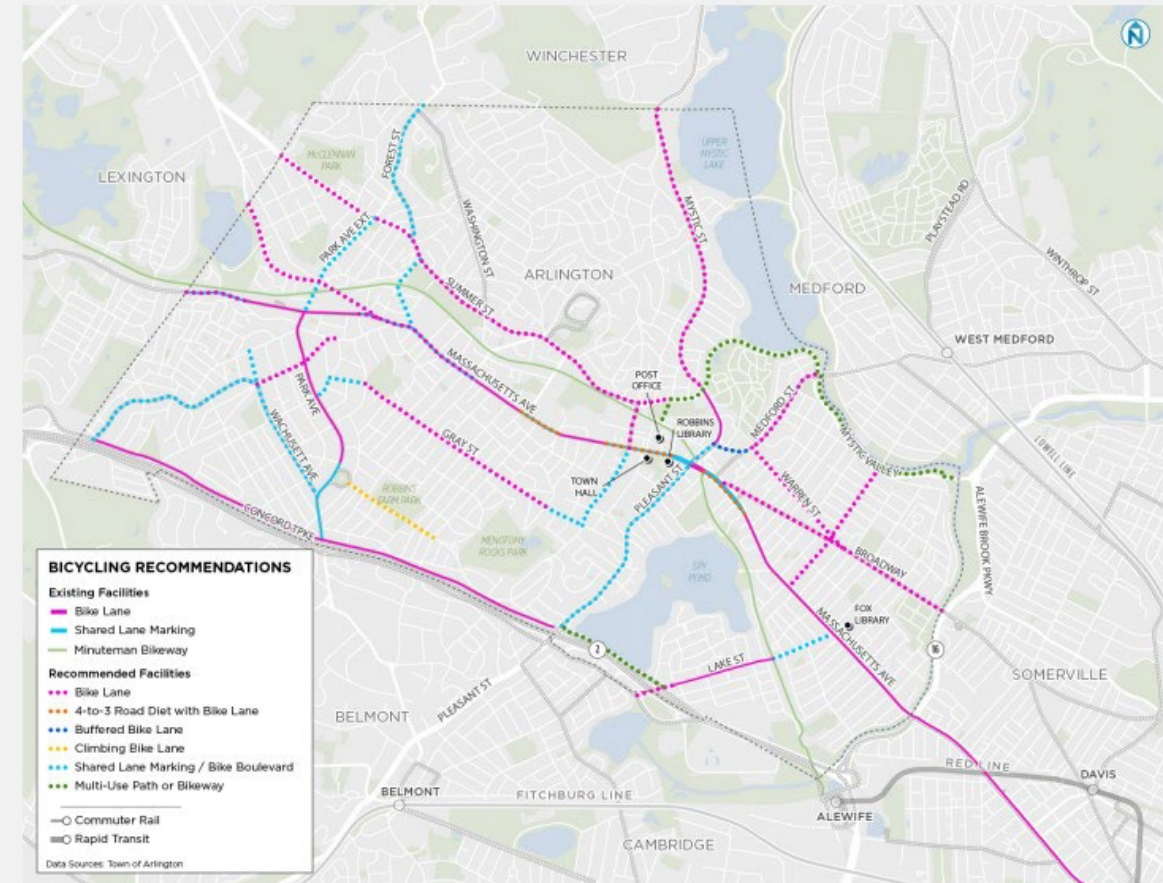
- Provide an accessible route that contributes to a regional biking network by connecting the Minuteman Bikeway, Mystic River Paths, and Alewife Brook Greenway
- Strengthen the walking and biking network between Arlington, Medford, and Somerville by developing connections to perpendicular streets, sidewalks, and planned bike routes
- Increase safety and comfort for all users, particularly at intersections and rotaries
- Improve access to and views of the Mystic River and Mystic Lakes to enhance people's experience and draw them to these resources
- Reduce emissions by increasing bicycle mode share, and incorporate planning and design concepts that contribute to climate resiliency
- Preserve and enhance wetlands, trees canopy, and animal and plant habitat

Existing Conditions

Plans, Policies, & Data Review

- Traffic counts collected for project
- Geospatial data
- Connect Arlington Sustainable Transportation Plan
- Open Space and Recreation Plan
- Mill Brook Corridor Report
- DCR Mystic River Master Plan
- DCR Parkways Master Plan
- Arlington Master Plan: Your Town, Your Future
- Zoning Bylaw and Map
- Arts and Culture Action Plan
- Town Bylaws
- Net Zero Action Plan
- MAPC's Landlines Trail Planning
- Mystic River Watershed Association: Mystic Greenways Initiative

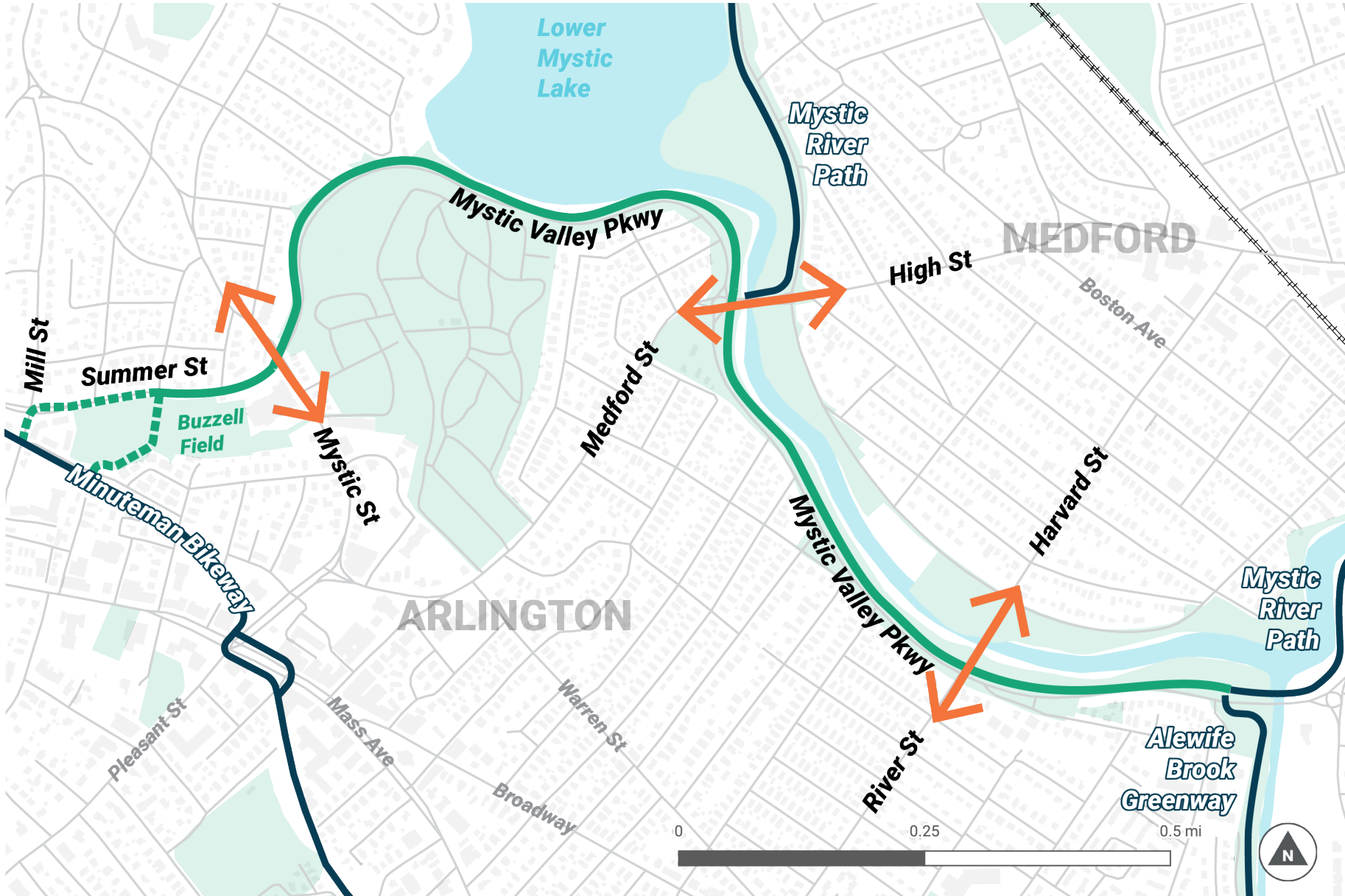
RECOMMENDED BICYCLE NETWORK



Connections to Make

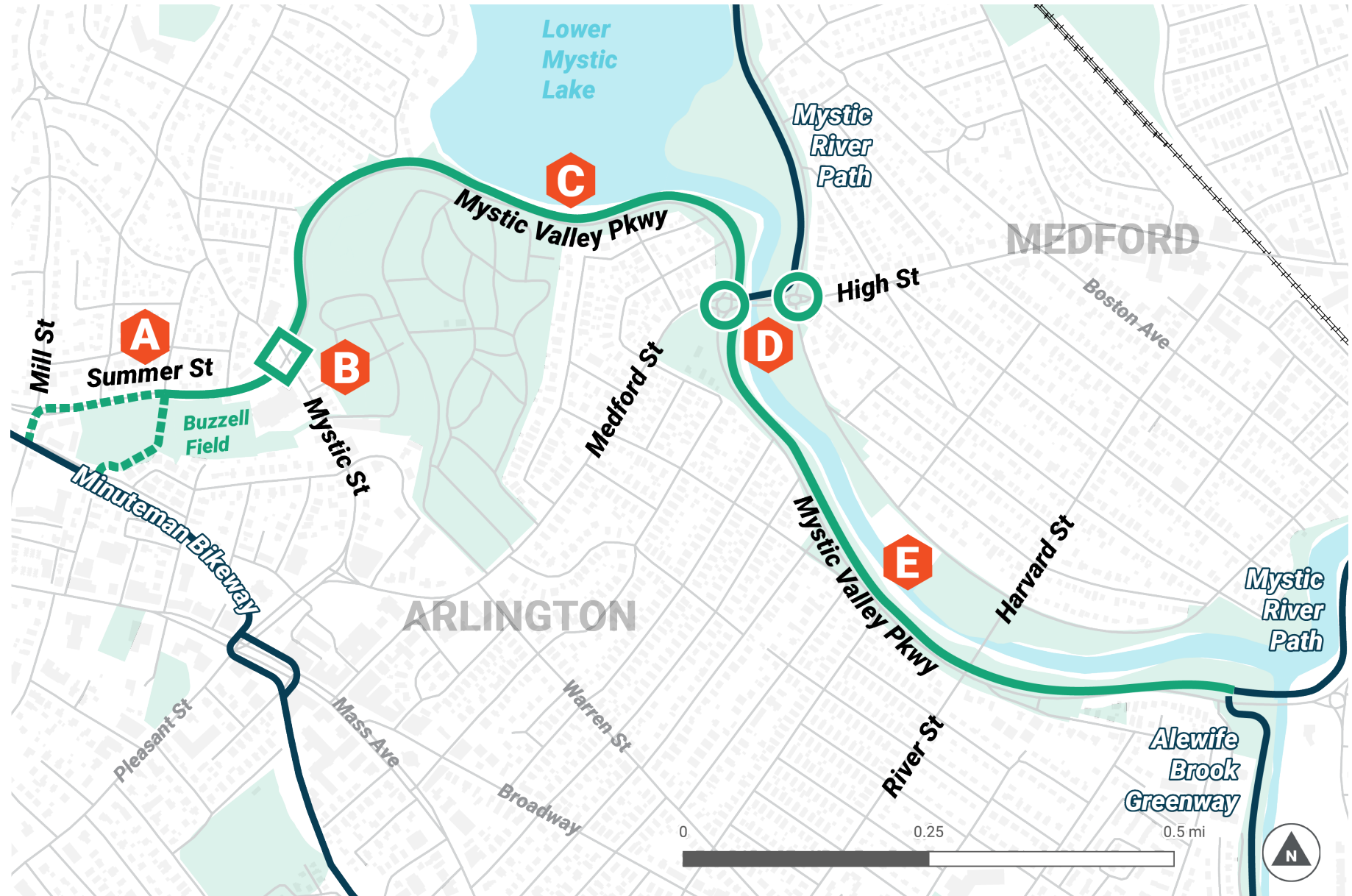


What are the neighborhood connections?



Character Zones

- A. Summer St/Mill St/Buzzell Field
- B. Mystic St at Summer St
- C. Lower Mystic Lake
- D. The Rotaries
- E. East End

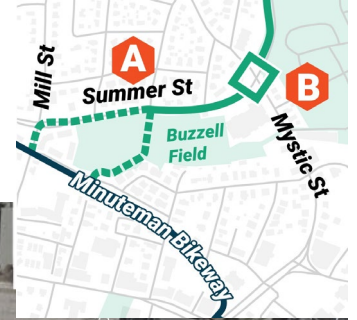


A. Summer St / Mill St / Buzzzell Field

Design Considerations

- **Summer St:** ~38' curb to curb, informal parking
- **Mill St:** 36' curb to curb
- **Buzzzell Field:** existing path adjacent to recreational uses

Do we connect through Buzzzell Field or Mill St / Summer St intersection?





Residential driveways & cross streets
north side



Squeeze between trees and ball field



Parking in restricted areas



Mill St intersection has medians,
turn lanes, wide receiving lanes

B. Summer St / Mystic St / Mystic Valley Pkwy Intersection



Design Considerations

- Long, offset intersection with wide crossings (60')
- Recommend to remove slip lane
- Parkway travels down ~5-7% grade. Opportunity with DCR property on NE corner to mellow grade transition
- Bike lane south of intersection

- What is your experience through this intersection?
- What is the experience of someone riding along Mystic St?



Intersection is offset and long, particularly with slip lane



Gas station entry center of intersection



Dunkin' a high use driveway

C. Lower Mystic Lake



Design Considerations

- .7 miles of woodland character at base of Lower Mystic Lake
 - Opportunity for overlook
 - Roadway 30-40' wide
 - Guard rail to curb face 10-12'
 - Light poles in grass buffer
- Are there neighborhood connections you think would be beneficial here?





Culvert conditions and capacity limits a consideration

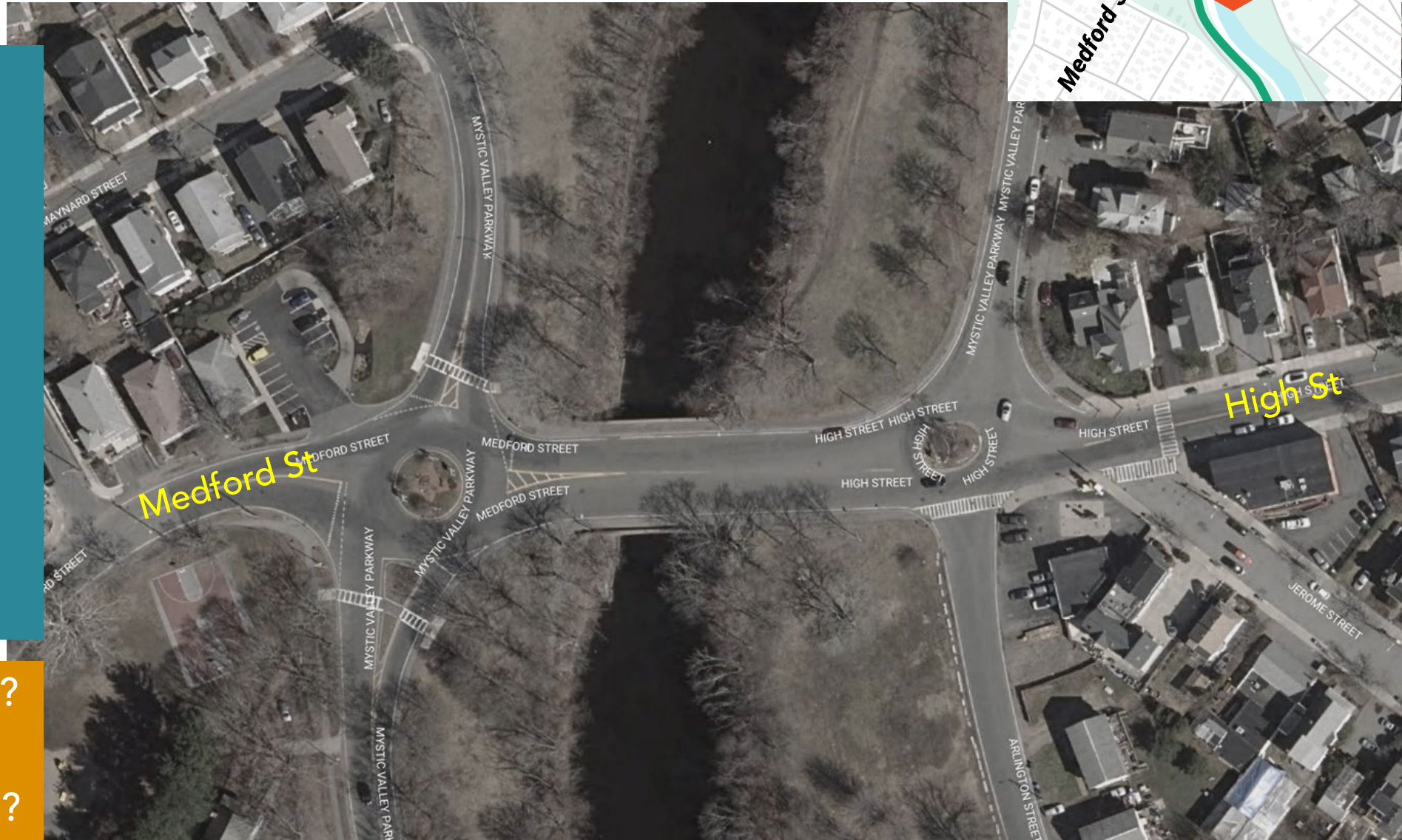


Opportunity for overlook
at Lower Mystic Lake



Potential crossing to Hayes Street
but speeds fast and sightlines
somewhat limited

D. Rotaries



- ## Design Considerations
- Excess pavement and lack of deflection encourage higher speeds
 - No existing crossing on path sides
 - Path connections to make on both sides of bridge
 - 60' roadway width on bridge
 - Bus routes 85, 90

- What is your experience?
- Where are you trying to connect to through here?



- Excess pavement and little deflection at rotaries
- Existing lack of crossings



Curb-to-curb 60' pavement width on bridge

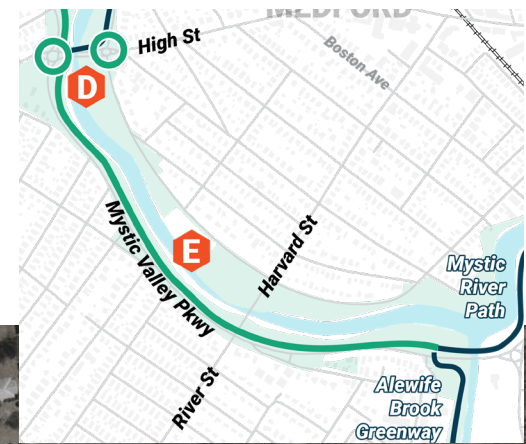
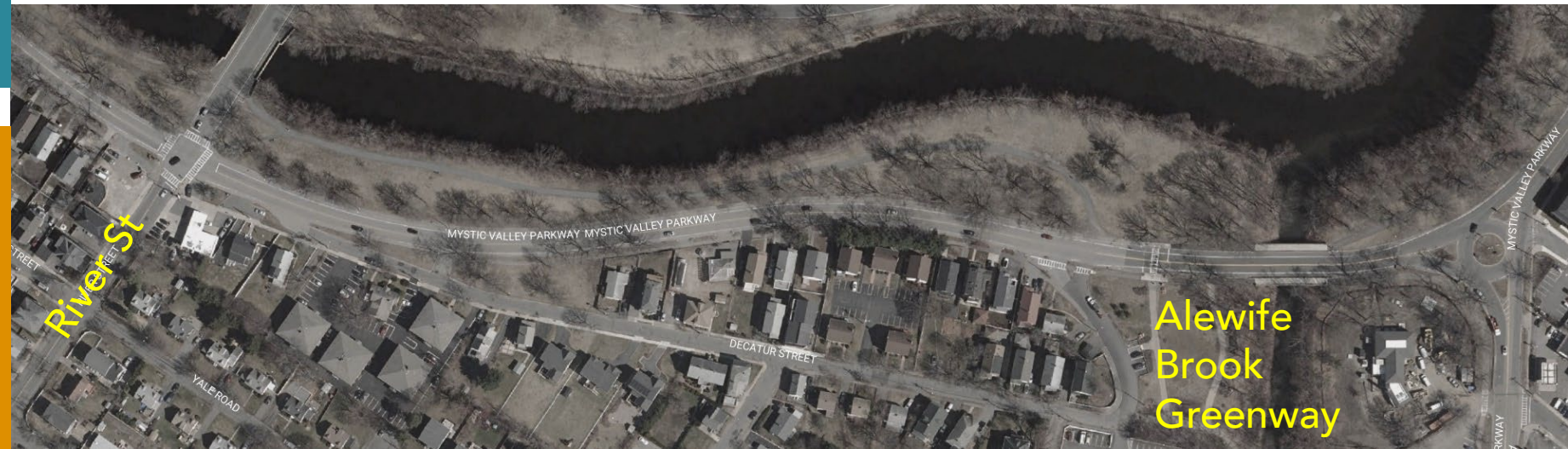
Trees surround unpaved paths at bridge. Consideration for alignment



E. East End

Design Considerations

- Parkway & path grade separated south of rotary
 - Woodland + trees on lawn
 - Connection across River St bridge
-
- What are your thoughts on the existing path along the river?
 - How do you experience River St intersection?





River St Intersection



Most constrained area with slight slope



Crossing areas at top of slope



Opportunity to cross at intersection, bridge, or both at River St

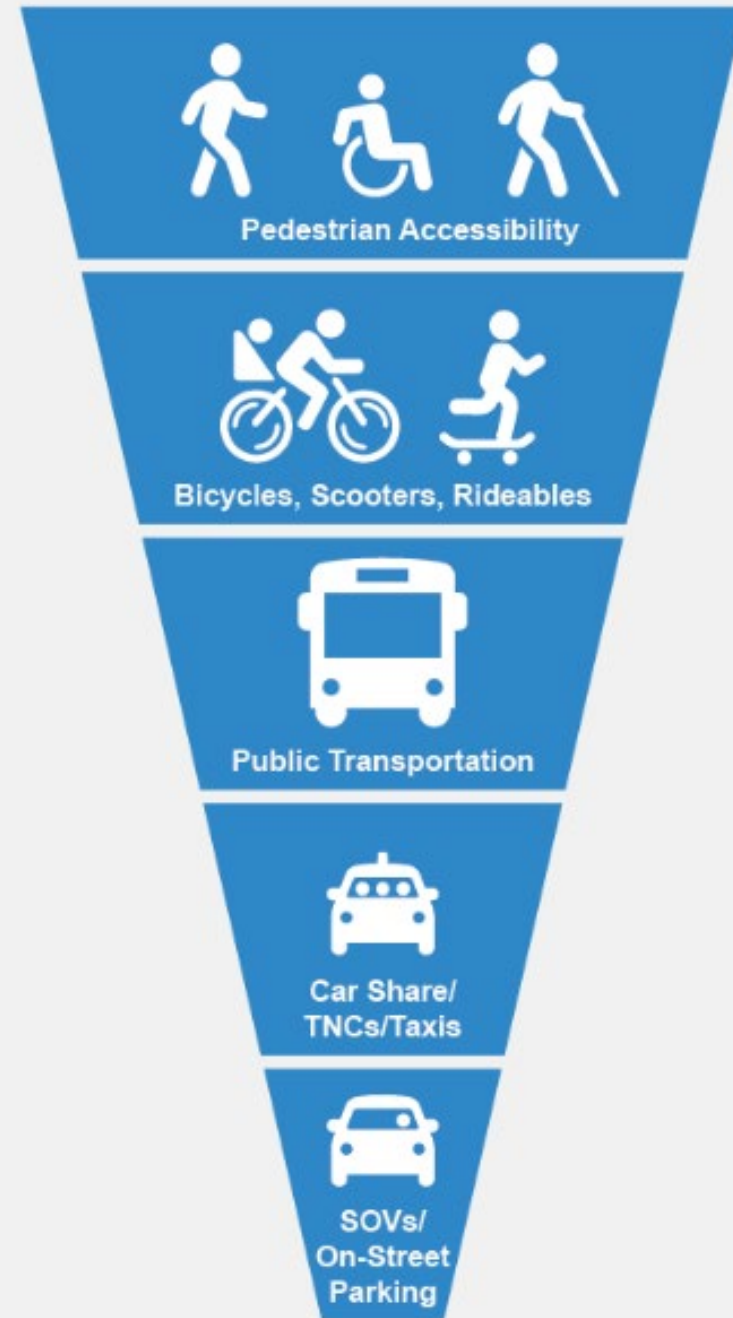


Need to align with Alewife Brook Greenway

Connect Arlington

Plan visions and targets

- “Pedestrian first, walk-friendly environment”
- “Reduce percentage of commuters driving alone, increase share of commuters bicycling and taking public transit”



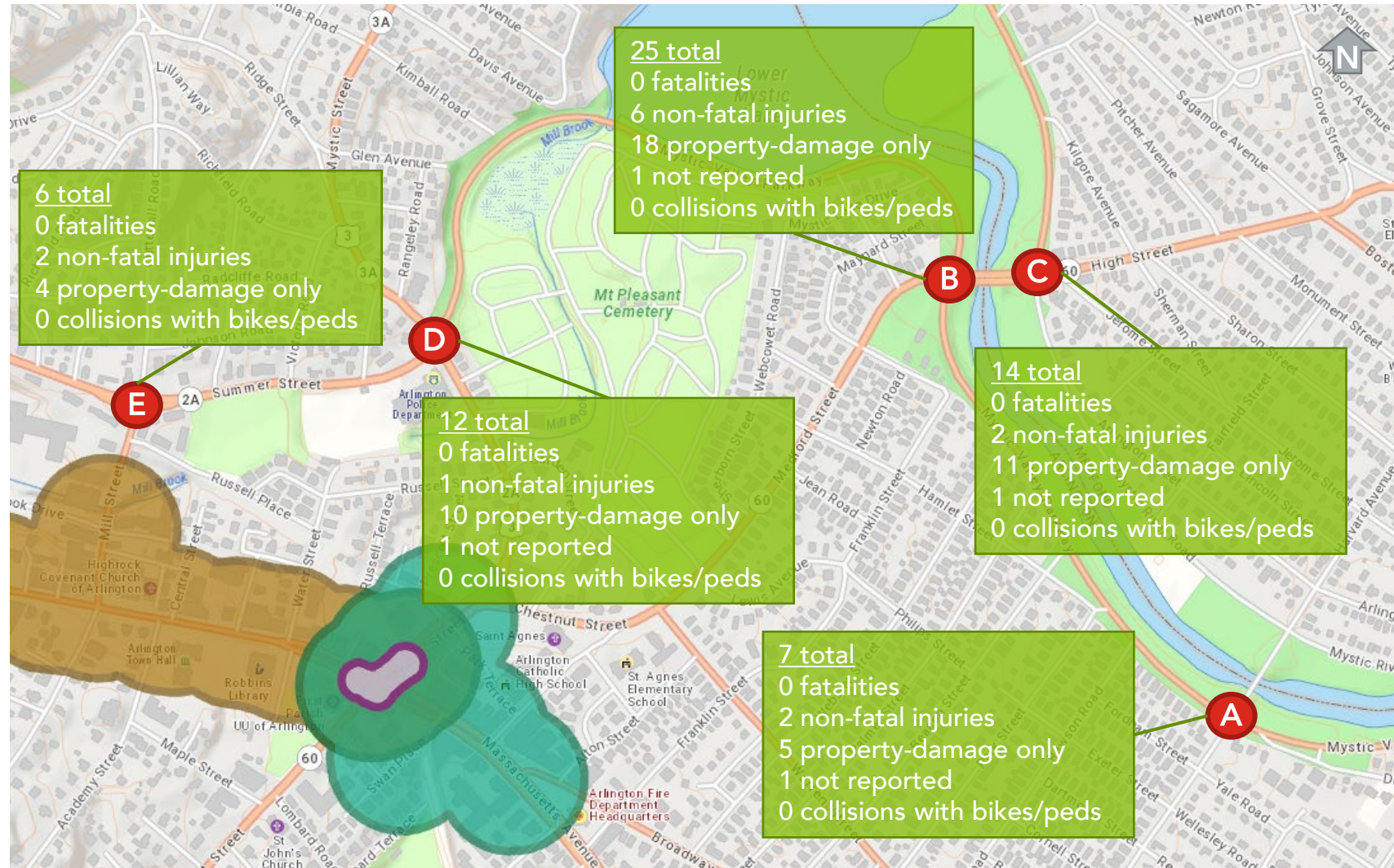
Safety Improvement Priorities

- Several project intersections identified as safety priorities in *Connect Arlington*



Preliminary Crash Review

- Crashes from MassDOT Impact portal between January 2017 and January 2020
- No intersection appears in Highway Safety Improvement Program (HSIP) crash cluster



Intersection Analysis

- Collected traffic data to understand current use patterns and intersection capacity
- Will make recommendations for geometric and operations changes as part of alternatives
- Things to achieve:
 - Slow speeds
 - Visibility
 - Path user priority
 - Path legibility / ease of navigation

Next Steps

- Existing conditions memo due February
- Alternatives development in February & March
- Next public meeting to review alternatives in late March

Please take the survey!

<https://tinyurl.com/MystictoBikewaySurvey1>

Questions?

Breakout Room Discussion Topics

- **Goals**
- **Safety concerns:** experience of intersections and existing paths & thoughts for improvements
- **Opportunities:** potential amenities, placemaking, and neighborhood connections