



Mystic Messenger

A Publication of the Mystic River Watershed Association
Summer 2004

In This Issue

- Wetlands Protection Act (p. 1)
- Letter from the Executive Director (p. 2)
- Brooks Estate Wetlands Project Moves Forward (p. 3)
- MyRWA's Heritage (p. 4)
- Profiles of Local Groups: Woburn Residents' Environmental Network (WREN) (p. 5)
- Spotlight on Volunteers: Julia Osgood (p. 6)
- Members Make A Difference (p. 6)
- Mystic Herring Run Festival Photos (p. 7)
- Citizen Schools' Water Quality Monitoring Apprenticeship (p. 8)
- Policy Committee Tours Cambridge Water Supply (p. 8)
- Get Connected! (p. 9)
- Thanks to Our Supporters! (p. 9)
- Knotweed Projects (p. 10)
- Activities in the Watershed (p. 10)
- Membership Information (p. 11)
- Mystic Meanders—Canoe the Mystic this Summer (p. 12)
- MyRWA's Annual Volunteer Appreciation Picnic (p. 12)

A Threatened Rollback on Water Quality Protections

Nancy Hammett

The Wetlands Protection Act and the Rivers Protection Act are critical pieces of the state's regulatory program for protecting water quality. These are the rules that protect our waters from the pollution that comes from development. The Mass. Department of Environmental Protection (DEP) is considering changes that will dangerously weaken the regulations. While MyRWA supports some of the proposed changes, the proposal as a whole would open the door to unregulated development very close to water.

First, some background about the state's wetlands protection regulations. The wetlands protection act and regulations define protected "resource areas" (banks and wetlands bordering waterbodies, land subject to flooding, beaches, dunes, salt marshes, etc.) and regulate activities in those areas. Activities in a 100 foot "buffer zone" around some resource areas are also regulated, if the activity will affect the resource area. Finally, "riverfronts" are protected – out to 100 feet from the high water mark in most areas, and 25 feet in densely-developed areas. (In our watershed, Boston, Cambridge, Chelsea, Everett and Somerville have a 25 foot riverfront area.)

Local Conservation Commissions are responsible for deciding what requirements apply to projects in or near protected areas, with opportunity for appeal of their decisions to the DEP. Every city and town in Massachusetts has a Conservation Commission.

Why the regulatory changes? DEP is looking for ways to cut down on its permit review workload. Aerial photographs show substantial loss of wetlands in the state over the last decade, despite the protections of the current regulations. The agency believes that it must reduce staff time devoted to reviewing appeals and increase time spent on enforcement. This is a reasonable goal in theory – if there is in fact an increase in enforcement, and not just a reduction in overall spending on wetlands protection.

DEP worked with an advisory committee to develop proposed changes to the

(Wetlands Protection Act, Continued on page 9)

Mystic River Watershed Association

20 Academy Street, Suite 203

Arlington, MA 02476

Phone: 781-316-3438

On the Web at:

www.mysticriver.org

The **Mystic Messenger** is a publication of the Mystic River Watershed Association (MyRWA), a community-based, private nonprofit, Section 501(c)(3) organization, established in 1970 to protect and restore the natural resources of the Mystic River watershed.

MyRWA Staff

- Nancy Hammett, Executive Director
E-mail: nancy@mysticriver.org
- Julie Horowitz, Director,
Mystic Monitoring Network (MMN)
E-mail: julie@mysticriver.org
- Janet Kovner,
Director of Stewardship and Outreach
E-mail: janet@mysticriver.org

Board of Directors, 2003-2004

Fred Paulsen: President

Jan Dolan: Vice-President

Michael O'Brien: Treasurer

Stewart Sanders: Secretary

Sue Bass

Theresa Czerepica

Elsie Fiore

Carolyn Mieth

John Reinhardt

David Senn

Janey Tallarida

Eugene Benson

Rachel Evans

Bill Maher

Steven Orzack

Jane Sauer

Bob Simha

Thalia Tringo

Letter from the Executive Director

You may be familiar with Robert Putnam's book "Bowling Alone," which documents a dramatic loss in our country's social capital. We are increasingly disconnected from family, friends, neighbors, and our communities. There are lots of reasons why, but we are paying a heavy price – in health, happiness & the quality of our communal life.

I think of this book when I find myself feeling tired and pessimistic about national and world events. I donate to candidates, write my legislators, and always vote – but I rarely feel I have any influence at the larger level. I sometimes think "Why bother?," and I'm sure I'm not the only one. In happy contrast, I do feel that I can make a difference in our watershed, and that gives me great satisfaction.

Why am I writing about this? Because we want more of you to get involved in MyRWA's work. Usually I'm urging you to join MyRWA and to donate money. We still need you to do that (and always will). But we also want your active involvement. There are so many things we could do with more helping hands – things that desperately need doing. Even if we had the financial resources to do a lot more, non-profits get stale and ingrown if they rely solely on paid staff to do the important work. We need your time, talent, and humor.

What's in it for you? You will learn a lot. Watershed protection is inherently interesting – I learn something new about our communities, about science, or about politics every day. Our members and volunteers include local heroes of civic action, scientists, lawyers, government experts, naturalists, outdoor enthusiasts, and just plain folks – all wonderful teachers and companions.

You will help make a small part of the world more beautiful and healthy. Our watershed has been neglected. It deserves more attention, and has enormous potential to improve, if we all chip in. What a gift that will be for us, and what a legacy for future generations!

Finally, you will be connected – to new people (all ages, skills, backgrounds, and personalities) and to your home in nature.

I know – you work or study hard all day, have families to take care of, and generally don't feel you can take on another major responsibility. Then do something small – you don't have to tackle a huge job to make a difference. Or do it together – convince two friends to take on a task with you and share the load. Or join one of our committees and add your voice and talents to an existing group.

Don't Bowl Alone! Think Globally, Act Locally! Be the Change You Want to See in the World! It Takes a Village to Save a Watershed! ... I've run out of clichés, but you know what I mean. Get involved in our watershed work, and experience the joys of community and effective civic action. Check out page 5 of this newsletter for some ideas.

Nancy Hammett

Brooks Estate Wetlands Project Moves Forward

Jim Kiely, M-BELT

Landscape Committee Chairperson

On June 16 the Medford Conservation Committee approved the delineation and certification of three wetland areas within the boundaries of the Brooks Estate, which is part of the Mystic Watershed. The approval marked the end of the first phase of a two-phase project that is being sponsored by the Medford-Brooks Estate Land Trust (M-BELT) and Tufts University. The purpose of the project is to analyze, map and document the hydrology, soils and vegetation of Brooks Pond, a vernal pool and an annual streambed; and then to develop a concept package consisting of drawings, a narrative statement, and a budget for the rehabilitation and protection of the historic area surrounding Brooks Pond.

The documents approved by the conservation committee were prepared by Horsley and Witten, Inc., with assistance from graduate students from Tufts. With all wetland documents now complete, landscape architect David Szlag is working with Jim Kiely of M-BELT's landscape committee to begin a public planning process to develop the concept package for Brooks Pond and the estate's main drive, both of which were completed by Peter and Shepherd Brooks in the latter half of the nineteenth century. Because federal and state guidelines control what can be done within a wetland area, Horsley and Witten's work is an invaluable contribution to the design effort. At present a final concept package is scheduled for completion in mid-September.

Brooks Pond's history is long and complex. In the 1880s a largely Irish-immigrant workforce created the pond by removing some 70,000 cartloads of soil and muck from a bog that was appropriately referred to as Slow Pond. Peter Brooks, a cousin of Massachusetts Governor Edward Brooks, developed the project's design specifications and supervised much of the construction work. Shortly before

that, he had designed and built a small dam to ensure that his planned waterway would remain at a consistent depth of six to eight feet. As soon as the pond was completed, the families of Peter and his brother Shepherd began using it for canoeing and contemplation. They also incorporated the pond into the estate's overall landscape design by opening multiple viewsheds to it from the main drive, the two families' houses and a large meadow that separated them.

Since its inception in 1997, M-BELT has been working to develop a high-quality master plan for the



Brooks Pond c. 1885, with house designed by Peabody and Stearns in background. Photo by Shepherd Brooks.

Brooks Estate's two Peabody and Stearns-designed buildings and all of its 55 acres of open space. The property as a whole is on the National Register of Historic Places and protected by a wide-reaching conservation restriction. As with all master plans, the purpose of M-BELT's will be to create a standard upon which all future projects will be based. Planning for Brooks Pond and the main drive is the last task that needs to be completed before the

organization can finish writing that plan and begin rehabilitation work.

If you would like more information about the Brooks Estate Wetland Project, please visit the project website at <http://groups.yahoo.com/group/brookslandscape/>. You can also contact me, the project manager, by writing to jimkiely1960@yahoo.com. Everyone is cordially invited to take part in this project!



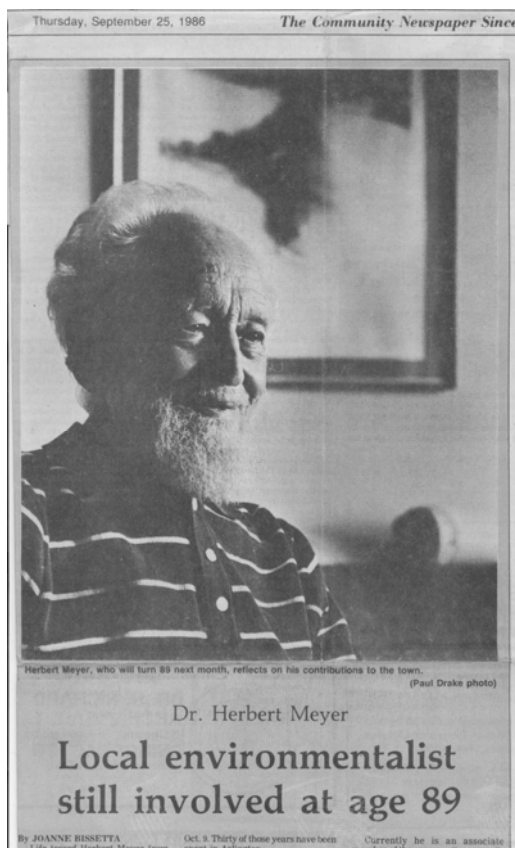
MyRWA's Heritage

Ingeborg Hegemann

Do you know the heritage of the MyRWA? It is a story of a small band of dedicated individuals lead by a driven and focused individual who spent years of his life fiercely dedicated to the watershed's environment. Dr. Herbert M. Meyer lived in Arlington for over 30 years, in an apartment looking westerly over Spy Pond. Originally from Germany until Hitler forced his family to flee, he traveled with his wife and children through France, ultimately to the United States. According to a 1986 article in the Arlington Advocate, in 1942, Dr. Meyer, his wife, and his children walked over the Pyrenees to a small Spanish village on Christmas Day, where they hid in a gravedigger's cottage. As described in the Advocate "My children were too young to know the seriousness of the journey, so they saw it as an adventure." To be able to lead young children over the Pyrenees and make it an adventure tells a great deal about Dr. Meyer.

MyRWA's is also the story of an environment so damaged and so abused that its history is almost unbelievable. It is a classic study case of an environmental turn-around lead by volunteers. In the late 1970's and early 1980's, the Woburn Odor was an everyday affair, the Cambridge City landfill was active and dusty, Spy Pond was polluted with hydrogen sulfide, and the waterways and wetlands of the Aberjona and Little Rivers were ignored and barely considered natural resources. In fact, some of the wetlands in the watershed were considered wastelands, more appropriate to fill than to preserve.

It was in this environment that Dr. Herbert M. Meyer organized a small group of volunteers and began to promote and protect the many natural resources and urban wilds within the Mystic River Watershed. Starting with the preservation of willow trees around Spy Pond, to contributing significantly to the Nationwide Urban Runoff Study in the watershed, to fighting for the upper Aberjona and its groundwater in Woburn, to fighting for the protection of the Alewife reservation, Dr. Meyer contributed his all to his environment. Into his early 90's, Dr Meyer took the #77 Bus to Harvard Square, where he took the subway in to Boston to meet with the MBTA, the Highway Department (formerly, the DPW), the DEQE (now DEP), senators, representatives, and EPA officials. He read EIRs, wrote letters, and made phone calls. He expected and demanded that environmental laws and regulations be adhered to.



Story about Dr. Herbert Meyer, Arlington Advocate, September 25th, 1986. Scanned by Ingeborg Hegemann.

What is his legacy? Well, there is, of course, the MyRWA, now staffed and capable of continuing the improvement of the watershed's natural resources. And there is his spirit. Anyone who knew Dr. Meyer knew the twinkle in his eye, the knowing smile, and the quiet force that drove him. And they also know how crazy he made everyone. Although he tired near the end of his life, he never let go of his high expectations. He expected total dedication, and in most cases, he got it. That is his legacy. Expect the best.



Ingeborg Hegemann was the Public Participation Coordinator for MRWA (as it was then known) in 1980, and a member of the Board of Directors for several years, until 1990.

Profile of Local Groups in the Watershed

Woburn Residents' Environmental Network (WREN)

Fel Medeiros & Rodney Flynn

WREN (Woburn Residents' Environmental Network) is an all-volunteer grassroots organization dedicated to helping Woburn conserve and protect our environment and natural resources. They work with neighbors and City officials to promote environmental awareness, support community conservation activities, and implement educational programs that develop a sense of environmental stewardship.

WREN provides opportunities for Woburn residents of all ages and backgrounds to appreciate and protect Woburn's conservation areas. Some of their current activities and programs include:

- Woburn Stewardship Program that monitors every conservation area in the city
- Major and minor clean-up events, including WREN's weekly "Trash Walk" every Saturday around Horn Pond (Woburn's largest Conservation Area).
- Conservation area Nature Walks & Bird Walks
- WREN's Woburn Garden Awards and their Annual Photography Contest
- Community service projects with local schools and organizations
- Citizens Park Summer Concert Series

WREN has grown from a handful of people meeting on the "Woburn Chat" three years ago to a recognized and respected group in the community. People now come to



WREN at work. Photo by Fel Medeiros.

WREN with problems and suggestions and others offer their help and resources. WREN continues to clean and improve public and conservation areas, but recently several Woburn neighborhood groups have come forth and asked WREN to help organize cleanups on their streets. So everything is looking "Green" for WREN in the coming future.

For more information about WREN, please visit www.GoWREN.org



HELP US SAVE COSTS!

Sign up now and we will email a PDF of future editions of our newsletter to you.

We can save printing and postage costs *and* save a few trees too!

Call 781-316-3438 or email:
janet@mysticriver.org to sign up.

How can you help?

Get involved to protect the Mystic!

MyRWA needs enthusiastic community volunteers to help us protect the watershed. There are lots of ways to help—these are just some options. Please email janet@mysticriver.org or call 781-316-3438, if you are interested in any of the following:

- Contact local media to promote our events and local issues.
- Design a poster display for use at local events.
- Help solicit donations from local businesses to sponsor watershed programs & events, such as water quality monitoring and Mystic Herring Run Festival.
- Join one of our committees (outreach, water quality, development, policy).
- Provide accounting support (1-2 hrs / week).
- Help organize our library.
- Help organize an upcoming member event (member dinner, walk, canoe ride, fundraising gala).
- Help with mailings (refreshments provided!).
- Track government & foundation grant opportunities.
- Be our "Watershed Steward" in your neighborhood—keep an eye on the waters, alert us to local issues of watershed importance.
- Update our mailing list and membership database.
- Produce our quarterly newsletter (in Publisher).

Volunteers are needed for both one-time and ongoing projects. If you would like to get involved but aren't sure how, please give us a call.



Spotlight on Mystic Volunteers

Thalia Tringo

Julia Osgood, Arlington

Julia Osgood may be a native Texan, but her love of the environment knows no geographic boundaries. "I have a life-long interest in the outdoors and the natural world," Julia explained, and that interest has been a continuous thread weaving through her professional and personal lives.

After completing an undergraduate degree in Biology from the University of Texas at Tyler and a Master's degree in Environmental Science from University of Texas at Dallas, Julia worked in several related fields. In Dallas, she taught high school biology and physical science; did medical research at the University of Texas Southwestern Medical School; worked at an environmental consulting firm, helping a major airline deal with the removal of many underground storage tanks that were out of compliance; and, finally, went into the field of technical writing.

Like many of our volunteers at MyRWA, Julia's environmental interests range beyond her work life. As a member of the Dallas County Audubon Society, she edited their monthly newsletter. She also led wildflower walks through her involvement with the Dallas Nature Center. One of her proudest volunteer achievements, however, was her work on the Dallas Household Hazardous Waste Committee. "We spent a lot of time at City Hall, wrote brochures, and gave talks to other community groups to get the word out." As a result of their hard work and persistence, Dallas County now has regular household hazardous waste days where members of the community can bring in items that might otherwise pose a threat to the environment.

Julia moved to this area seven years ago. "I loved the Mystic River from the first time I saw it and knew I wanted to work on anything that would help preserve such a beautiful environment," Julia declared. She found the Mystic River Watershed Association on the internet after seeing a sign for the Herring Run one year. Since she joined MyRWA's Outreach Committee two years ago, Julia assisted with the Herring Run registration last year and coordinated registration this past May. "I enjoy my involvement in MyRWA and look forward to continuing to serve the organization and the environment," Julia said. We are lucky to have this dedicated environmentalist working on behalf of our watershed.



Check www.mysticriveronline.org for up to date water quality data and recreation forecasts.

Members Make a Difference

Our work would not be possible without the generous contributions from the many individuals, organizations and businesses. The following are a small sampling of the members who recently renewed their commitment to the Mystic. We deeply appreciate the support of everyone listed here, as well as all those who have supported our work throughout the years.

Tom and Carole Allen
Mark D'Andrea
The Dodge Company
Mr. and Mrs. Robert A. Gallant
Matthew Heberger
Rowena Hodges and Raymond Castro
Margaret and Lewis A. Law
David and Lore Levitt
Mystic River Yoga
Dara Olmsted
Adrienne and Hartley Rogers
Jane B. Strete
Maria Van Dusen

Save the date!

Medford's gala Arbor Day celebration is Saturday, October 2nd from 1pm to 3pm.

Watch for further information.

Mystic Herring Run Festival Photos



MyRWA tent. Photo by The Menotomy Journal.



Festival crowd. Photo by The Menotomy Journal.



Chelsea Creek Action Group - leadership award ceremony. Photo by David Dahlbacka.

Canoe and Kayak rides on the Mystic. Photo by David Dahlbacka.



Big Bass Puppet. Photo by David Dahlbacka.



River Woman, by Carol Chapman. Photo by Wanda Lau.

Mystic River Mural panels on display (David Fichter, muralist). Photo by The Menotomy Journal.



Citizen Schools' Water Quality Monitoring Apprenticeship

Julie Horowitz

Standing on the top of Bunker Hill in Charlestown, with the Mystic and Charles visible on either side, is a great model for understanding the ever elusive watershed concept. This past semester I taught an "Apprenticeship" at Citizen Schools' Edwards Middle School campus in Charlestown. Citizen Schools is an afterschool program that provides students in urban public schools access and exposure to professionals in the community to learn new skills and explore the broad possibilities for their futures.

Working closely with Citizen School staff and former MyRWA intern, Ata Suanda, I taught students about the Mystic River and water quality monitoring. Nasahn, Brian, Netrecia, Sergio and Antonio learned about flow of water from the streets into stormdrains and into the rivers. They tested the water quality at the Schrafft Center and the Little Mystic Channel and learned about pH, dissolved oxygen, and many other concepts. One of the highlights was meeting Officer Patrick Johnston of the Everett Marine Police to learn about water safety.



Brian presenting sampling site locations at final WOW event. Photo by Officer Patrick Johnston.

Based on their explorations, the students created a PowerPoint presentation entitled "Our Water Project" and shared their work at the Citizen Schools' final presentation night at the Charlestown Working Theater. It was exciting to see their ownership of not only water quality concepts and skills, but of river stewardship. As Sergio explained to the audience, "we did this water quality project because we want to help the community know what condition the water is in...to help [the water quality] you could stop littering, recycle more, and tell the power plants to stop polluting."



Policy Committee Tours Cambridge Water Supply Watershed

Matthew Shuman

Chair, Policy Committee

MyRWA's Policy Committee toured the City of Cambridge drinking water source area on May 10, 2004. The watershed, which drains into Hobbs Brook and Stony Brook reservoirs, is located in Lexington, Lincoln, Waltham, and Weston. The objective of our tour was to learn about various Best Management Practices (BMPs) that have been used by the City and private landowners to protect the City's drinking water source.

BMPs are techniques that tend to reduce runoff and improve water quality. We were able to see many innovative BMPs, including infiltration swales, stormwater detention ponds, vegetated swales, and wet ponds. Despite the important water quantity and quality control functions these BMPs perform, we were amazed at how well they blended in with the natural surroundings. The Policy Committee hopes to use what we have learned to advocate for better protection of our own watershed.

A special "thanks" goes out to Chip Norton and Peter Vargas, of the Cambridge Water Department, who coordinated and led the tour.



Chip Norton showing Policy Committee members a map of the Cambridge water source area. Photo by Matthew Shuman.

SPECIAL THANKS to:

- **John Morris** for his donation of 3 new computers and for maintaining our website!
- **Sue Bass** for hosting the first of a series of dinners to thank our donors.
- **Anne S. Katzeff, of ASK Design**, for her work on our new corporate brochure.
- **Roger Frymire** for single-handedly controlling water chestnuts in the Alewife Brook sub-watershed in a 4-year effort. (Details available on our website)

STAY INVOLVED —

Interested in finding out about upcoming activities but reluctant to sign up to the Mystic listserv? We have another option for you— **sign up to receive a monthly email alert.**

Just contact: janet@mysticriver.org & add your email to the list (email addresses are blind copied, so no one else will see your email address.)

Get Connected . . .

- ◆ **Visit our website:** www.mysticriver.org
- ◆ **Join our listserv and discussion forum.** It's a great way to learn about activities, issues and developments in the watershed. Send a blank message to: mystic-river-subscribe@topica.com
- ◆ **Call our office** (781-316-3438) to find other ways to get connected.

(Wetlands Protection Act, Continued from page 1)

regulations, which include some improvements. A key-stone of the package is a waiver of review for buffer zones. This is an incentive for developers to stay out of the 50 feet closest to the resource area, by making it easier for them to develop in the second 50 feet. Is this a good deal for environmental protection? Will it cut down on unnecessary appeals of permits to the DEP? We don't think so.

There are two major problems with the buffer zone waiver. First, the protection of the first 50 feet is not permanent. The advisory committee had discussed locking in the protection with a conservation restriction. That provision was missing in DEP's proposal. Developers could take advantage of the waiver of review, and then come back later with a proposal to develop in the first 50 feet of the buffer zone. Second, the conditions under which developers could qualify for the waiver are not strong enough to prevent damages from construction in the outer 50 feet. In general, the proposed change is very developer-friendly.

MyRWA objects to other parts of the proposal as well. For example, residential properties (including large complexes) could be expanded by 20% in riverfront areas without any review, as so-called "minor" activities. These "minor" expansions could have a very big impact on water quality.

Comments on the proposal were due to DEP in June, and final action is scheduled for the fall. We hope DEP will step back and reconsider the whole proposal, rather than going forward with these drastic changes. You can see MyRWA's comments on the rule on our website (www.mysticriver.org).



Thanks for continuing support to:

- *U.S. Environmental Protection Agency*
- *National Fish & Wildlife Foundation*
- *MA Department of Conservation and Recreation*
- *Massachusetts Environmental Trust*
- *Massachusetts Water Resources Authority*
- *Town of Arlington*
- *Altria*
- *Tufts / Mystic Watershed Collaborative*
- *Anonymous funders*
- *Organizational and individual donors*
- *All the photographers contributing to this issue*

KNOTWEED PROJECTS in the Mystic

Minuteman Trail Work throughout the summer

The Arlington Bicycle Advisory Committee, Green Streets & Friends of Spy Pond Park, and Arlington Land Stewards will be doing trail cleanup to control the spread of Japanese knotweed along the Minuteman Trail in Arlington on the following Saturdays: July 24th, Aug 14th, Aug 28th. 10am- 1pm. Contact for specific meeting place along the Minuteman Trail. People are welcome to help anytime during that time period. If you have work gloves, clippers, loppers, and similar gardening tools, please bring them. Info: email: kernanen@earthlink.net or <http://www.abac.arlington.ma.us/Pages/projects.html>



Japanese knotweed, along the Mystic, in Somerville.
Photo by Morgan Jenkins.

Japanese knotweed removal continues along the Mystic River.

Join other volunteers and help cut Japanese knotweed, an aggressive invasive plant, from multiple sites on banks of the Mystic River, in Medford. Weekends throughout the summer. Contact Rowena at 781-483-3905, raymond@surf.com or Alex at 617-529-9044, Alexander.Sherman@tufts.edu for additional information. *Sponsored by Friends of the Mystic River.*

Help support this important habitat restoration project!

Activities in the Watershed

Sun, July 18th, 1-3pm. Tree Identification: Tools for Identifying: Using a Key, Picture Matching & Specimen Collecting & Sat, July 31st. 1-3pm. Tools for Remembering: Making an Herbarium, a Twig Chart and Photographic Record. Meet: Maynard Ecology Center basement of Neville Place, 650 Concord Ave, Cambridge. These linked programs will provide hands-on experience for learning to recognize trees. FREE & open to the public. Children are welcome in the company of an adult. Please register: e-mail friendsoffreshpond@yahoo.com or call Ranger Jean Rogers at 617-349-4793 & leave your name & phone number. *Offered by Friends of Fresh Pond Reservation & the Fresh Pond Ranger Program.*

Sat, July 24th, 9am. Friends of Alewife Reservation (FAR) Annual Alewife Canoe ride. Meet at Bulfinch east parking lot off of Acorn Park Drive at point closest to river. Paddling west through Little River, Perch Pond and to Little Pond. Call Stew at 617-489-3120, or Carl, 781-648-7682. *Sponsored by Friends of Alewife Reservation*

Sat, August 7th, 9am. Rag Rock & Battle Rd Nature Walks, Woburn. Come with us for a walk and experience these two hidden Woburn Conservation areas. Meeting location to be determined. For info: www.gowren.org *Sponsored by Woburn Residents' Environmental Network (WREN).*

Sat, August 28th, 12-7pm. Everett's 2nd Annual Take Me to the River Festival. Gateway Park, adjacent to the Gateway Shopping Center. The festival will include entertainment, children's rides and games, clowns, and free boat rides along the Malden River. To reserve a table or for additional information about the Festival please contact the Everett Chamber of Commerce at 617-387-9100. Raindate: Sunday, August 29th. *Co-hosted by the City of Everett and the Everett Chamber of Commerce.*

Wed, September 22nd, 6pm. SAVE the DATE! for our next Over the River & Through the Woods: Exploring the Mystic River Watershed walk. For information, please call Janet at 781-316-3438 or janet@mysticriver.org *Sponsored by Mystic River Watershed Association.*

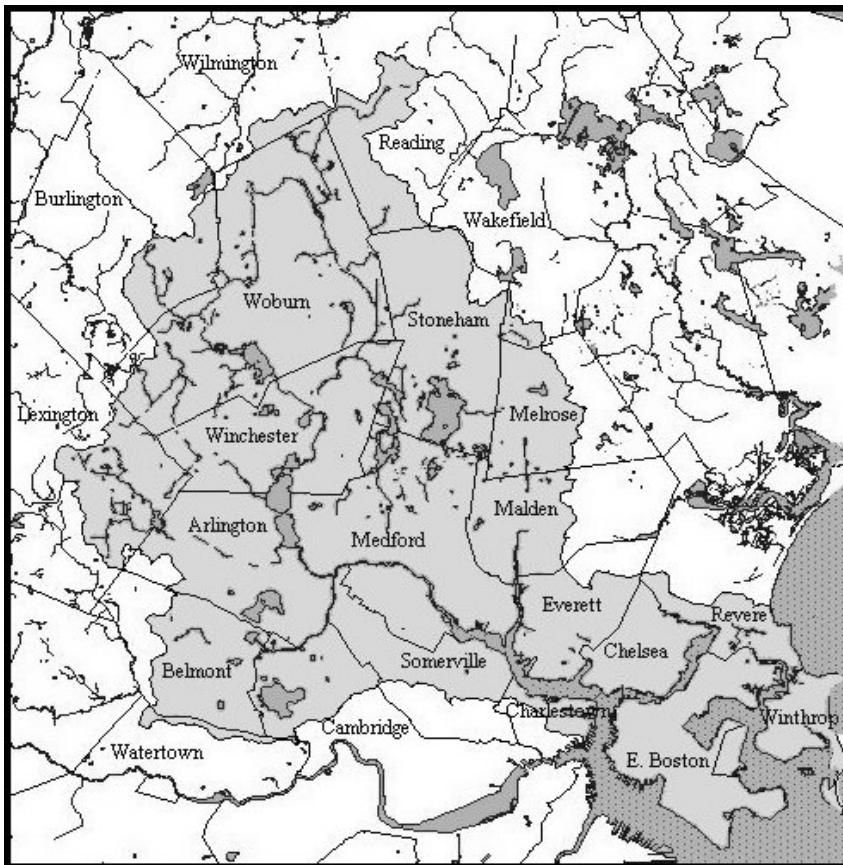
Visit www.mysticriver.org for a complete list of *Activities in the Watershed.* We update it regularly.

MYSTIC RIVER WATERSHED

The Mystic River Watershed Association depends on the support of its members to achieve its goal of restoring, preserving and enhancing the natural environment.

Please consider a tax-deductible membership, if you have not already done so.

Thank you for your support!



Won't you help us? Join the MyRWA today! or, Please renew your support!

YES! I'd like to support the MyRWA in its work to protect, conserve and restore the natural resources of the Mystic River watershed. Enclosed is my tax-deductible membership contribution:

\$25 Individual
 \$45 Family
 \$60 Non-Profit
 \$100 Friend
 \$250 Patron
 \$500 Sponsor
 \$1000 Guardian
 \$5000 Angel
 \$_____ Other
 I'd like to volunteer. Please send me information.

Add my email to MyRWA's listserve.
 May we thank you in our newsletter?
 My company has a matching gift program.

Name _____

Street _____

City _____ State _____ Zip Code _____

Phone (_____) _____ E-mail _____

Please mail your tax-deductible donation, payable to MyRWA,

**To: MYSTIC RIVER WATERSHED ASSOCIATION
 20 ACADEMY STREET, SUITE 203
 ARLINGTON, MA 02476**



MYSTIC RIVER WATERSHED ASSOCIATION
20 Academy Street, Suite 203
Arlington, MA 02476

NON-PROFIT ORG.
U.S. POSTAGE
PAID
ARLINGTON, MA
PERMIT NO. 50995

**SUMMER ACTIVITIES
IN THIS ISSUE!**

CANOE THE MYSTIC this summer!

Mystic Meanders Canoe trips: 6pm - dusk.

Meet: Blessing of the Bay Boathouse, 32 Shore Dr, Somerville (near Mystic Ave & Route 28). Join us for one or more paddles along the Mystic River. Canoes are provided. Space is limited – reserve early.
If it rains, we will cancel.

- **Thursday, August 12th:** *6th Annual Fingerling Fling*. Look for the young river herring as a follow-up to last spring's Herring Run. **Free. Donations welcome.** *Supported by Alewife/Mystic River Advocates.*
- **Thursday, September 9th:** \$5 / person.

Please RSVP: John at j_gillette@hotmail.com or 617-628-4665 or stop by the Boathouse (32 Shore Drive / 617-623-6137) to sign up.

Directions: 781-316-3438, janet@mysticriver.org or www.mysticriver.org

Co-sponsored by Alewife/Mystic River Advocates, Boys and Girls Club of Middlesex County, Mystic River Watershed Association.

JOIN US:

MyRWA's Annual Volunteer Appreciation Picnic

**Tues, July 20th, 6pm—dusk,
Sandy Beach, Upper Mystic
Lake, Winchester.**

Help us celebrate all of the dedicated people who make a difference to the Mystic.

Raindate: Thursday, July 22nd.

Details on our website!

www.mysticriver.org