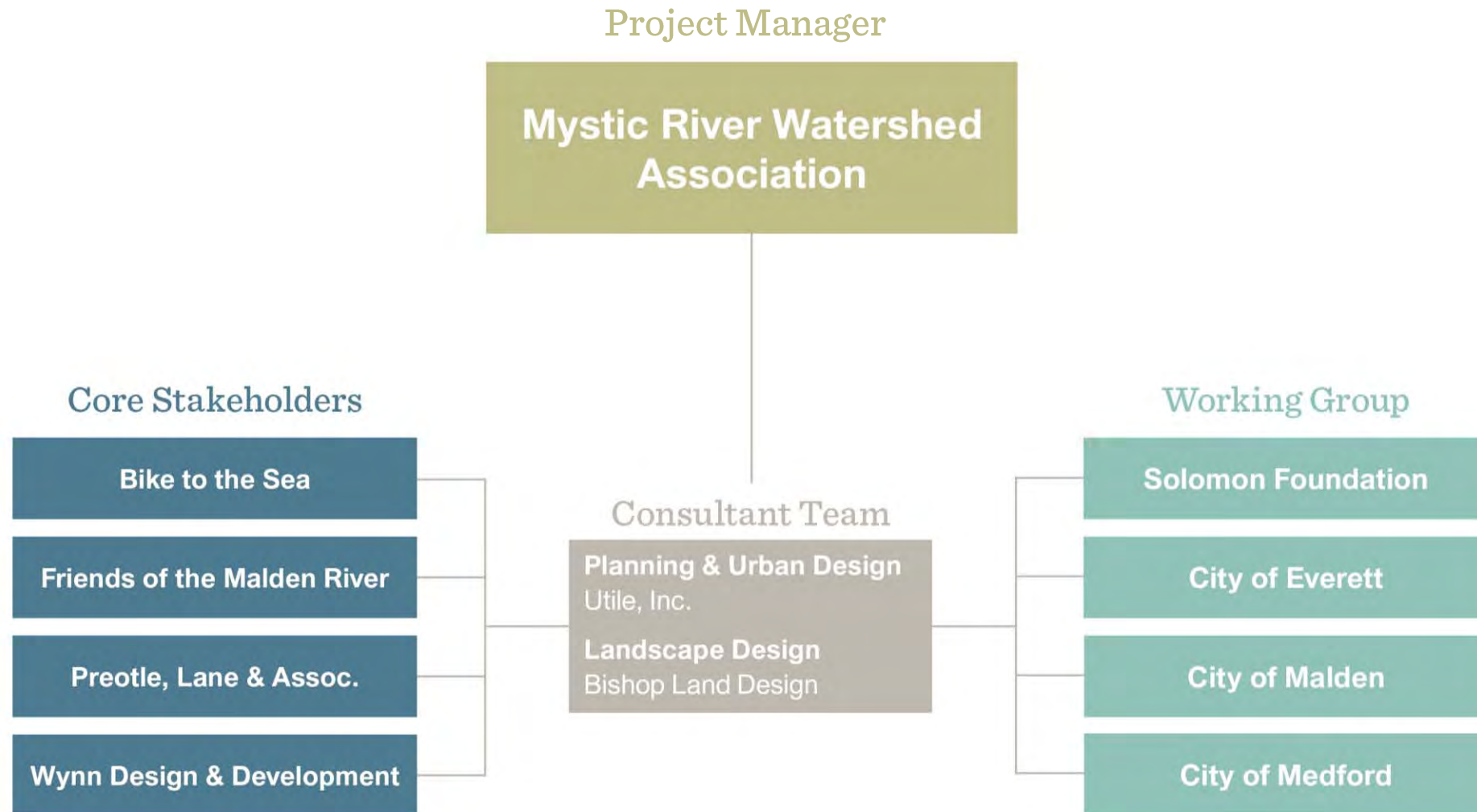
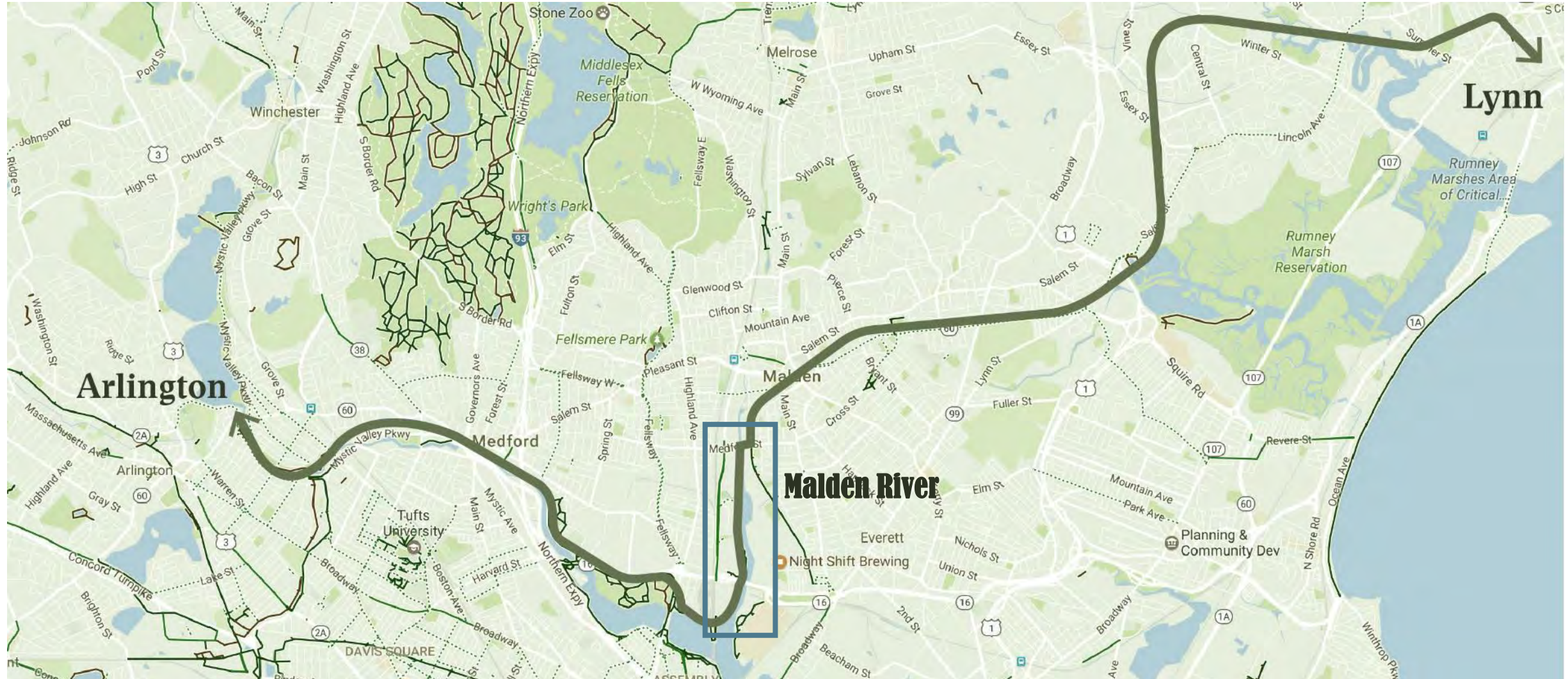


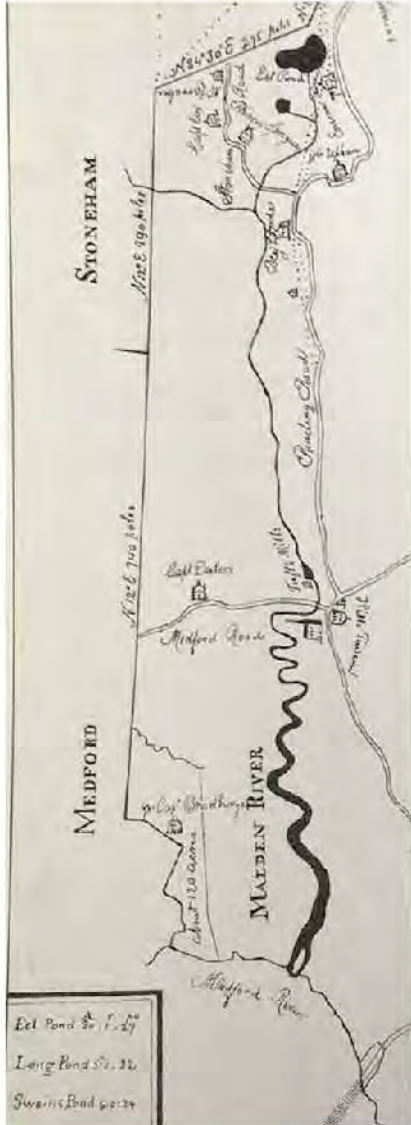
MALDEN RIVER
GREENWAY



Malden River Greenway could fill the gap in a Lynn to Arlington Link



Malden River's Past



From marshes to industry

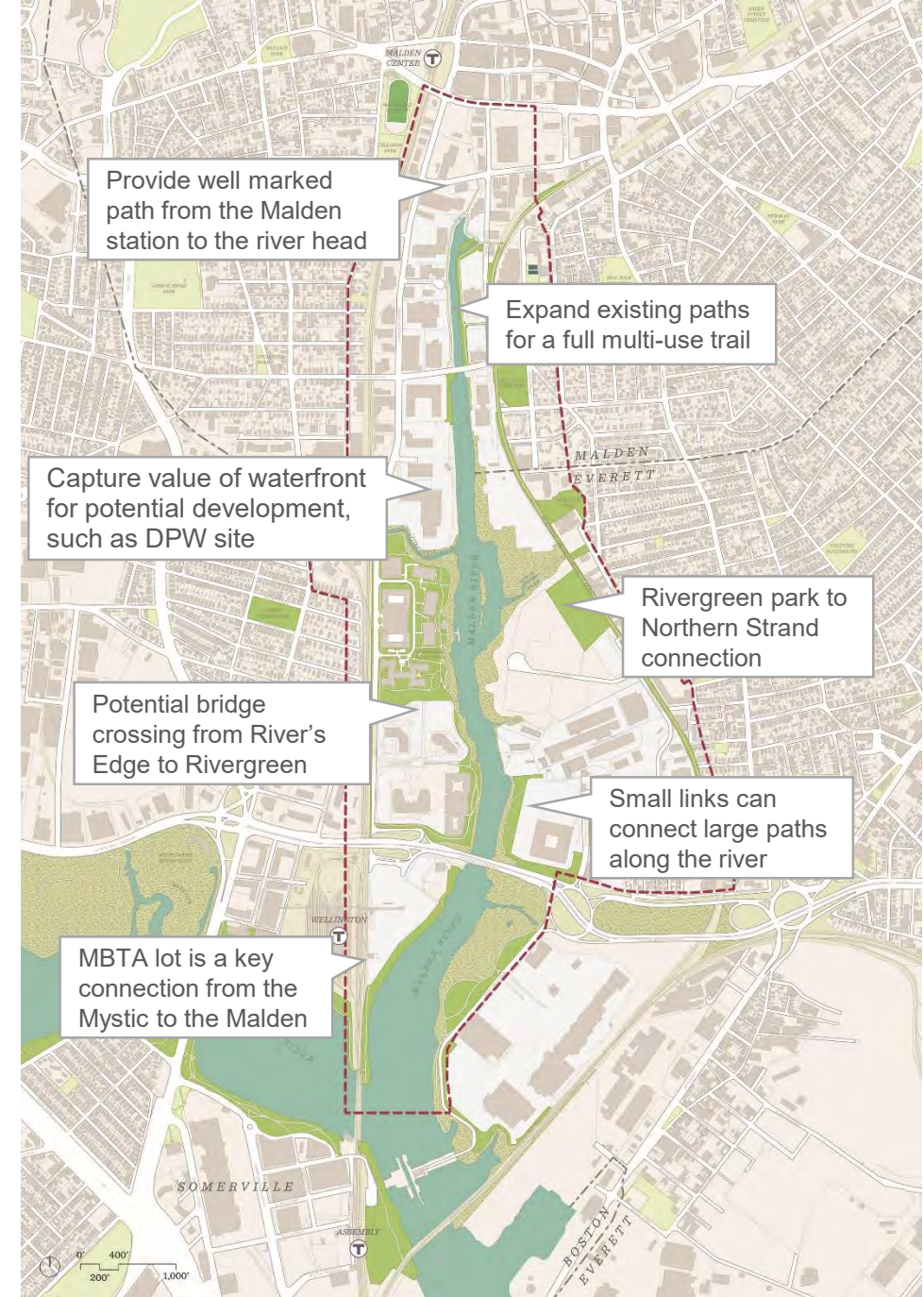
- The river transitioned to industrial uses and was channelized in the 1880's.
- It has remained such until recent years.





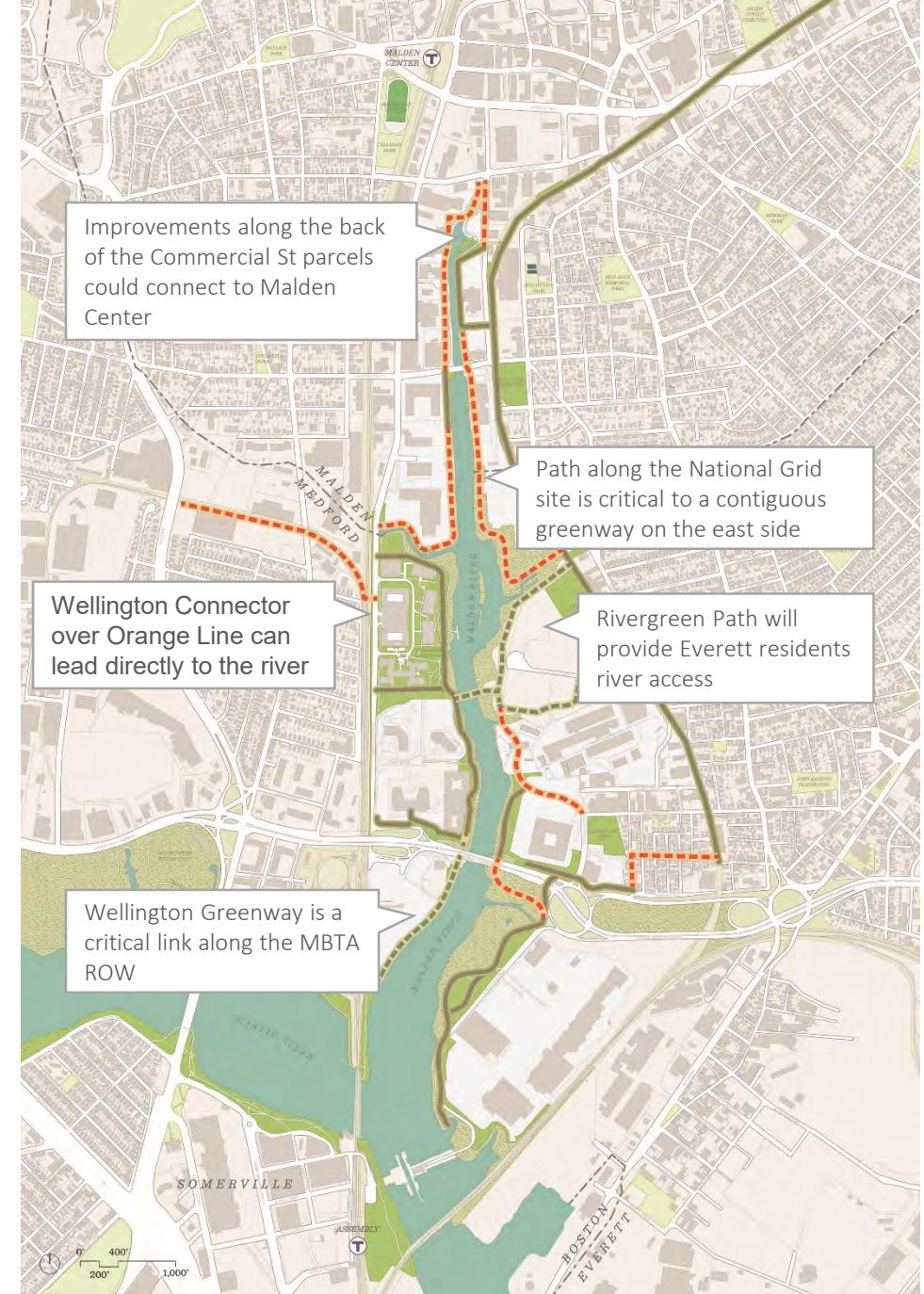
Opportunities

- New connections from the MBTA stations will provide multimodal connections for outside visitors
- Connecting the Northern Strand Trail to the Rivergreen Park will provide a direct connection to the river for local residents
- A land bridge over the Orange Line tracks will provide direct access for the Wellington neighborhood to the riverfront
- Underutilized or undeveloped sites should capture the value of waterfront access in future development.



Path Network: Existing, Planned, and Gaps

- The National Grid Site and the western edge of the river in Malden are two focus areas for connecting the greenway
- Rivergreen will be constructing a full path to the water as part of the redevelopment plan
- The Wellington Greenway is also in the planning stages and will connect under Revere Beach Parkway
- The potential pedestrian bridge from the Wellington Neighborhood could be a significant link to draw residents to the river.



Community Engagement: Venues for Public Input

- **Public Meetings and Walking Tours** (250 attendees)
- **Online Survey** (145 respondents)
- **Online Mapping Tool** (71 respondents)



Community Engagement: Public Meeting #2

- Representatives from all three surrounding cities attended
- **Over 80 people participated in the workshop**, sharing their reflections on the initial concepts
- Attendees offered input on **future opportunities for recreation, open space and community programming** along the river.
- Breakout groups made certain that **each person at the meeting had an opportunity to participate**

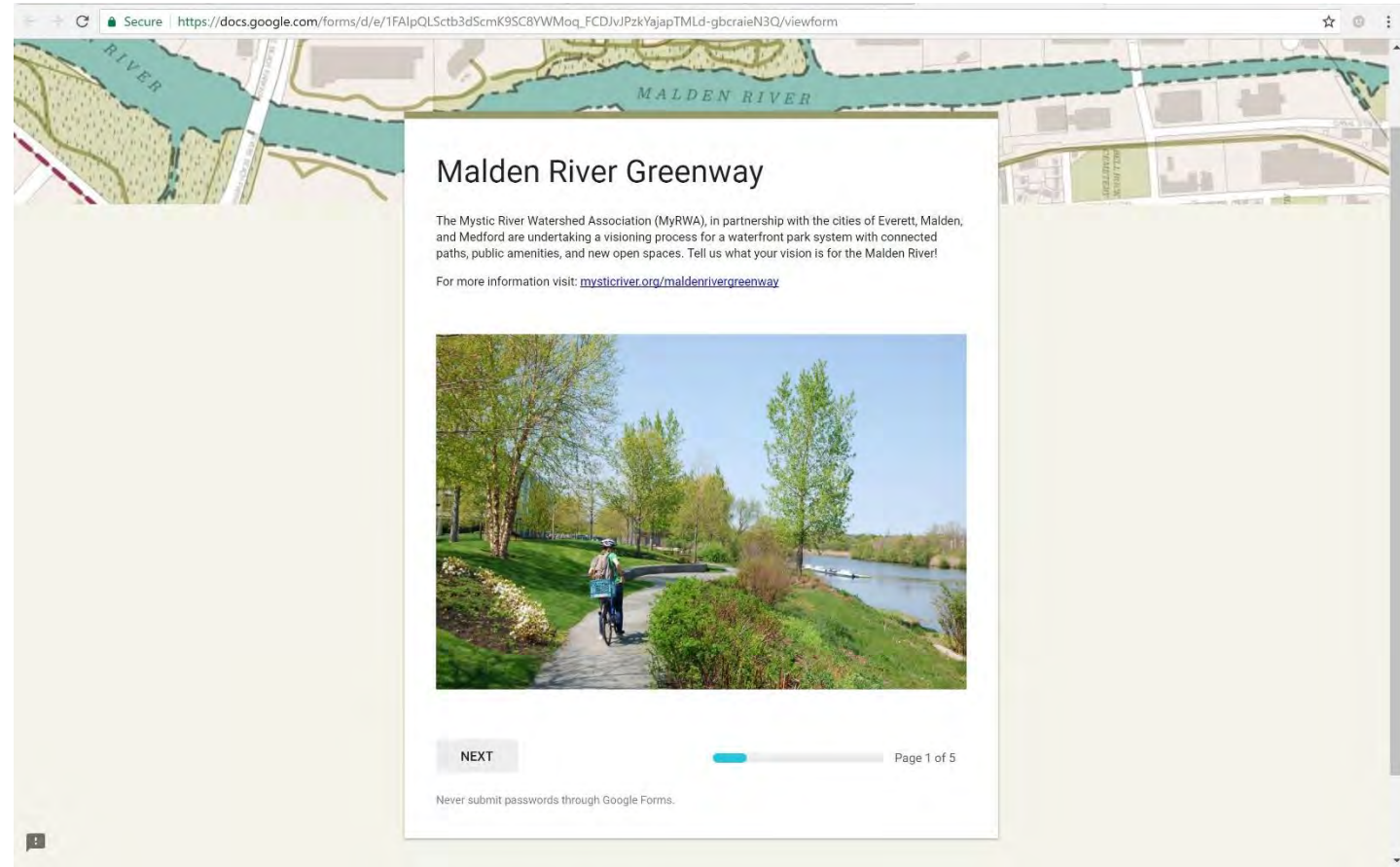




Community Engagement: Online Survey

What we heard!

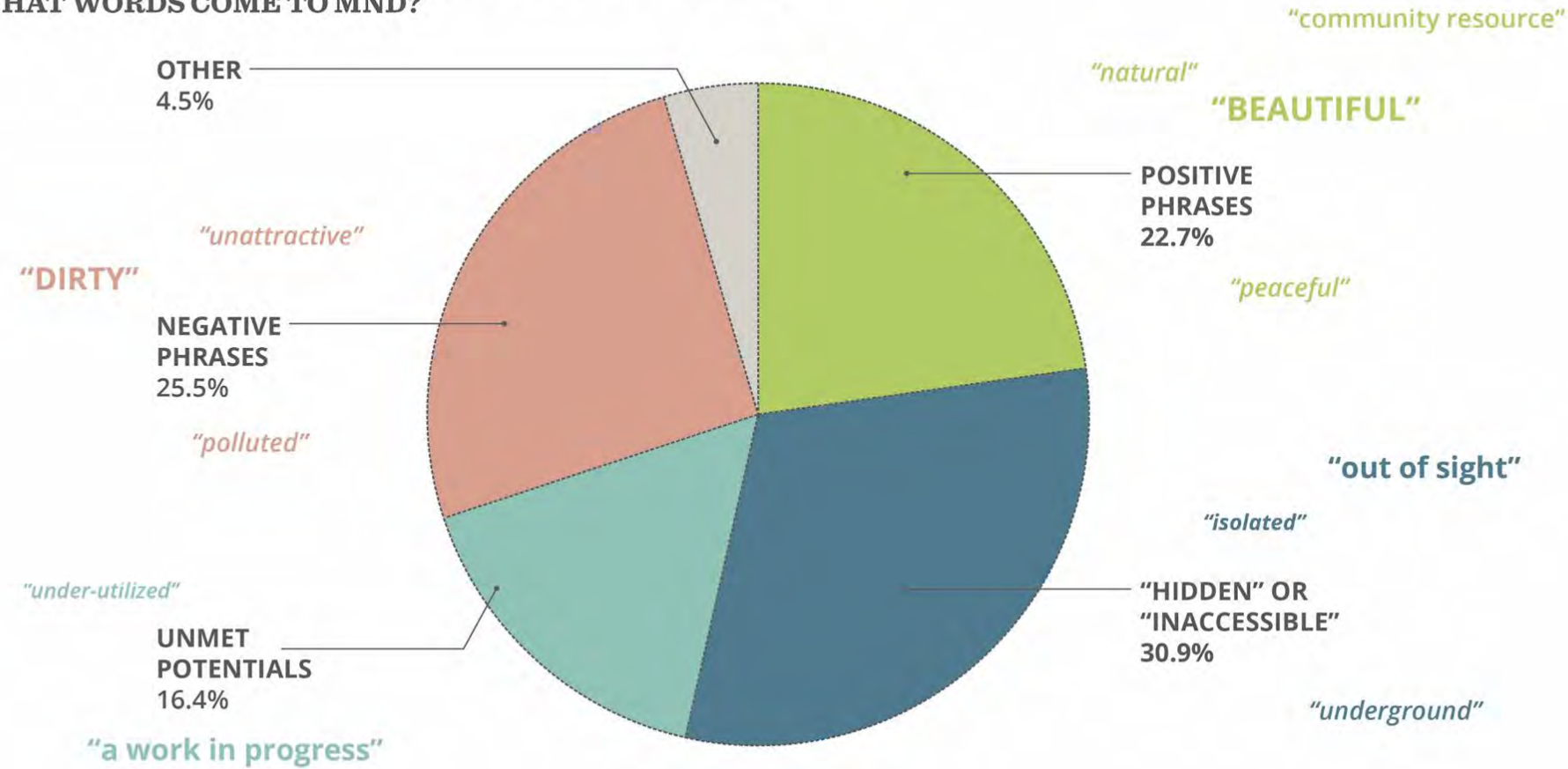
- Phrases for vision statement
- Most important factors for vision:
 - Access
 - Community Uses
 - Connectivity
- Information about respondent
 - What they do on the riverfront
 - How they access the river
 - How they get to the river (drive, walk, bike, transit)
 - How often they visit the Malden River?
 - User Profile (age/gender/race)
- General Comments



The screenshot shows a Google Forms survey titled "Malden River Greenway". The form is displayed in a web browser window with the URL https://docs.google.com/forms/d/e/1FAIpQLSctb3dScmK9SC8YVMQq_FCDJvJPzkYajapTMLd-gbcraieN3Q/viewform. The form content includes a map of the Malden River at the top, followed by the title "Malden River Greenway". Below the title, the text reads: "The Mystic River Watershed Association (MyRWA), in partnership with the cities of Everett, Malden, and Medford are undertaking a visioning process for a waterfront park system with connected paths, public amenities, and new open spaces. Tell us what your vision is for the Malden River!" and "For more information visit: mysticriver.org/maldenrivergreenway". A photograph of a person riding a bicycle on a paved path next to the river is shown below the text. At the bottom of the form, there is a "NEXT" button, a progress bar indicating "Page 1 of 5", and a footer note: "Never submit passwords through Google Forms."

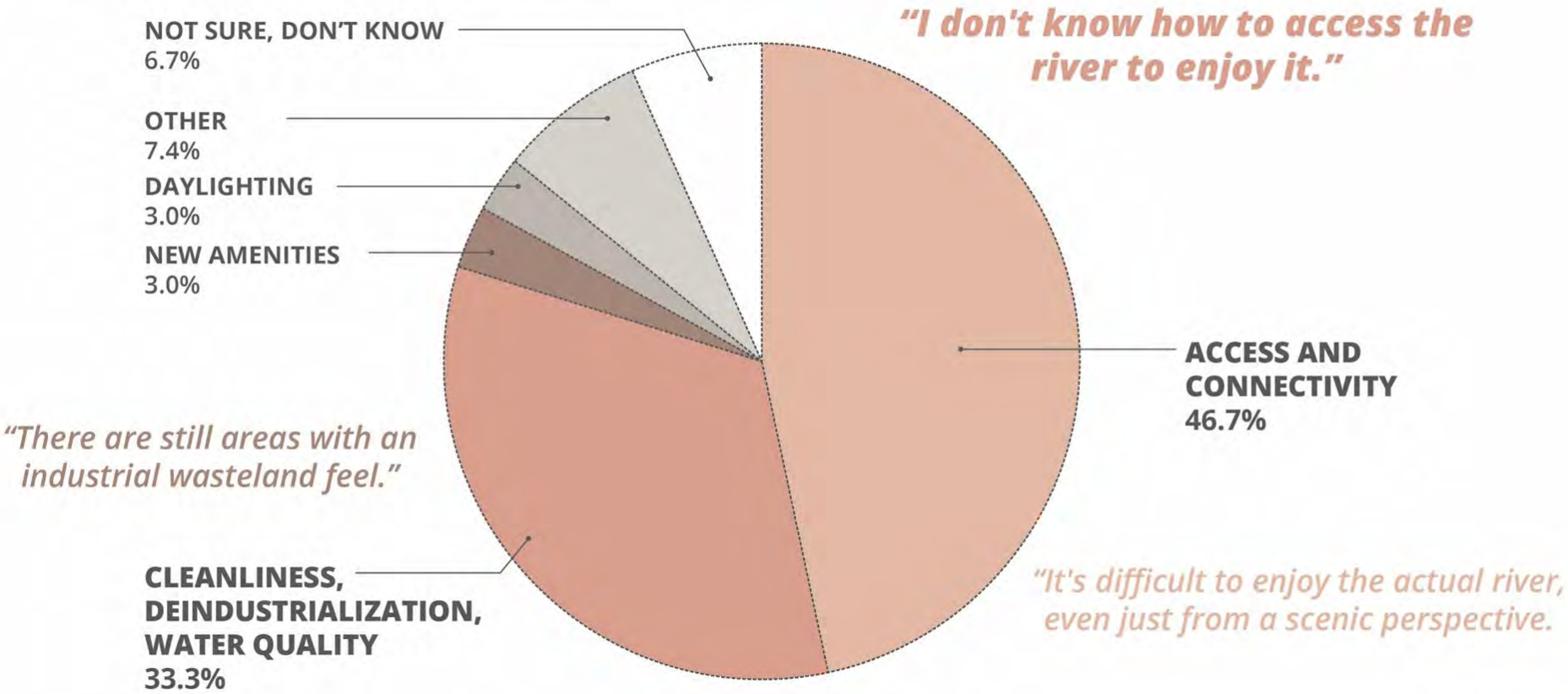
Community Engagement: Online Survey

WHEN YOU THINK ABOUT THE MALDEN RIVER TODAY,
WHAT WORDS COME TO MND?



Community Engagement: Online Survey

NAME A FEW THINGS YOU DISLIKE
AND WOULD CHANGE ABOUT THE MALDEN RIVER.



Community Engagement: Online Survey

WHICH OF THESE FEATURES WOULD YOU BE EXCITED TO SEE ALONG THE MALDEN RIVER?

MOST EXCITED



EXCITED



“...a place where crew teams would draw spectators and revenue for the City”

LEAST EXCITED



“...a resource that is respected and appreciated by the community!”

Community Engagement: Mapping Survey

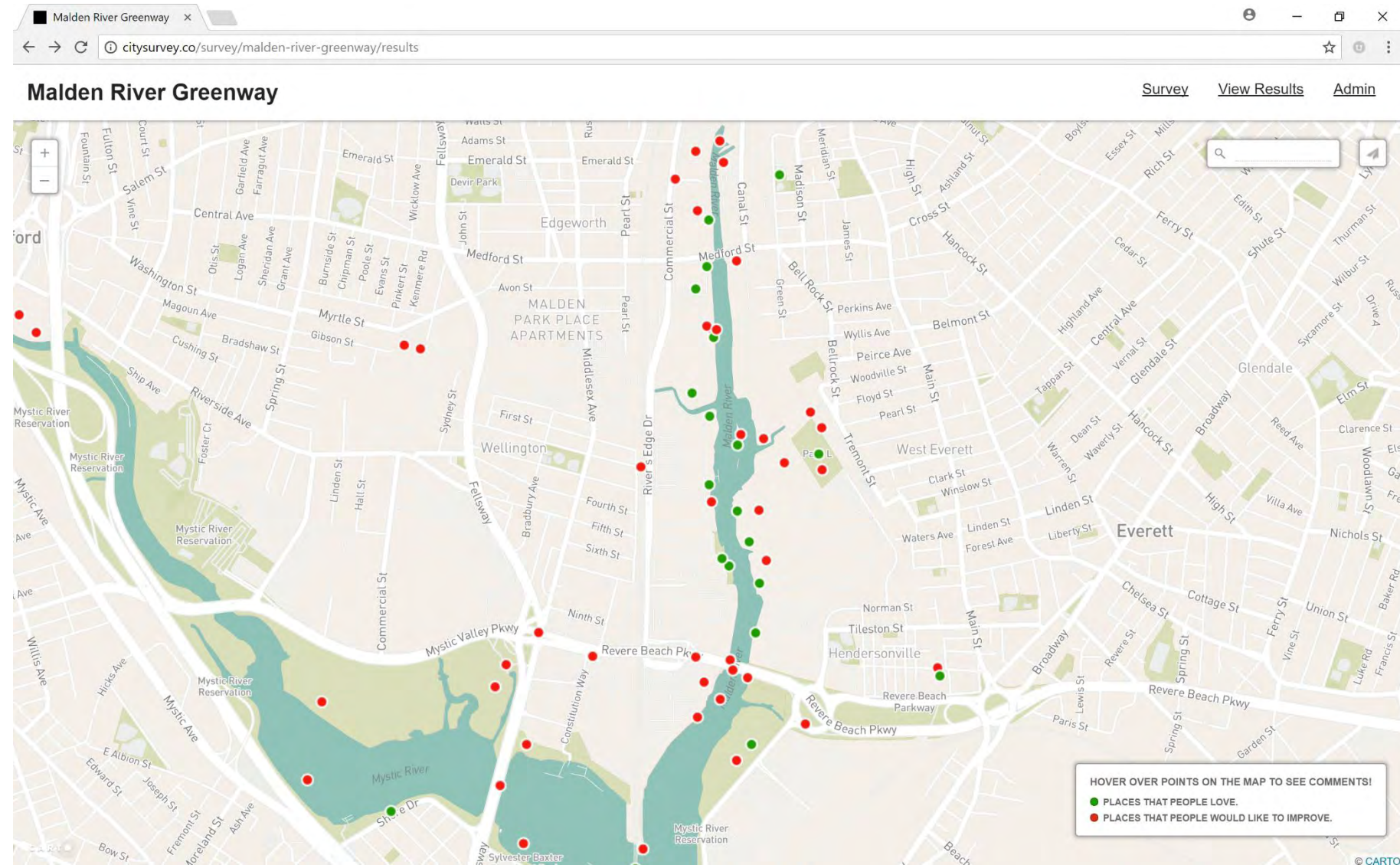
**Tool ties responses to
a point on the map**

**Places that people
love...**

*“beautiful, well-maintained
landscape - all waterfront parks
should be like this one!”*

**Places that people
would like to improve...**

*“remove tires and possibly
submerged trucks”*





City of Everett Hosts Public Meeting On the Malden River Greenway Vision Plan

Last week, on a perfect mid-autumn evening, the City of Everett hosted the third and final public meeting concerning the Malden River Greenway Vision Plan. The meeting was held in an open air tent at the BNY Mellon property adjacent to the City of Everett parkland bordering the Malden River. Mystic River Watershed Association (MyRWA) Executive Director Patrick Herron opened the evening with a hope that this once in a lifetime opportunity to bring back the former glory of the Malden River is realized. He certainly believes so, as he has seen the enthusiasm of local citizen groups such as the Friends of the Malden River and Bike to the Sea fully committed behind this project. In addition, the three cities bordering the Malden

River, Everett, Malden and Medford are fully committed to seeing walkways and bike paths developed along each shore of the river. Additionally, Wynn Development, who last week broke ground on a RiverWalk at the former GE site, Preotle Lane and Associates, developer of River's Edge in Medford and National Grid, have or are undertaking efforts on their properties to facilitate the developments of these planned improvements.

Representing Everett at the meeting, was Mayor Carlo DeMaria's Chief of Staff, Kevin O'Donnell who expressed the mayor's support for these improvements. Mr. O'Donnell remarked that no one would have imagined just a few years ago what recreational facilities could be developed along the



From left: Kevin O'Donnell Chief of Staff to Mayor Carlo DeMaria, Martin Suuberg Commission of Massachusetts Department of Environmental Protection, and Tom Philbin Director of Communications for the City of Everett.

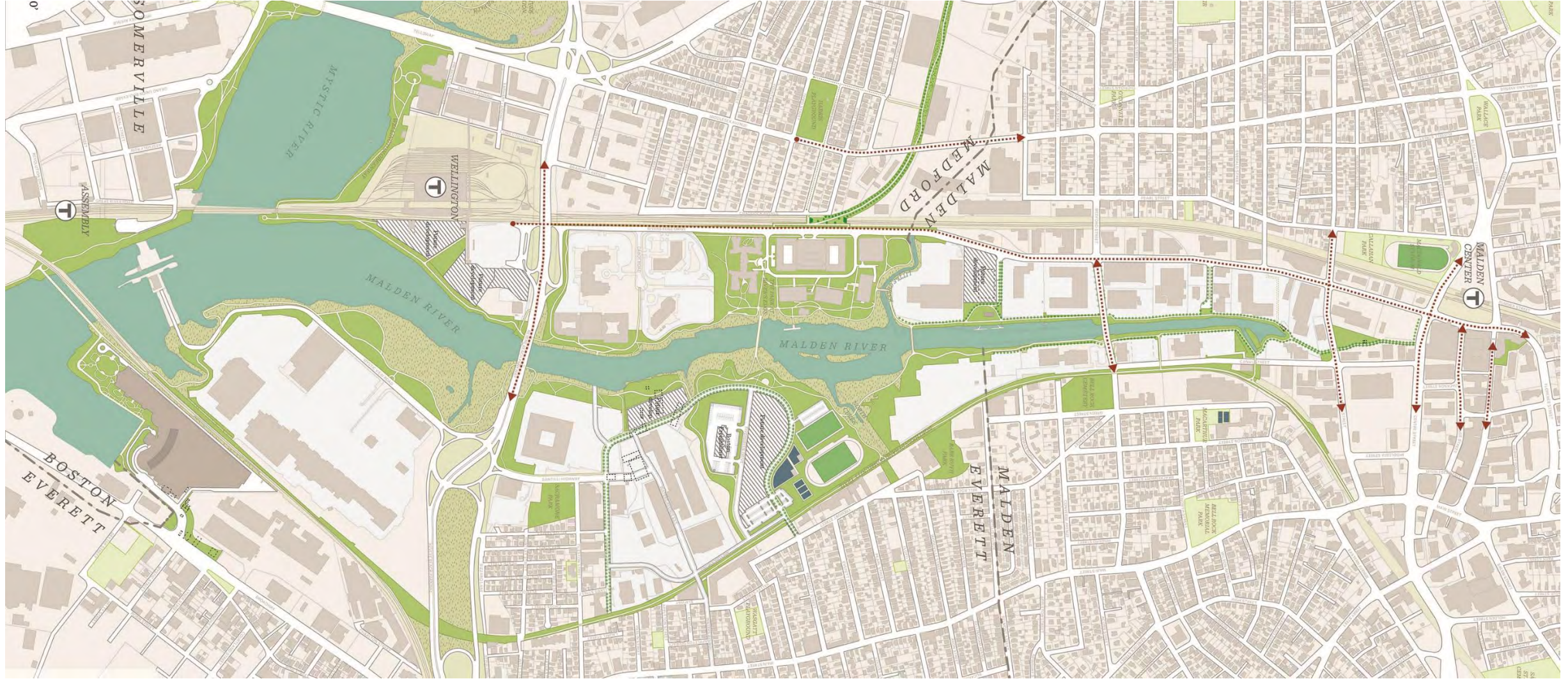
Malden River. In fact, Mr. O'Donnell stated how as a kid he was forbidden to play in this part of the city. Now he stated, it will only be a few more years before the full

potential of this area of the city is available for the recreational pursuits of our residents. Massachusetts Department of Environmental Protection Commissioner Martin Suuberg pledged his Department's support for the improvements envisioned for the Malden River. Commissioner Suuberg, gave special recognition to Thomas Philbin, Director of Communications for the City of Everett, who helped to arrange the event. Mr. Suuberg noted the past successes he has had working with Mr. Philbin. In addition to the warm and beautiful moonlight night, Everett provided the tent, the four piece Hillbilly Holiday Band, and tasty pastry treats

See MEETING, Page 10



Framework Plan



Framework Plan Design

Planning and Design Objectives

1. Design a safe, convenient and accessible path system (walking, running, biking) for local residents and visitors
2. Build an urban greenspace with thriving biodiversity
3. Promote a healthy lifestyle through active design and open space programming
4. Create a green open space network that provides a key link in a larger regional greenway system



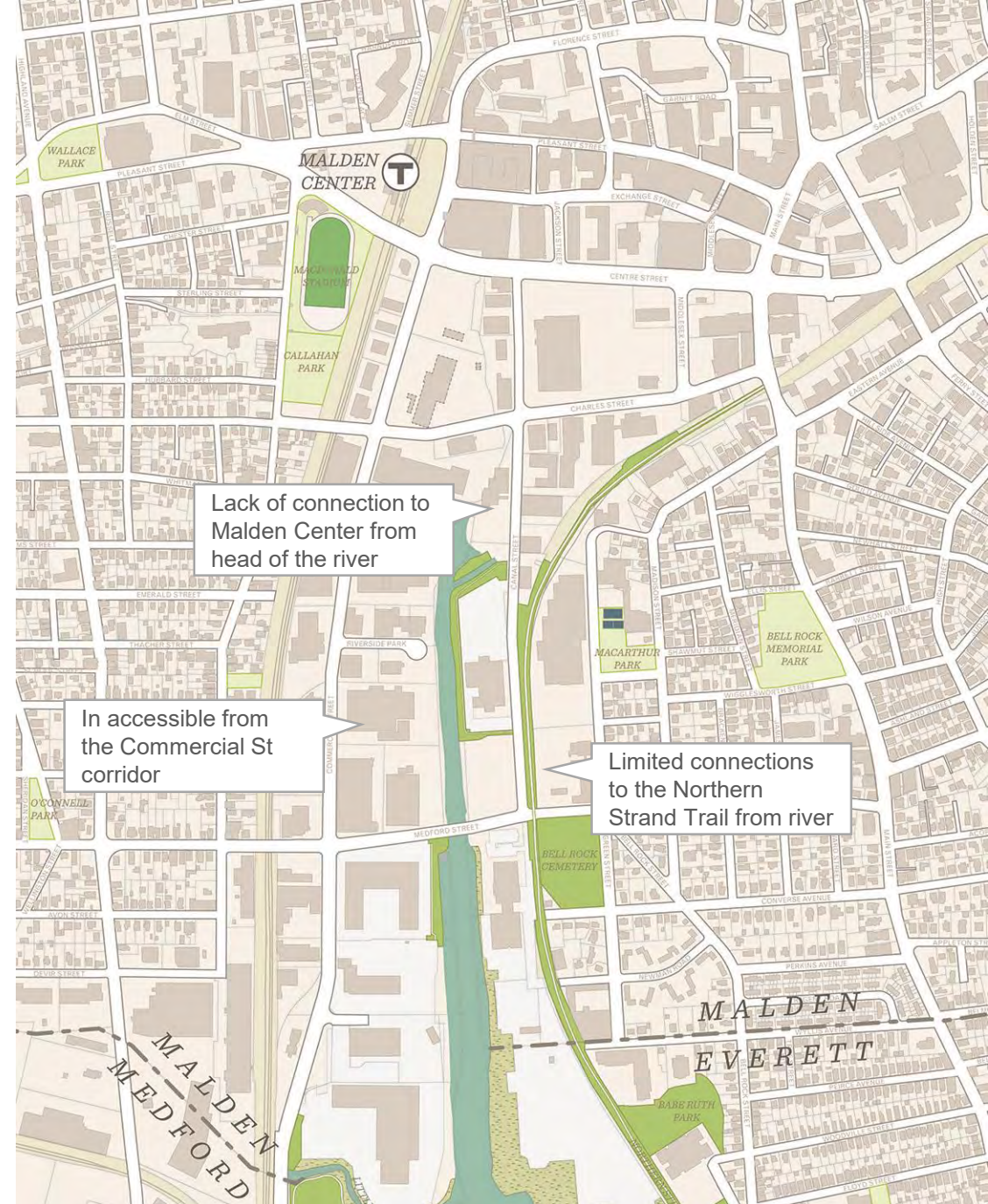
Malden Center to Little Creek



Malden Center to Little Creek

Existing Character

- Largely inaccessible to the public and preexisting paths are disconnected from one another.
- Existing path system is not up to reasonable standards for a multi-use path system.
- The hard edge condition contributes to excess stormwater runoff into the river
- Currently, it lacks connection to Malden Center and the Northern Strand Trail



Malden Center to Little Creek: Area Conditions



Parking lot at the edge of the river bank prohibits access



Looking south from Medford St



Trail ends abruptly at parking lot



Trail is narrow and not well maintained



Publicly Inaccessible riverfront

Malden Center to Little Creek

Future Character

- Harder tree lined edge with an “urban condition”
- Both a promenade and a pathway system



Lachine Canal, Montreal



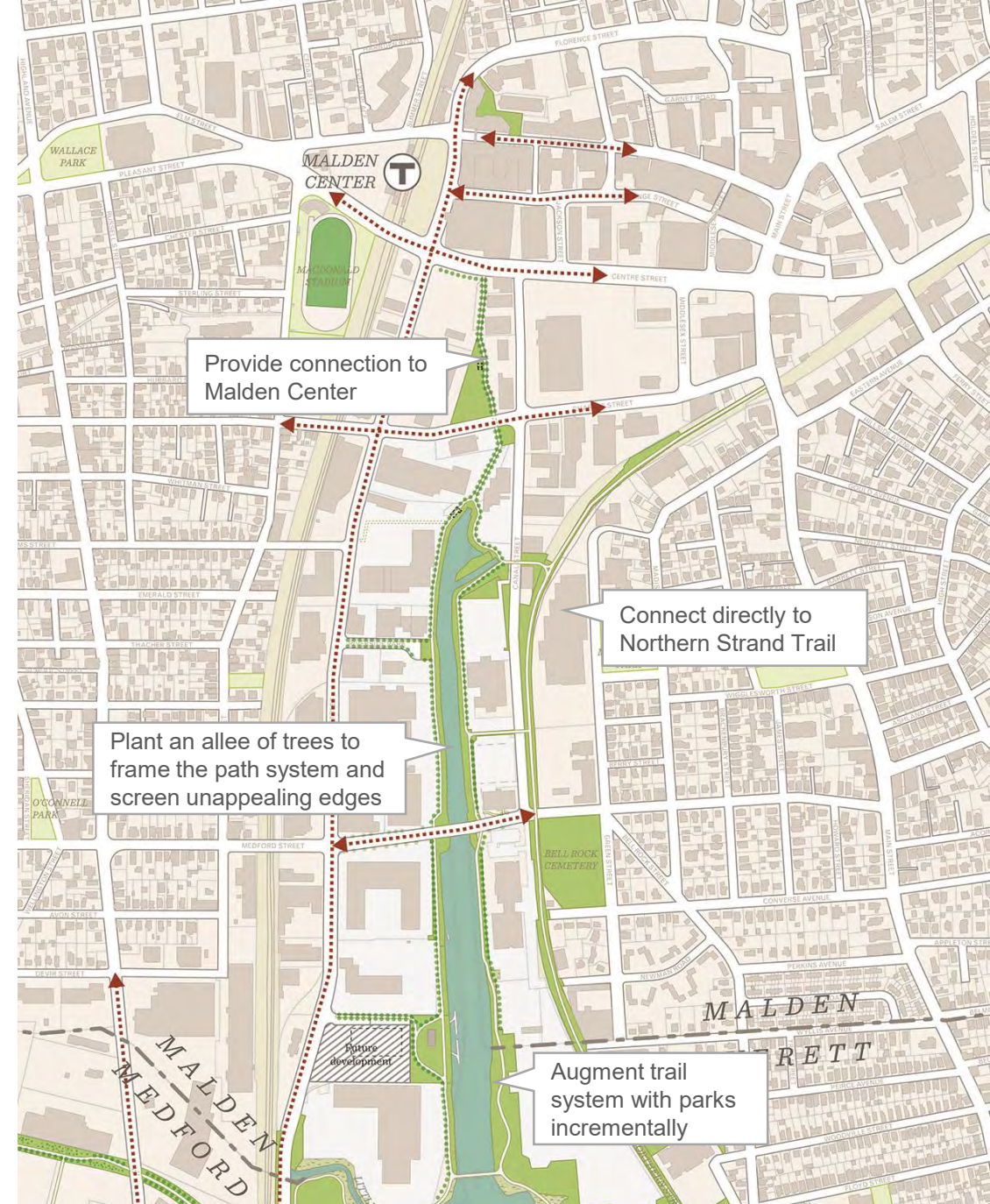
Ship Canal, Seattle



Damme Canal, Belgium



River Seine, Paris



Malden Center to Little Creek

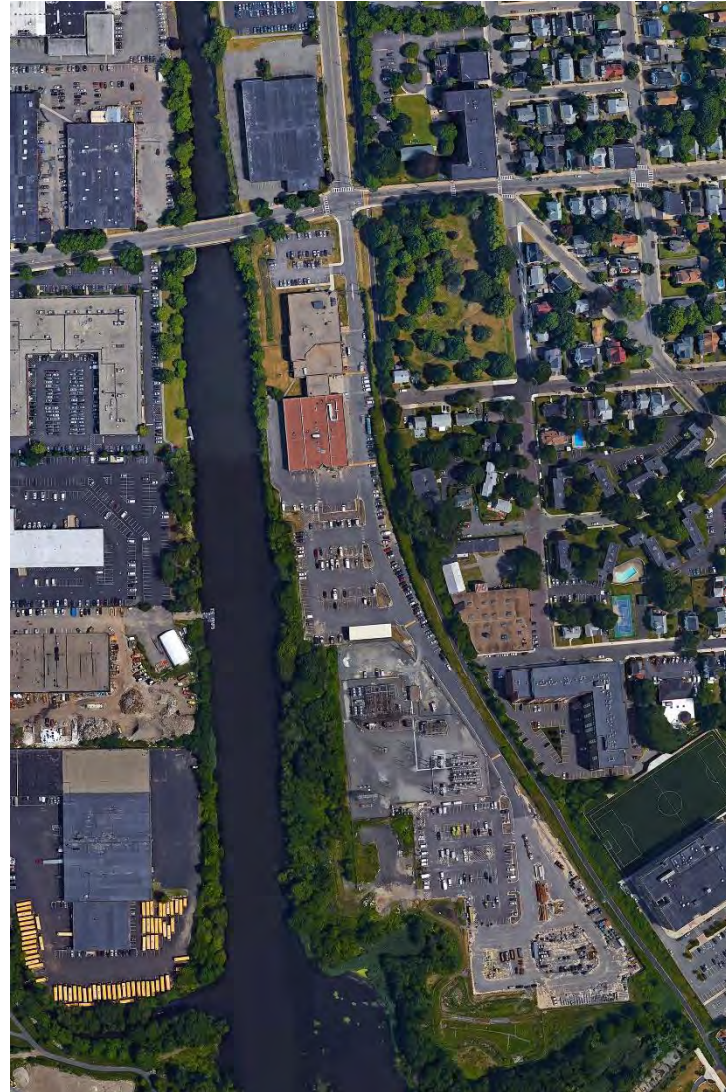


Malden Center to Little Creek

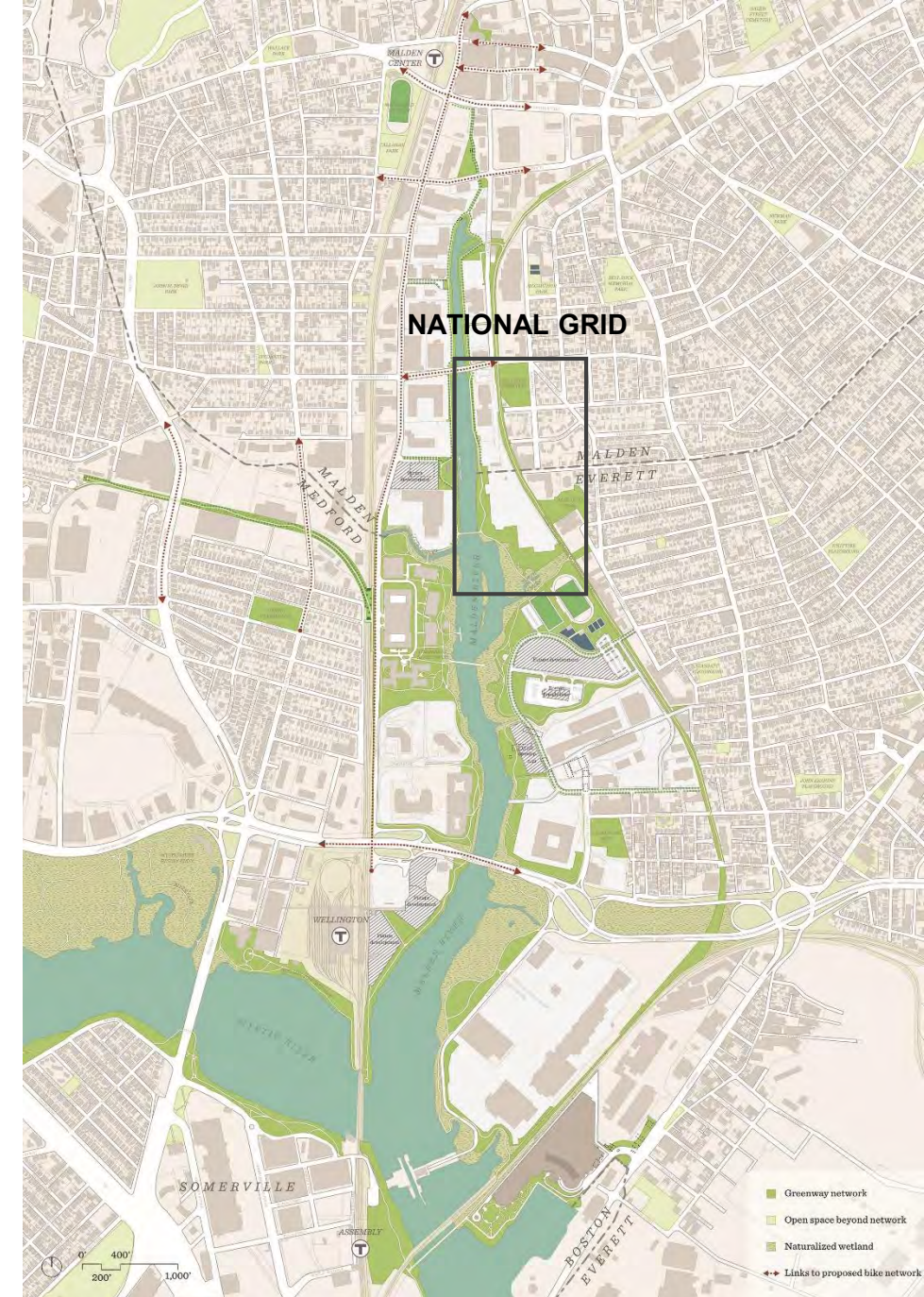


Project Opportunity: National Grid Site

- A combination of hard and natural shoreline conditions
- Direct access from Medford Street bridge and Northern Strand Trail
- Key missing link between Rivergreen and Malden River Walk north of Medford St



Aerial photo of National Grid site



National Grid Path: Existing Conditions

- At the northern end of the property the shoreline is adjacent to the National Grid facilities
- At the southern end, there is more distance between the facilities and the river, creating a naturalized condition paired with existing wetlands



National Grid property and fencing ends abruptly at the shoreline



Access to the river is blocked by security fencing that could be moved

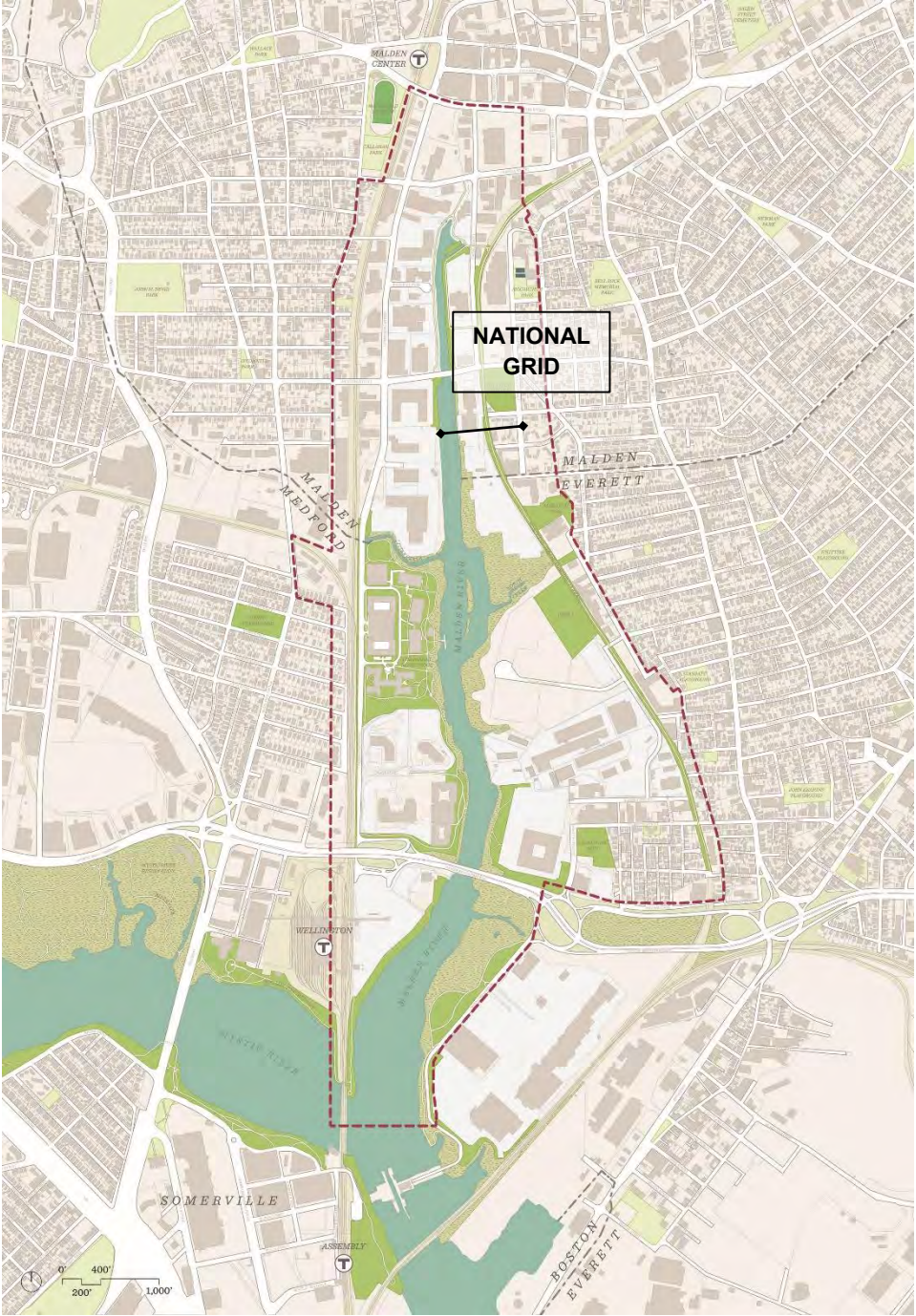
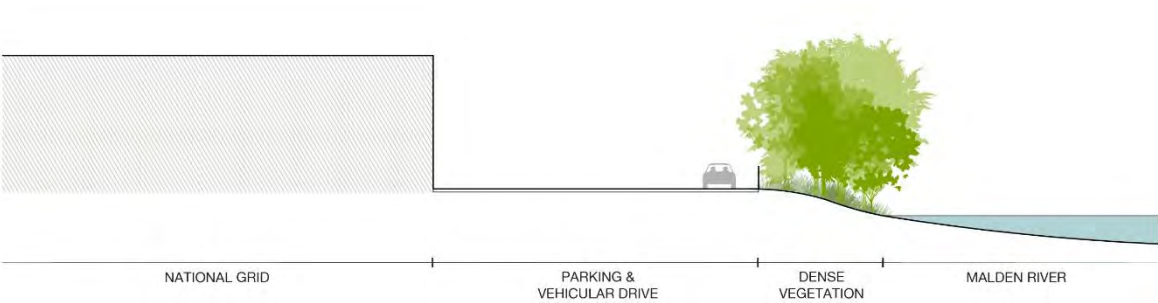


Wetland areas provide natural buffer between the shore and National Grid

National Grid Edge Conditions

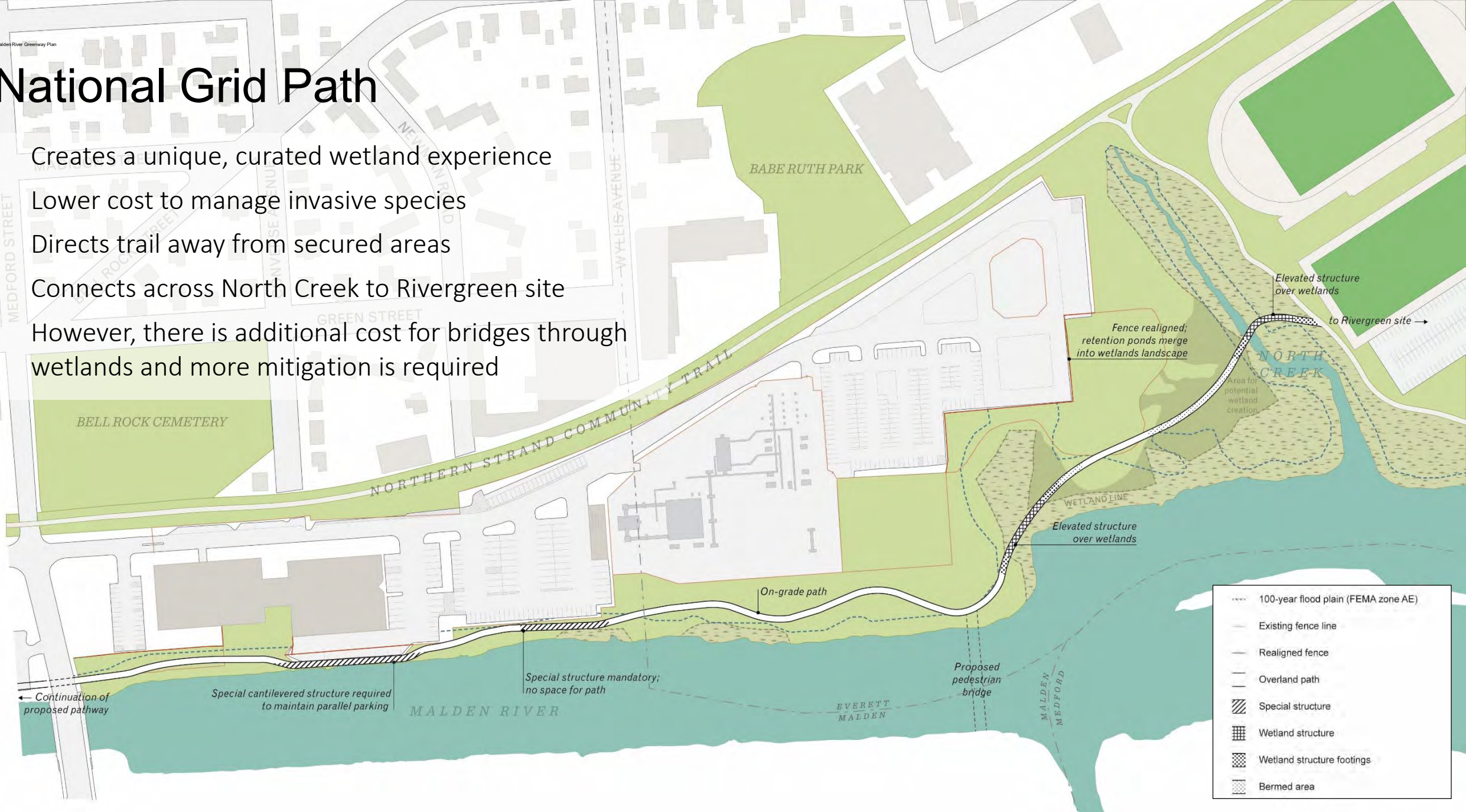


Inaccessible Riverfront with Dense Vegetation – National Grid



National Grid Path

- Creates a unique, curated wetland experience
- Lower cost to manage invasive species
- Directs trail away from secured areas
- Connects across North Creek to Rivergreen site
- However, there is additional cost for bridges through wetlands and more mitigation is required



	100-year flood plain (FEMA zone AE)
	Existing fence line
	Realigned fence
	Overland path
	Special structure
	Wetland structure
	Wetland structure footings
	Bermed area

Little Creek to Revere Parkway



Little Creek to Revere Pkwy

Existing Character

- The west side of the river from the Malden city line to Revere Beach Pkwy is complete or under construction
- The east side of the river in this area is largely underutilized and undeveloped
- The Rivergreen site will be redeveloped with future waterfront open space and new connections



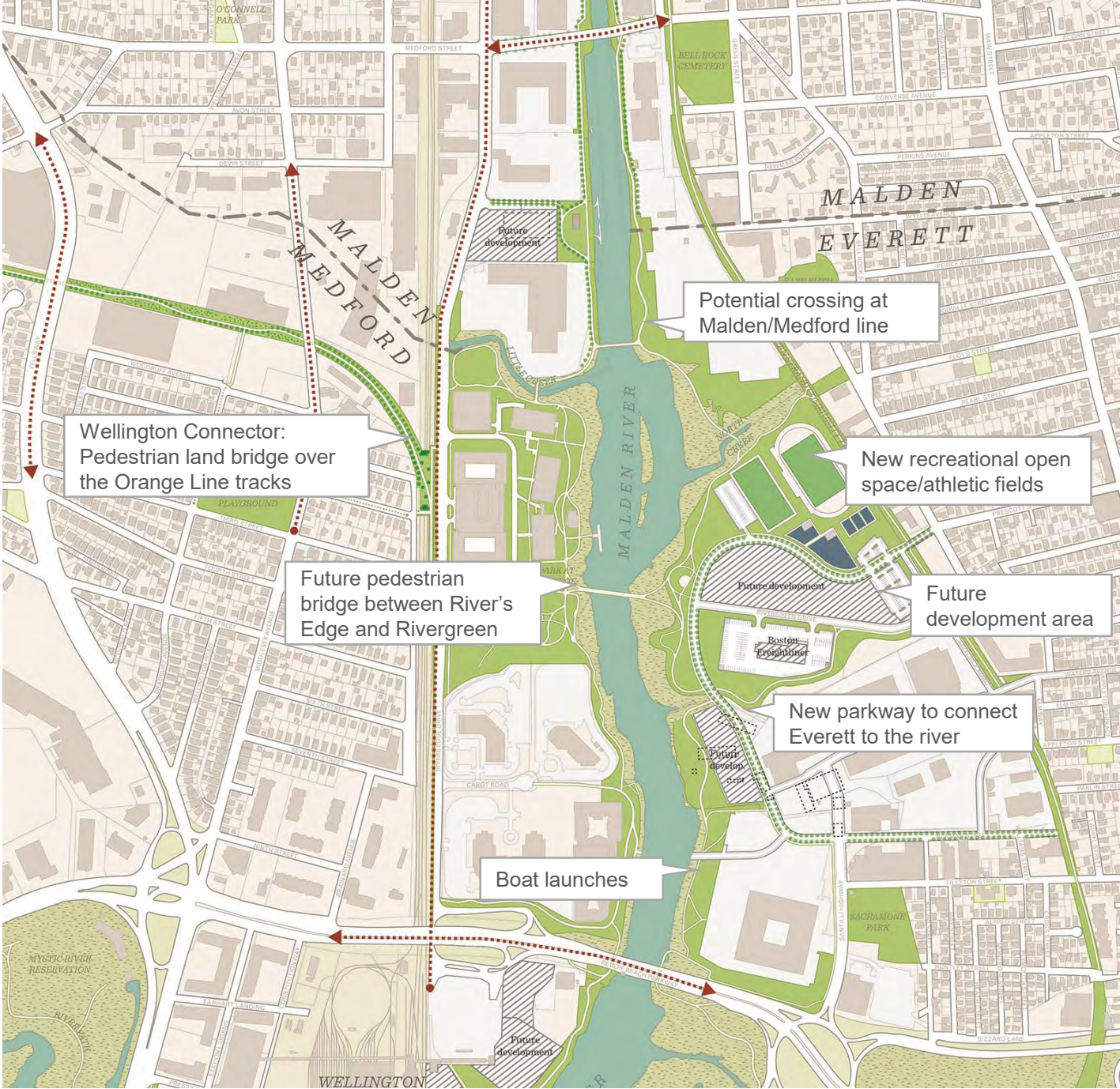
Little Creek to Revere Pkwy



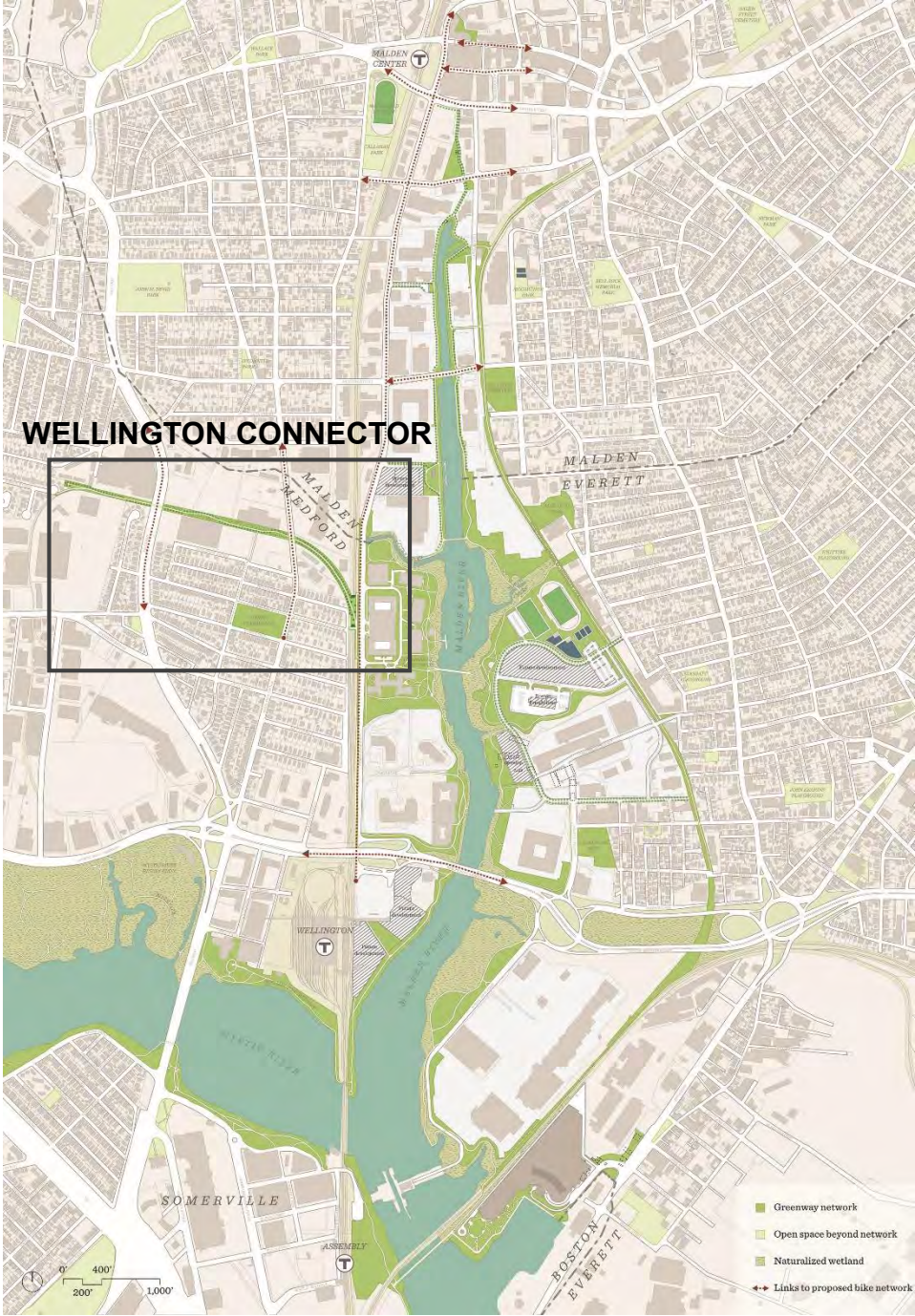
River's Edge, Medford



Little Rock, AR



Wellington Connector



Wellington Connector



Rail line looking north at platform



Rail spur capped over the MBTA line



Sound wall and future access to rail park

Wellington Connector: Neighborhood Context

- Provides a direct, green and off-street path to the river from Malden and Medford neighborhoods
- Opens access to the river that currently does not exist from Medford St to Revere Beach Pkwy
- Provides a new neighborhood open space and recreational path

Scale: 1" = 150'



Wellington Connector: Precedent Projects



Somerville Community Path: Somerville, MA (top and bottom)



The 606: Chicago, IL (top and bottom)



The Rail Park: Philadelphia, PA (top and bottom)

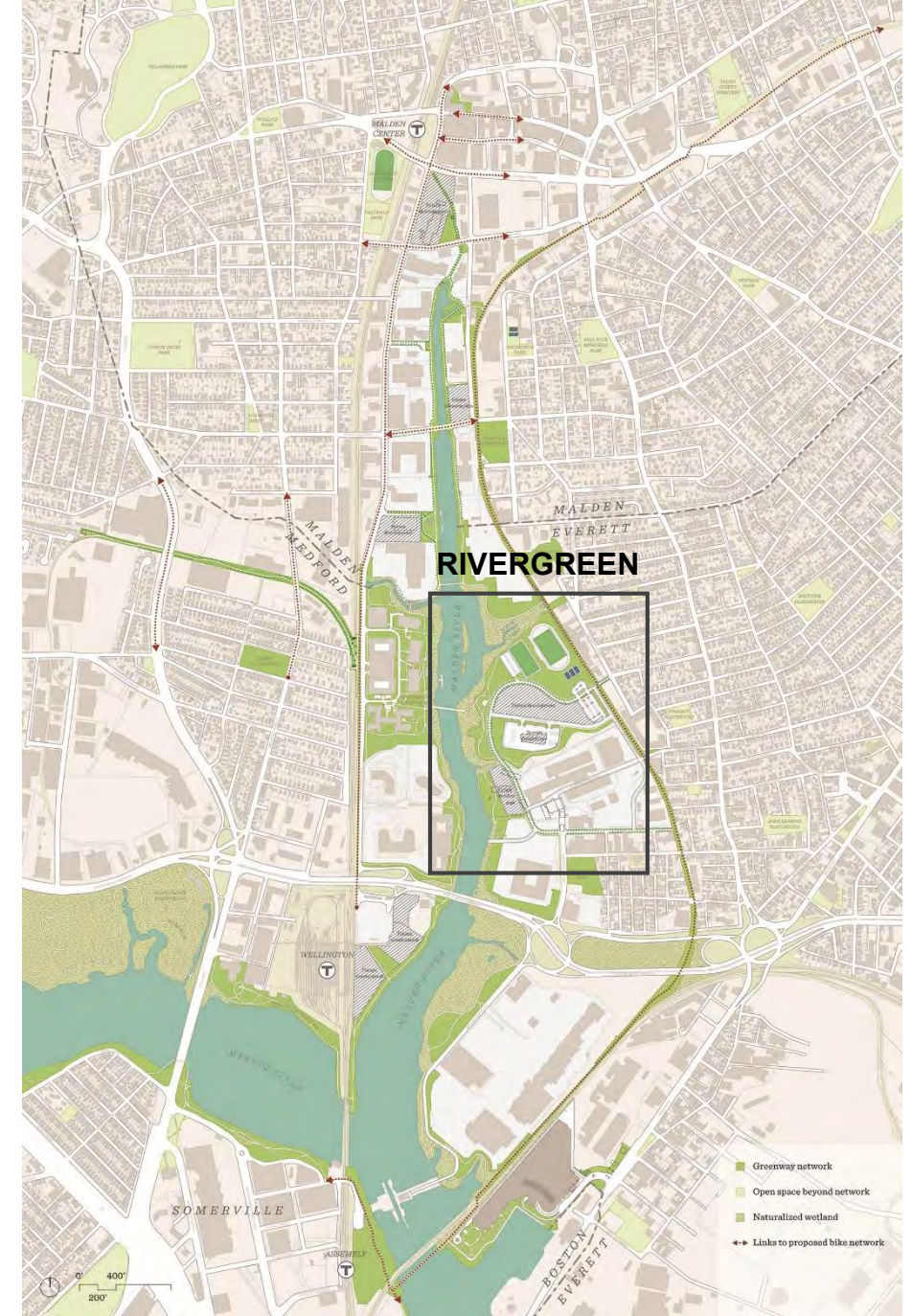


Wellington Connector: Neighborhood connections

- Convert Second Street and Bradbury Avenue to bike boulevards (slow neighborhood streets)
- Provides direct connections to Harris Playground along Second Street.
- Potential for additional access point through BJ's parking lot



Rivergreen



Rivergreen Site: Existing Conditions



Rivergreen existing conditions looking towards the river



Rivergreen – Current Riverwalk Site Plan

Rivergreen Parkway plan

- Almost 2,000 feet of public park frontage
- A connection to Prescott Street and extensions to Waters Avenue and Santilli Highway integrate the area into the existing street network
- Parkway meets the Northern Strand Trail at two locations
- Creates a park promenade with direct access to the Malden River
- Maintains developable area internal to the new riverfront drive.



Rivergreen: Local Riverfront Precedents



Memorial Drive at John Weeks Bridge – Cambridge, MA



Memorial Drive during River Festival – Cambridge, MA



Assembly Row Sylvester Baxter Riverfront Park – Somerville, MA



Magazine Beach – Cambridge, MA



The Esplanade Park – Boston, MA



Storrow Drive along The Esplanade – Boston, MA

Rivergreen to River's Edge Open Space Network



Rivergreen to River's Edge Open Space Network



The Malden River Basin



The Malden River Basin

Existing Character

- Broad open views towards a naturalized condition of wetlands on the east bank and an extended river trail on the west bank
- Gateway Center path feels disconnected from the rest of the river trail
- Wellington Greenway extension along the west bank should be a priority



Wellington Greenway at the Malden River



Recreational Opportunities



Recreational opportunities

Boat Club

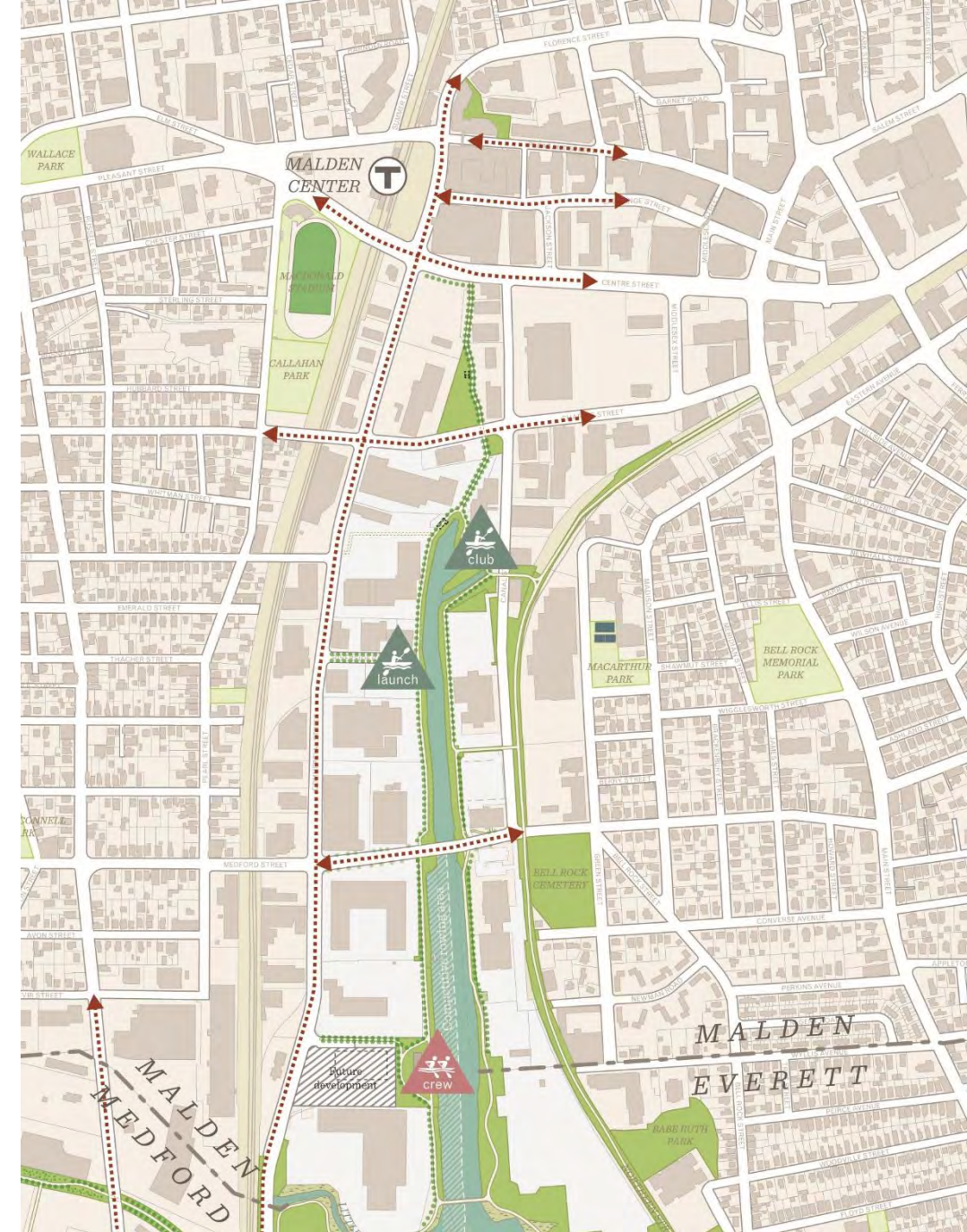
- Membership-style operation, people can store boats there, attracts more experienced boaters



Community Boat Club – Cambridge, MA



Malden High School Rowing



Recreational opportunities

Boat Rental

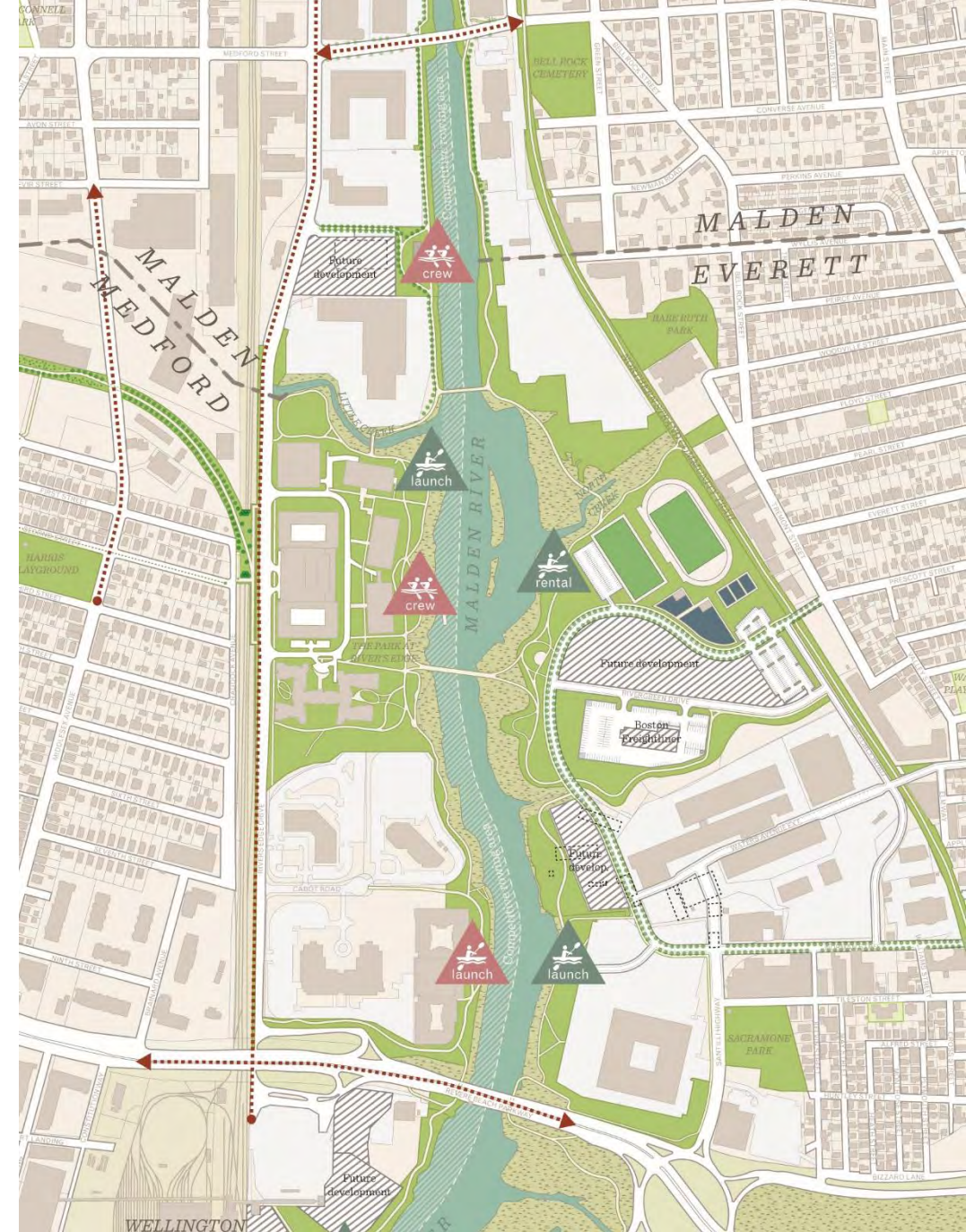
- Walk-in canoe/kayak rental, need good staging area for people to get in and out and avoid rowers

Boathouse

- Largest investment/space needed; can hold better boats than a typical rental space; can host other community activities



Tufts Boathouse – Medford, MA



Recreational opportunities

Boat Launch/Ramp (with parking)

- Ramp serves motor boats, needs space for trailers (motor not recommended unless at the mouth of the Malden)

Boat Launch/Ramp (no parking)

- Area for people to launch their own boats; needs the least infrastructure



www.mysticriver.org/maldenrivergreenway

mygreenway

MYSTIC RIVER WATERSHED ASSOCIATION

HOME

THE WATERSHED

THE WORK



GET INVOLVED

ABOUT US

NEWS

MALDEN RIVER GREENWAY

MyRWA is working to create a shared vision for a seamless waterfront park system along both sides of the Malden River, connecting communities in Medford, Malden and Everett to this important natural resource. Currently, a little more than 1 mile of the 3.5 miles of shoreline is accessible green space – this is a result of generations of industrial uses. Thanks to local leadership and several brownfield redevelopments, the Malden River is on its way to becoming a central open space amenity for all three cities.

Over the course of 2017, MyRWA will be partnering with cities, local developers/businesses, community groups and citizens to create a comprehensive vision that will support the implementation of vibrant and connected parklands along the river. Utilize the design consultant, will create a master plan and recommendations for new parks, paths, and amenities along the Malden River. The study will also explore the possibility of locating a public boathouse, docks and a pedestrian bridge across the river midway between the Medford Street bridge and the Route 16 bridge.

Join us for a **public workshop** on June 26 to learn more about the plan and to share your vision on the future of the Malden River.

Monday, June 26, 2017

7:00-8:30 pm

Malden Public Library

36 Salem St, Malden, MA



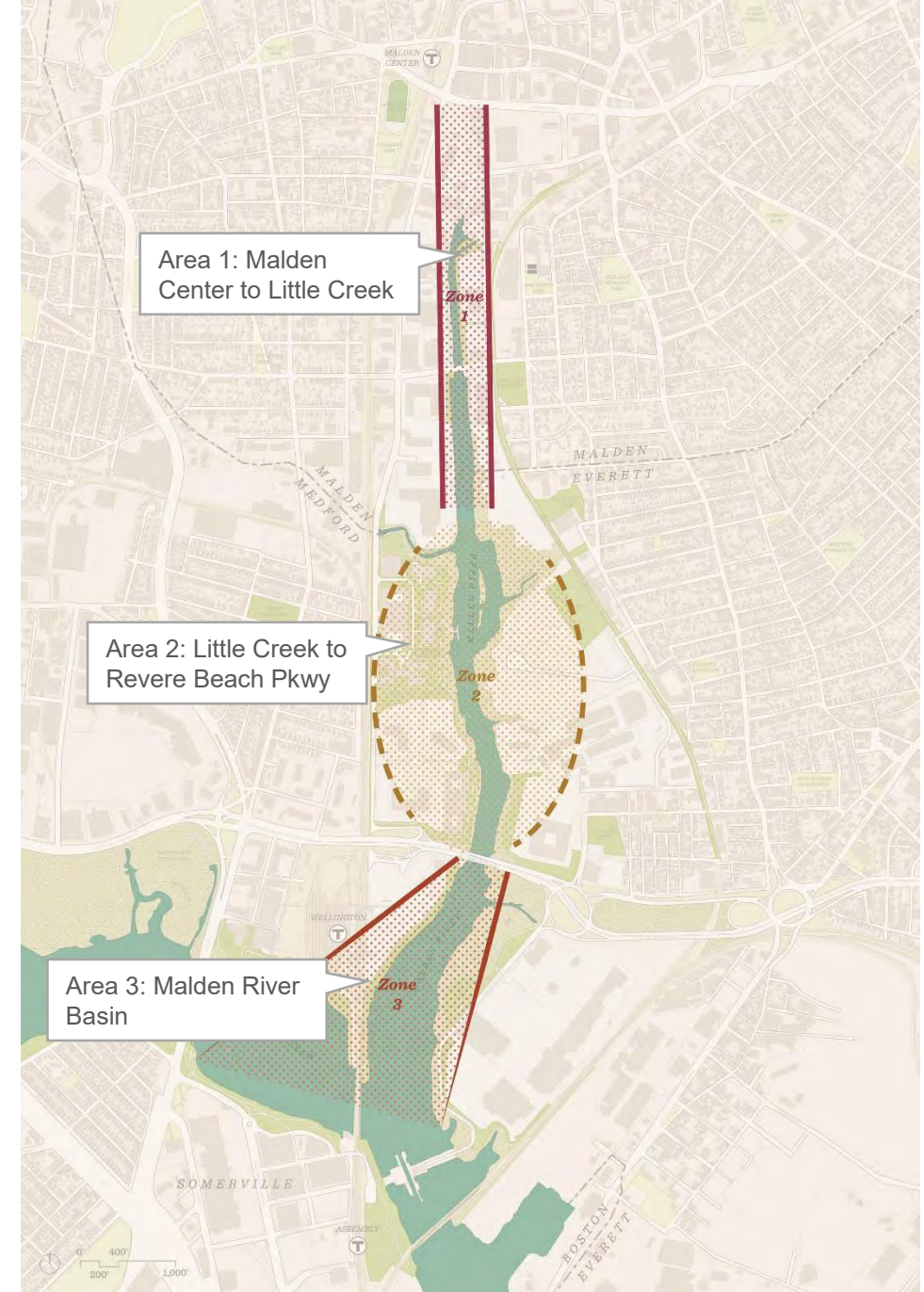
Next Steps

Malden Center to Little Creek: Chapter 91 (licensing and enforcement), design standards, DPW site/redevelopment

National Grid Site: Chapter 91 Advocacy

Wellington Connector: Feasibility study, PanAm research

Environmental: Clean-ups, sediment study and public outreach re: health risks



THANK YOU!

QUESTIONS?