



---

# HORN POND BROOK RESTORATION AND FISH PASSAGE





# HORN POND FISH PASSAGE



The City of Woburn is constructing a fish passageway at the Horn Pond Dam outlet\*. The fish passage will create a means for river herring (alewife and blueback herring) and American eel to migrate to and from Horn Pond via Horn Pond Brook.

\*WORK IS BEING FUNDED THROUGH NATURAL RESOURCE DAMAGES (NRD) FUNDING



# PROJECT COMPONENTS

---



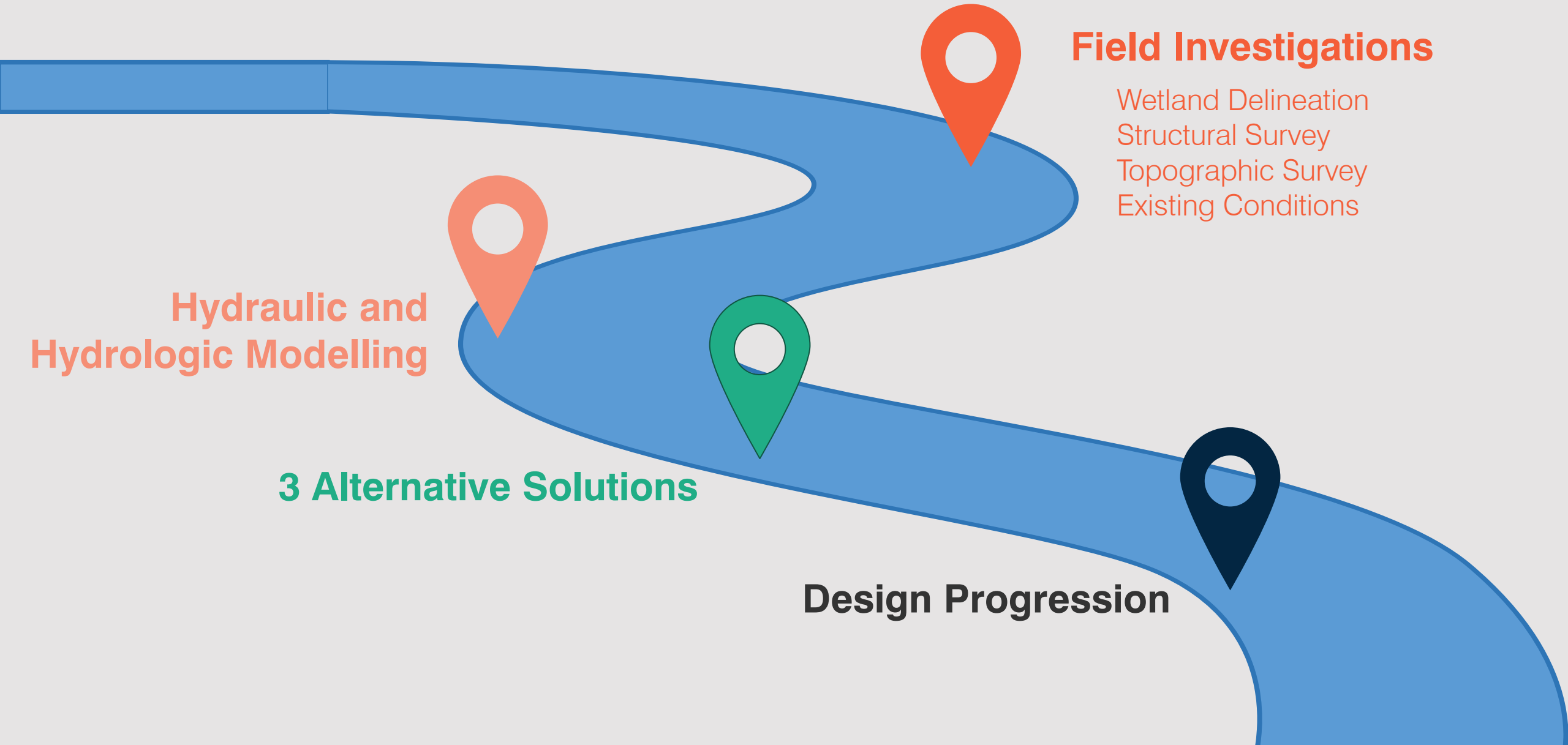
**STORMWATER  
FEATURE**



**BROOK RESTORATION AND  
FISH PASSAGE**

# PROJECT STATUS OVERVIEW

---



## Field Investigations

- Wetland Delineation
- Structural Survey
- Topographic Survey
- Existing Conditions

Hydraulic and  
Hydrologic Modelling

3 Alternative Solutions

Design Progression





# STORMWATER FEATURE

Capture and treat stormwater from parking

Reduce pollution





# HORN POND BROOK RESTORATION

Reduce flooding

Restore natural flow

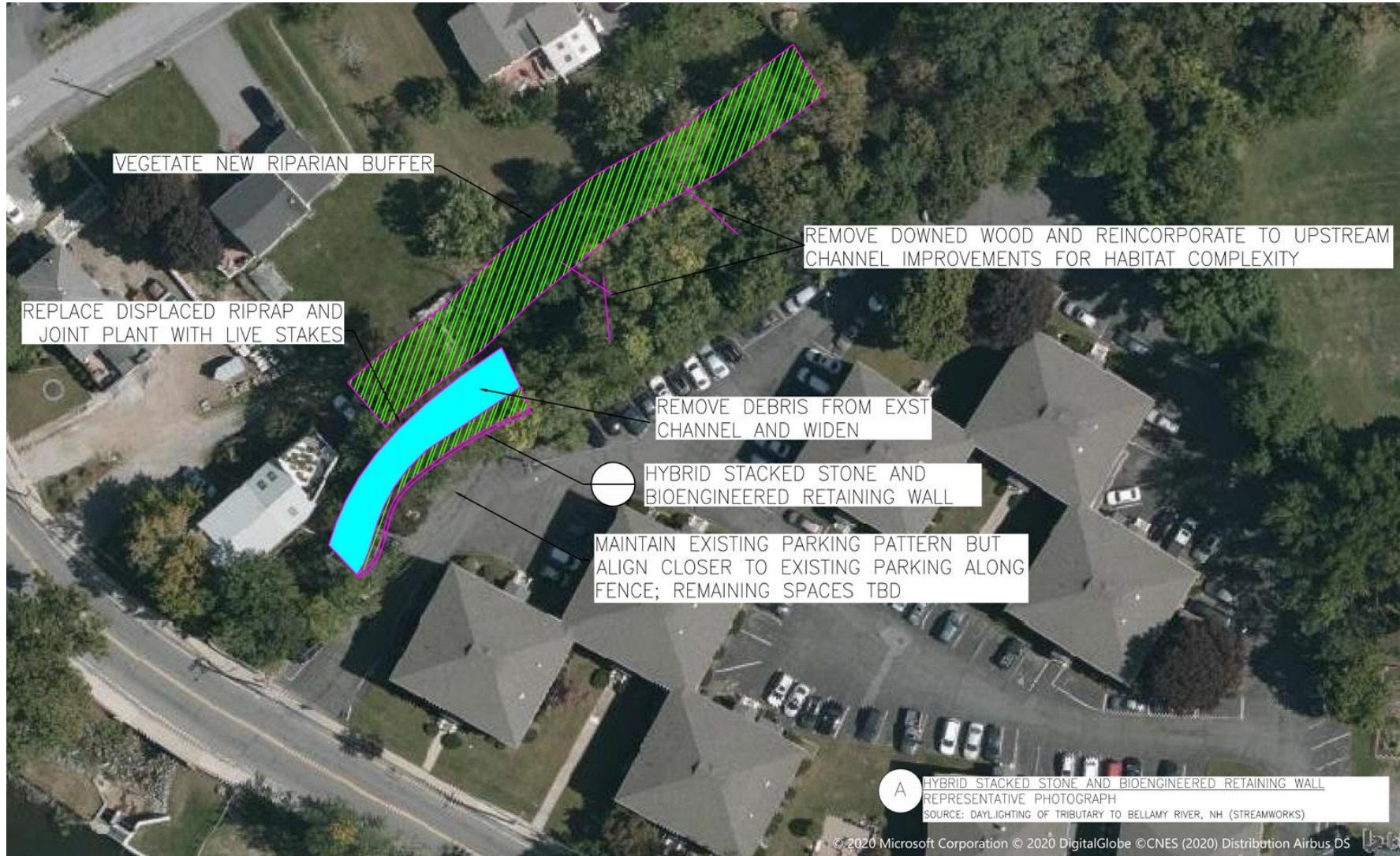
Enhance fish habitat







# HORN POND BROOK IMPROVEMENTS





# FISH PASSAGE



## What is fish passage?



Connects water bodies that were separated by obstructions such as dams, culverts, levees, and more



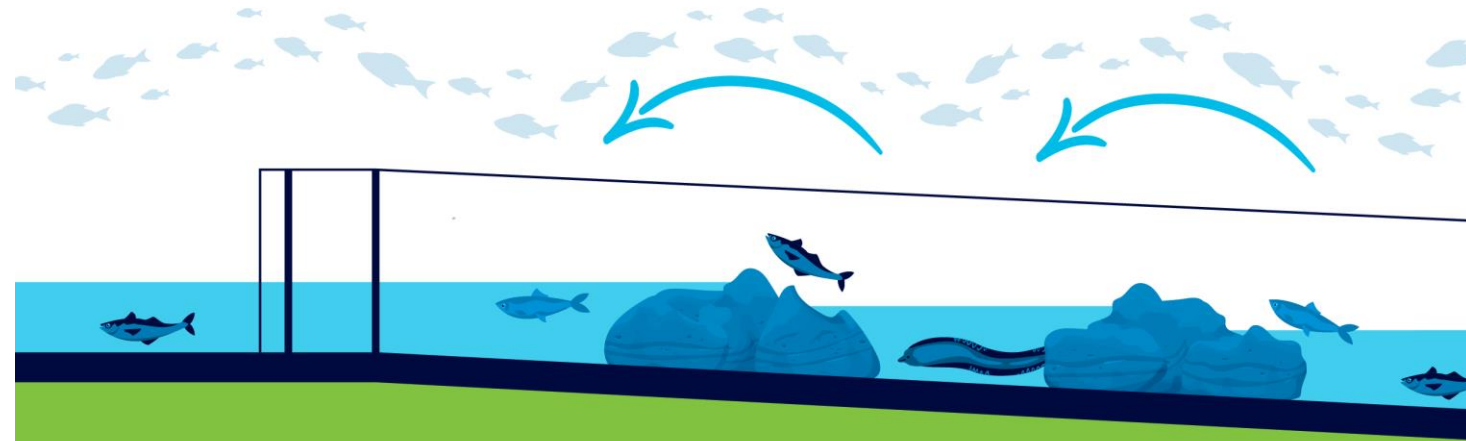
Facilitates access to habitats necessary to complete a life cycle, including spawning grounds and food sources



Provides safe passage for fish, eels, and other marine species



Can be used by ecologists to monitor the health of waterways and fish populations



## What are the benefits of fish passage?



Can be paired with outdoor recreation space and viewing areas



Can help prevent declining fish population levels, including for at-risk and listed species



Offers educational opportunities to learn about fish passage



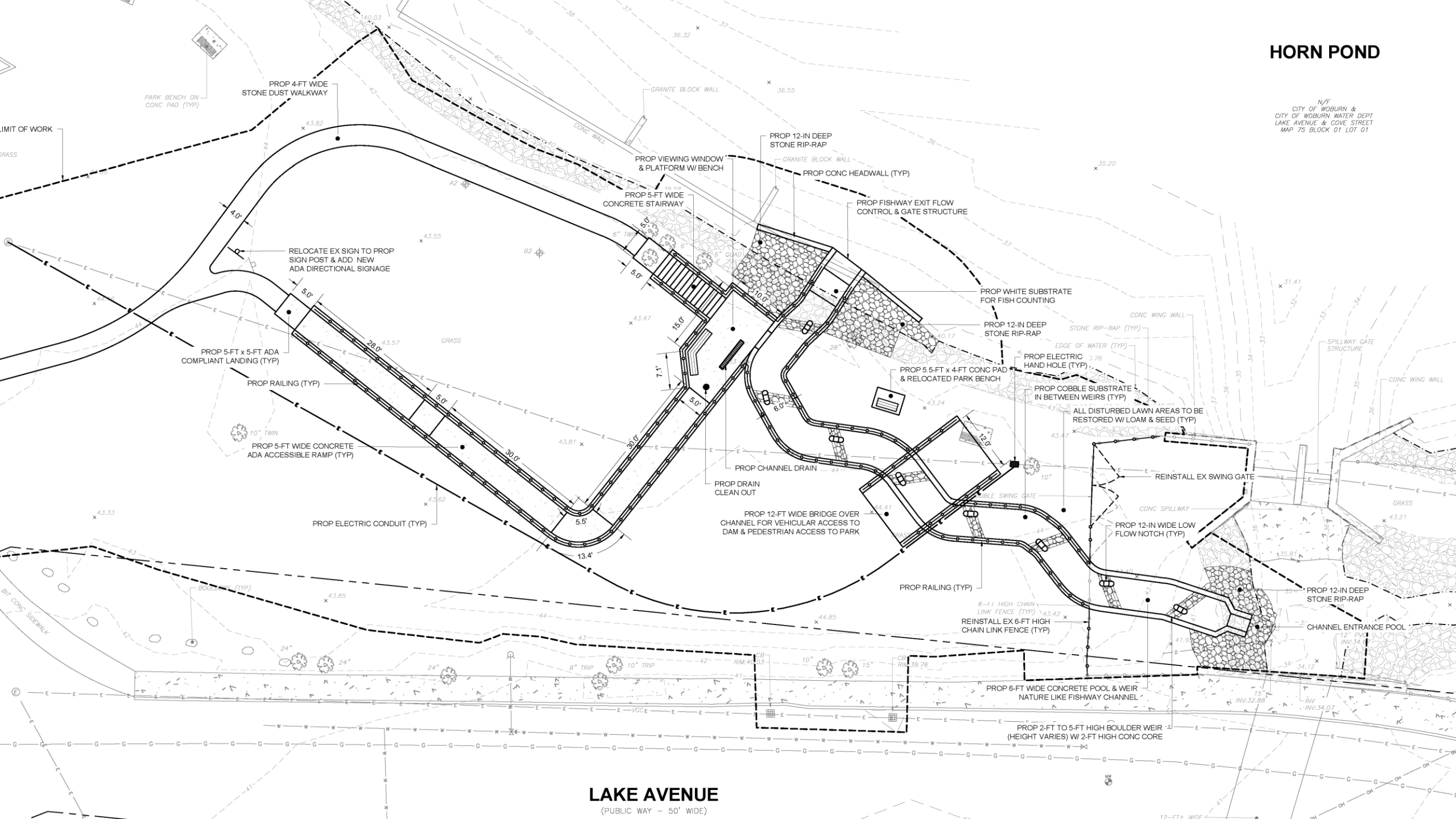
Removing barriers can improve public safety, climate resilience, and help restore river ecosystems

Source: U.S. Fish & Wildlife Service, "What is Fish Passage?" [fws.gov/story/what-fish-passage](https://www.fws.gov/story/what-fish-passage)



# HORN POND

N/F  
CITY OF WOBURN WATER DEPT  
LAKE AVENUE & COVE STREET  
MAP 75 BLOCK 01 LOT 01



## LAKE AVENUE

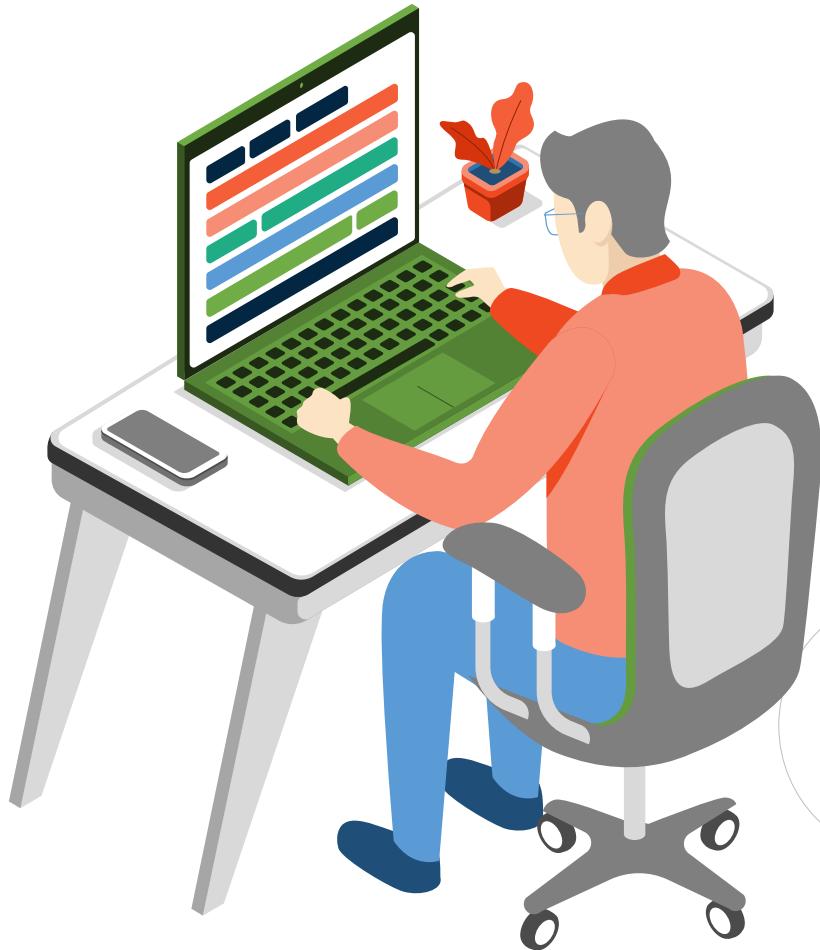
(PUBLIC WAY - 50' WIDE)





# NEXT STEPS

---



**FINALIZE DESIGN**

**SUBMIT PERMIT APPLICATIONS**

**CONSTRUCTION**

**STAY CONNECTED**

- Check website for updates
- Submit questions and comments





# THANK YOU



Weston & Sampson<sup>SM</sup>

