



# Hurd Park – Climate Resilient Hub

## City of Woburn, MA

February 15, 2023



# Welcome

## Agenda :

- Introduction and Project Background
- Community Engagement to Date
- Earlier Concept Design
- Design Ideas

# Project Team

## City of Woburn

- Scott Galvin, *Mayor*
- Jay Corey, *City Engineer*
- Jeff Dillon, *Ward 3 Alderman*
- Rory Lindstrom, *Recreation Director*
- Brian Nagle, *Assistant Recreation Director*

## Horsley Witten Group

- Jennifer Relstab, PE, *Project Manager, Senior Water Resources Engineer*
- Ellen Biegert, *Landscape Architect*

## Mystic River Watershed Assoc.

- Daria Clark, *Engagement Manager*
- Catherine Pedemonti, *Project Manager*

# Meeting Format

- Stay on mute to reduce background noise.
- We will take questions at the end of the presentation.
- Use “Raise Hand” tool when you want to speak or enter your question or comment in the chat.



# 21 communities. One watershed.

We partner on climate challenges no  
single municipality can solve alone





*Alewife Stormwater Wetland, the original inspiration*

## Resilient Mystic Collaborative

### Upper Mystic Working Group

*Overall goal: Manage precipitation-based flooding*

1. Modeling to better understand flooding
2. Identify tools to manage regional flooding
3. Zoom in on constructed wetlands as tool to manage regional flooding
4. Identify potential sites. 425 sites narrowed to 6.
5. Design and permit top 3 sites

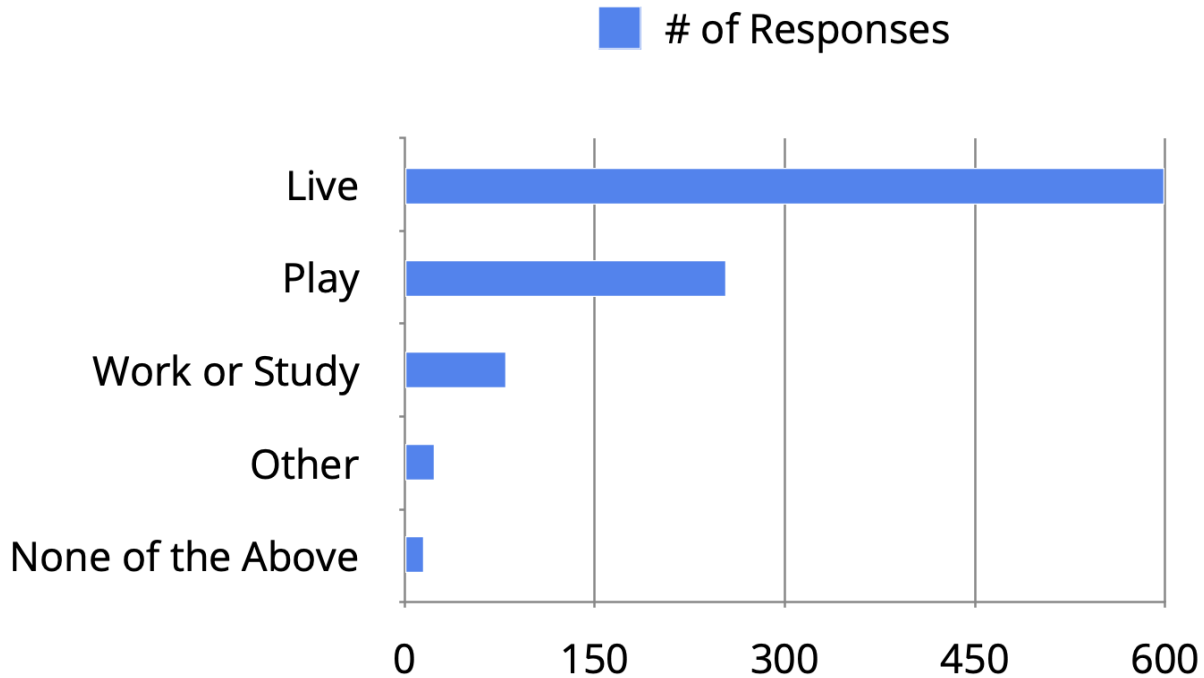
## Community Engagement to date

- Lunch and Learn (Spring 2021)
- Public Meeting (Spring 2021)
- Conservation Commission (Spring 2021)
- Survey (2021 to present, over 700 responses)
- Public Meeting #1 (Feb 2023)
- Public Meeting #2 (March 2023)



COMMUNITY  
ENGAGEMENT TO  
DATE

# Do you live, work, or play near Hurd Park? (Check all that apply.)

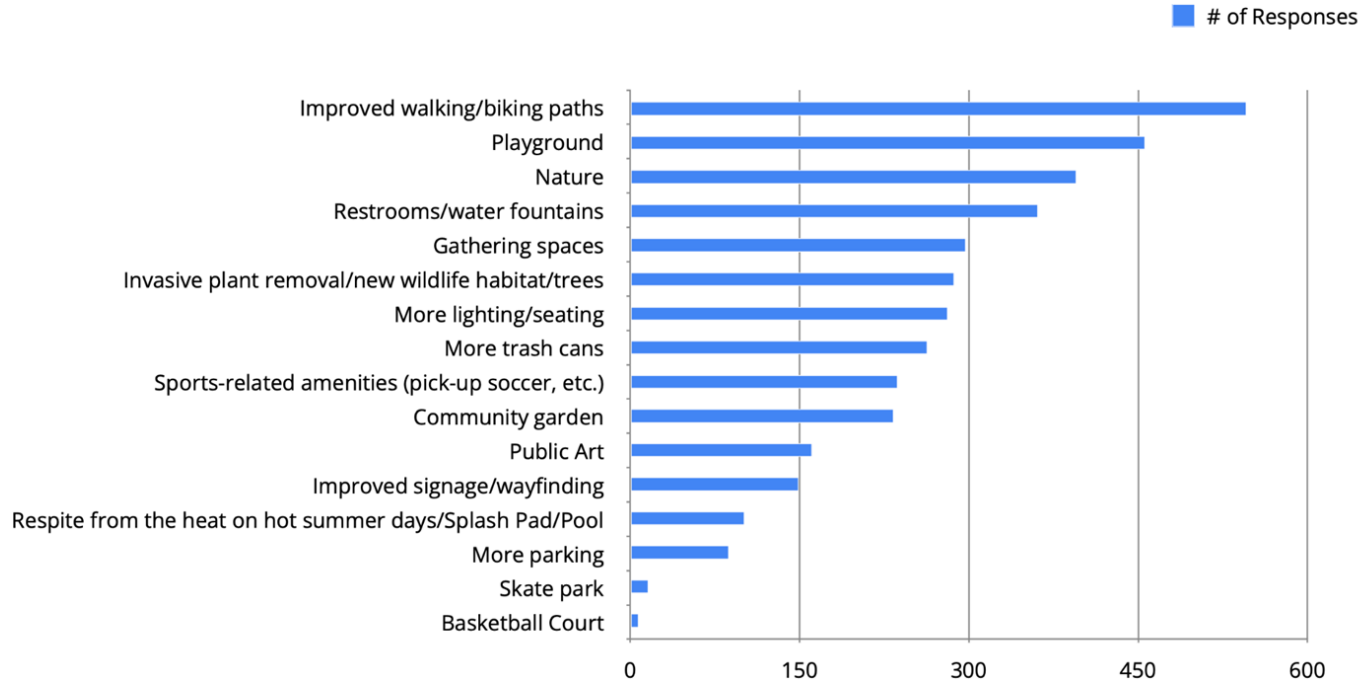




# How do you use the area? (Check all that apply.)

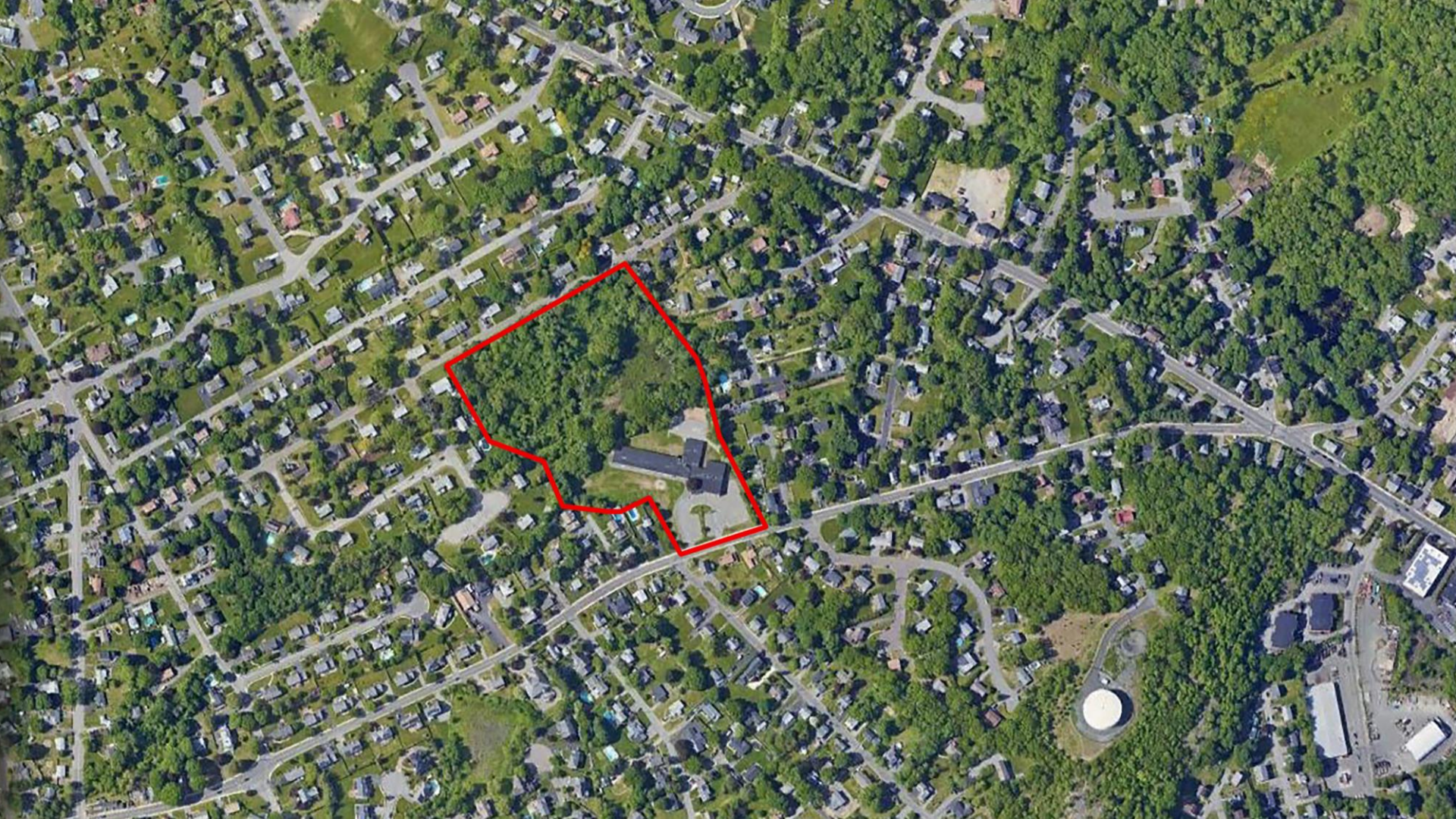


# What would you like to see in the park?



## When you think of Hurd Park what words or phrases come to mind?





# Aerial



# Site Photos



# Location

## OVERLOOK PARK

- TRAILS
- PLAYGROUND
- BASKETBALL

CHILD CARE / SCHOOL

WINN STREET

1/2 MILE RADIUS:  
APPROX 10 MIN. WALK

## HURLD PARK

BEDFORD ROAD

WILLOW STREET

## RAG ROCK HILL PARK

- TRAILS

## PUBLIC LIBRARY

- RESTROOMS
- BASKETBALL
- BASEBALL
- TENNIS

## GONSALVES PARK

BASEBALL

## JOYCE MIDDLE SCHOOL

- SOCCER FIELDS
- OPEN GREEN
- ICE RINK

## HORN POND RECREATION AREA

- TRAILS
- PLAYGROUND
- OPEN GREEN
- WATER ACCESS
- COMMUNITY GARDEN

BUS

BUS

BUS

BUS

BUS

BUS

# Project Design Priorities

- Create a space that is accessible for people of all ages, abilities and diverse backgrounds.
- Design a climate resilient park that will provide heat resilience and manage stormwater through nature-based solutions.
- Provide active and passive landscapes for visitors to promote public health and community well-being.



# Previous Concept (2021)



# Key Amenities



Pavilion



Active Open Space



Inclusive Play Area



Sports Court



Walking Paths



Heat Resilient Features



Parking



# Pavilion



# Active Open Space



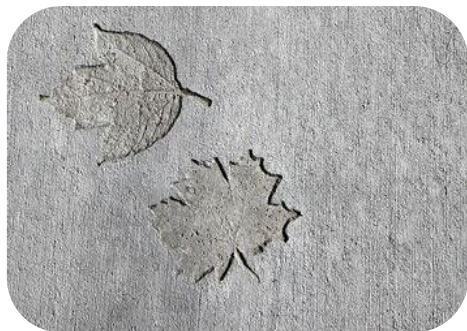
# Inclusive Play Area



# Sport Court



# Walking Paths



# Heat Resilient Features





# Parking



# Site Layout Considerations

## "City Park"

- Formal Layout
- Larger Playground
- More Open Lawn
- Extended Sidewalks
- Larger Parking Area

## "Nature Park"

- Meandering Layout
- Smaller Playground
- More Meadows and Trees
- Extended Pedestrian Paths
- Smaller Parking Area with Increased Tree Canopy

# "City Park"



HEAT RESILIENT FEATURES

ACTIVE OPEN SPACE



WALKING PATHS



PAVILION



INCLUSIVE PLAY AREA



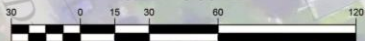
SPORT COURT



PARKING



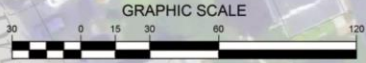
GRAPHIC SCALE



# "Nature Park"



HEAT RESILIENT FEATURES



ACTIVE OPEN SPACE



WALKING PATHS



PAVILION



PARKING



INCLUSIVE PLAY AREA



SPORT COURT



# Project Timeline



# Next Steps

- Join us at the next public meeting!

Thursday, March 9, 2023 at 6pm (Virtual Meeting)

- Fill out our survey!
- Find out more about the project!

<https://www.woburnma.gov/government/recreation/hurld-park-vision/>

# More Information at:

<https://www.woburnma.gov/government/recreation/hurld-park-vision/>

Hurld Park

# Thank you!