



Hurd Park Climate Resilient Hub - Design Updates

City of Woburn, MA

March 9, 2023



Welcome

Agenda :

- Update on Community Engagement
- Previous Concept Designs – “City” and “Nature” Parks
- Final Concept
- Next Steps

Project Team

City of Woburn

- Scott Galvin, *Mayor*
- Jay Corey, *City Engineer*
- Jeff Dillon, *Ward 3 Alderman*
- Rory Lindstrom, *Recreation Director*
- Brian Nagle, *Assistant Recreation Director*

Horsley Witten Group

- Jennifer Relstab, PE, *Project Manager, Senior Water Resources Engineer*
- Ellen Biegert, *Landscape Architect*

Mystic River Watershed Assoc.

- Daria Clark, *Engagement Manager*
- Catherine Pedemonti, *Project Manager*

Meeting Format

- Stay on mute to reduce background noise.
- We will take questions at the end of the presentation.
- Use “Raise Hand” tool when you want to speak or enter your question or comment in the chat.



RESILIENT
MYSTIC
COLLABORATIVE

21 communities. One watershed.

We partner on climate challenges no
single municipality can solve alone



REGIONAL
CONTEXT

Through Resilient Mystic
Collaborative



MVP
Municipal Vulnerability
Preparedness

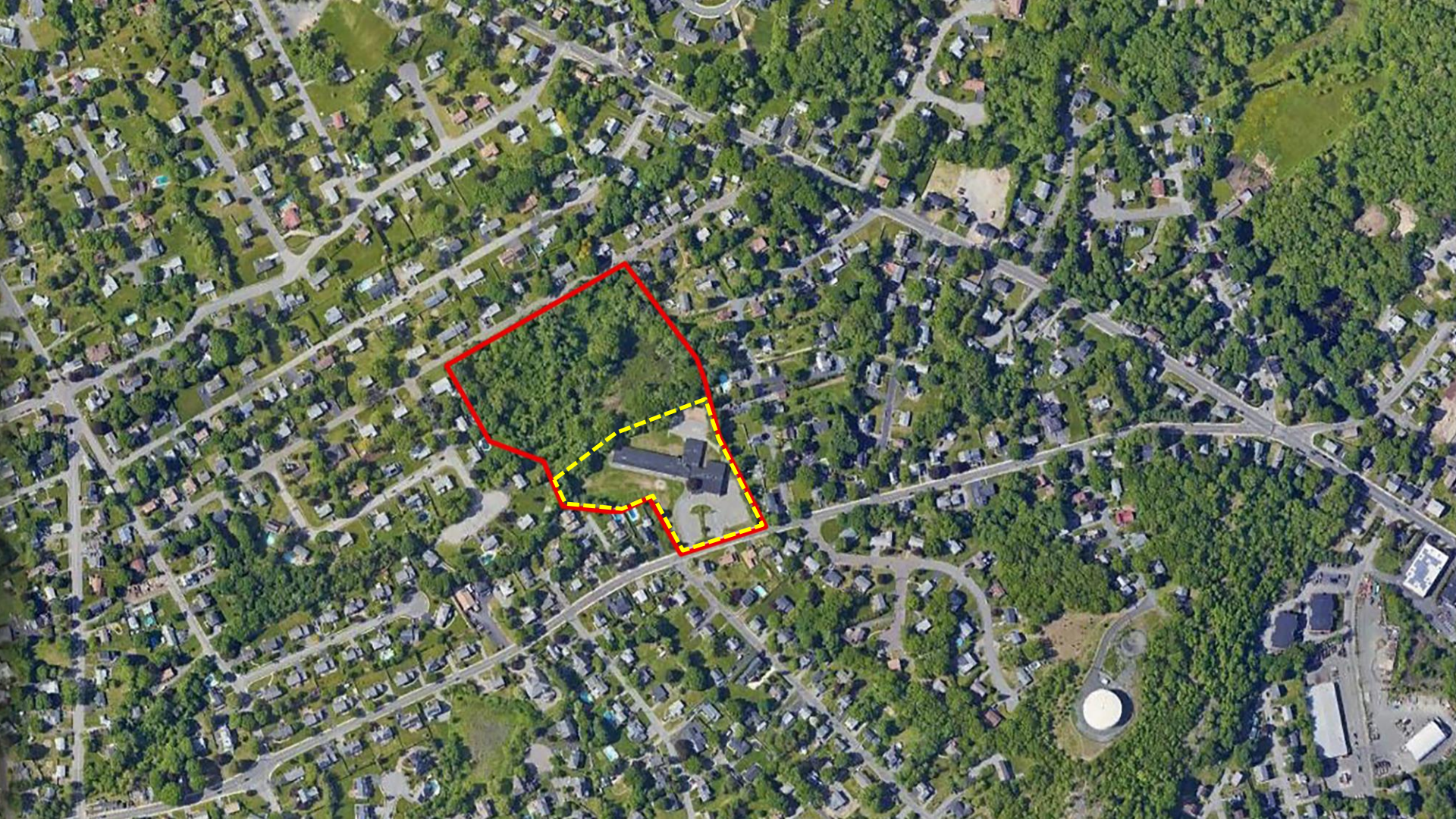
Mystic River
WATERSHED ASSOCIATION

Community Engagement to date

- Lunch and Learn (Spring 2021)
- Public Meeting (Spring 2021)
- Conservation Commission (Spring 2021)
- Survey (2021 to present, over 700 responses)
- Public Meeting #1 (Feb 2023)



COMMUNITY
ENGAGEMENT TO
DATE



Project Design Priorities

- Create a space that is accessible for people of all ages, abilities and diverse backgrounds.
- Design a climate resilient park that will provide heat resilience and manage stormwater through nature-based solutions.
- Provide active and passive landscapes for visitors to promote public health and community well-being.

2021 Concept

Key Amenities



Pavilion



Active Open Space



Inclusive Play Area



Sports Court



Walking Paths



Heat Resilient Features



Parking



Updated Concepts (2023)

"City" Park



"Nature" Park





Pavilion

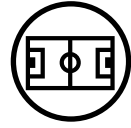


Parking





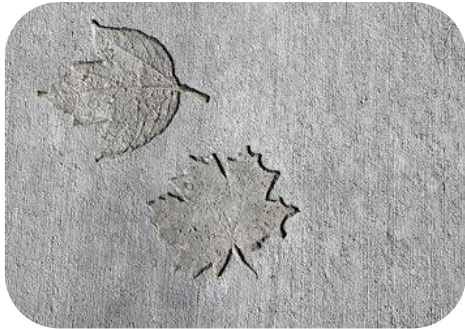
Active Open Space



Sport Court



Walking Paths





Inclusive Play Area





Heat Resilient - Water





Heat Resilient - Shade



Final Concept



HEAT RESILIENT FEATURES



INCLUSIVE PLAY AREA

ACTIVE OPEN SPACE



WALKING PATHS



PAVILION



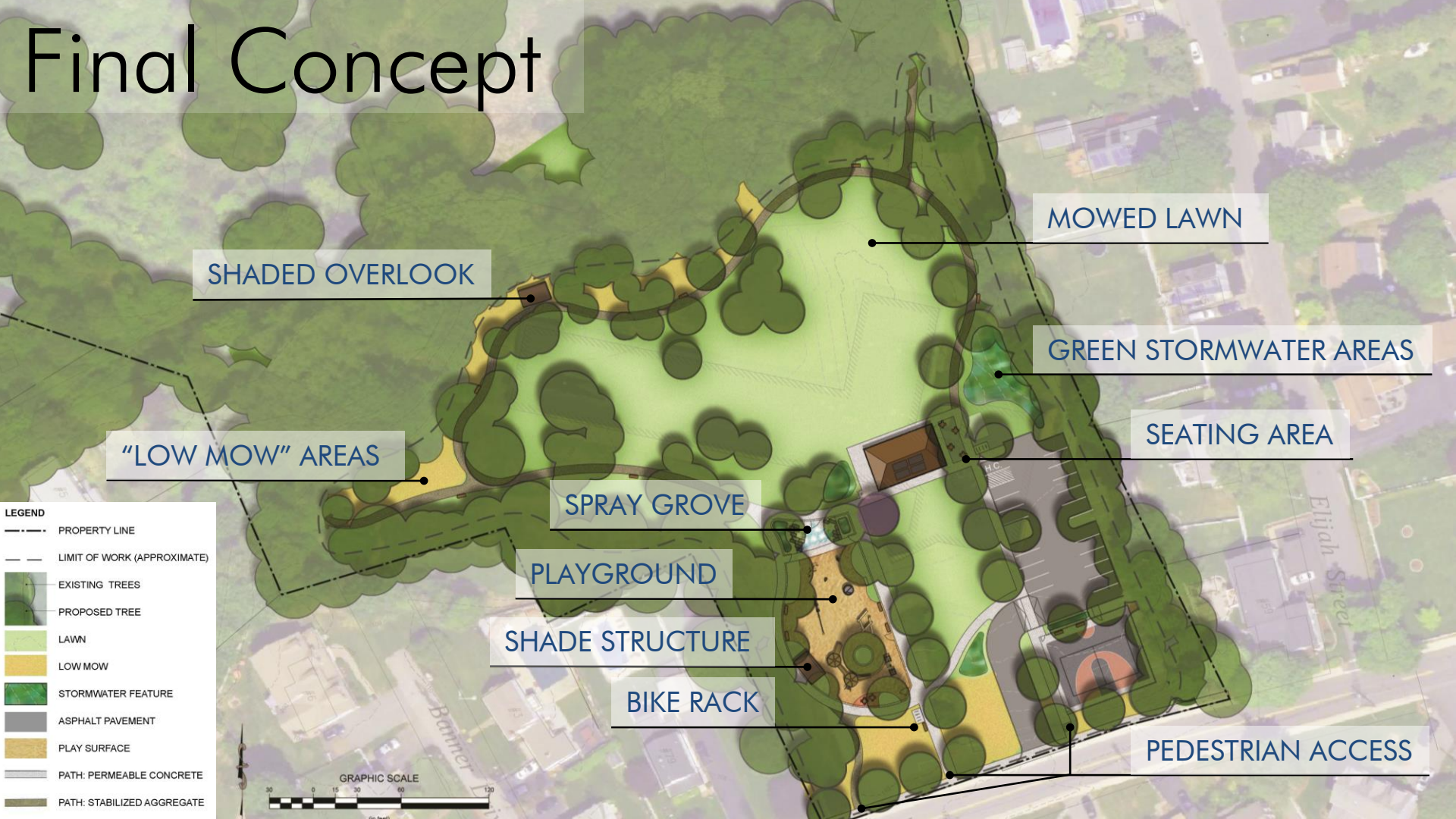
PARKING



SPORT COURT



Final Concept



SHADED OVERLOOK

MOWED LAWN

GREEN STORMWATER AREAS

SEATING AREA

"LOW MOW" AREAS

SPRAY GROVE

PLAYGROUND

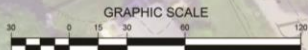
SHADE STRUCTURE

BIKE RACK

PEDESTRIAN ACCESS

LEGEND

- PROPERTY LINE
- LIMIT OF WORK (APPROXIMATE)
- EXISTING TREES
- PROPOSED TREE
- LAWN
- LOW MOW
- STORMWATER FEATURE
- ASPHALT PAVEMENT
- PLAY SURFACE
- PATH: PERMEABLE CONCRETE
- PATH: STABILIZED AGGREGATE





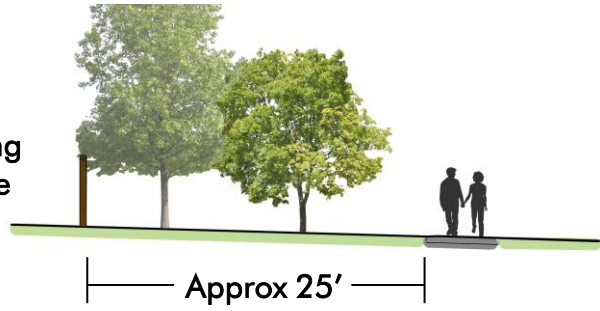
Inclusive Play Area



Clapp Park Play Area
+ Splash Pad
Approx 4,700 SF

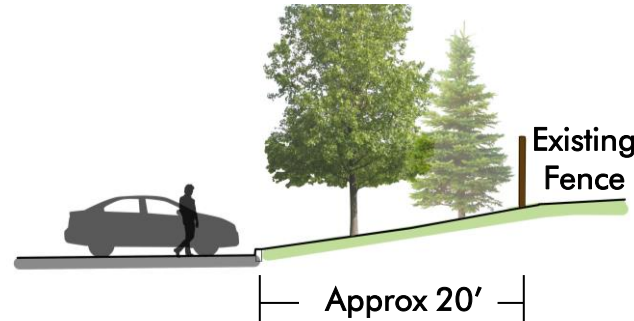


Existing
Fence



Approx 25'

Existing
Fence



Approx 20'



Project Timeline



Next Steps

- Find out more:

<https://www.woburnma.gov/government/recreation/hurld-park-vision/>

- Stay tuned for updates!

More Information at:

<https://www.woburnma.gov/government/recreation/hurld-park-vision/>



Thank you!